

GOVERNMENT CORNER RESTORATION FORM

Township 29S Range 6W Sec. 28

County DOUGLAS

Date: 2/8/96 By: BC

This survey consists of:

State OR Date 2-5-96 No. _____

Map: _____

Narrative: _____

Corner Rpt: CS CA/66

Corner Designation

SSE
COR OLC
45

DOUGLAS COUNTY
SURVEYOR

- Condition Reported
- Not Found
- Renewed
- Unrecorded
- Surveyed In
- Referenced Out

PI# 045040

Previous Renewals 1915 CAIN, 1924 COLE, 1971 POWELL

Monument(s) Found: (Condition and Source)

2 1/2" BRASS CAP ON A 1 1/2" O.D
IRON PIPE PROTRUDES 14"
ABOVE GROUND

MONUMENT DETAIL

COUNTY SURVEYORS OFFICE
T 29S R 6W
O.L.C.
45
S. W. COR.
1971

Accessories Found:

14" NOW 24" DIA MAPLE WITH AN UNHEALED
ROTTED BLAZE NO MARKS VISIBLE, BEARS
S 20°W, 5.3 FT (AGREES WITH REC) 1915 CAIN

16" NOW 32" DIA MAPLE WITH A FULLY HEALED
BLAZE, BEARS N 72°W, 47.5 FT (AGREES
WITH REC) 1915 CAIN

10" NOW 13" DIA 1 FT HIGH ROTTING CEDAR STUMP
WITH SCRIBING VISIBLE "BT" BEARS S 7°W
58.6 FT (AGREES WITH REC) 1971 POWELL

RENEWAL

Monument Detail

Monument Set (Procedure and Description)

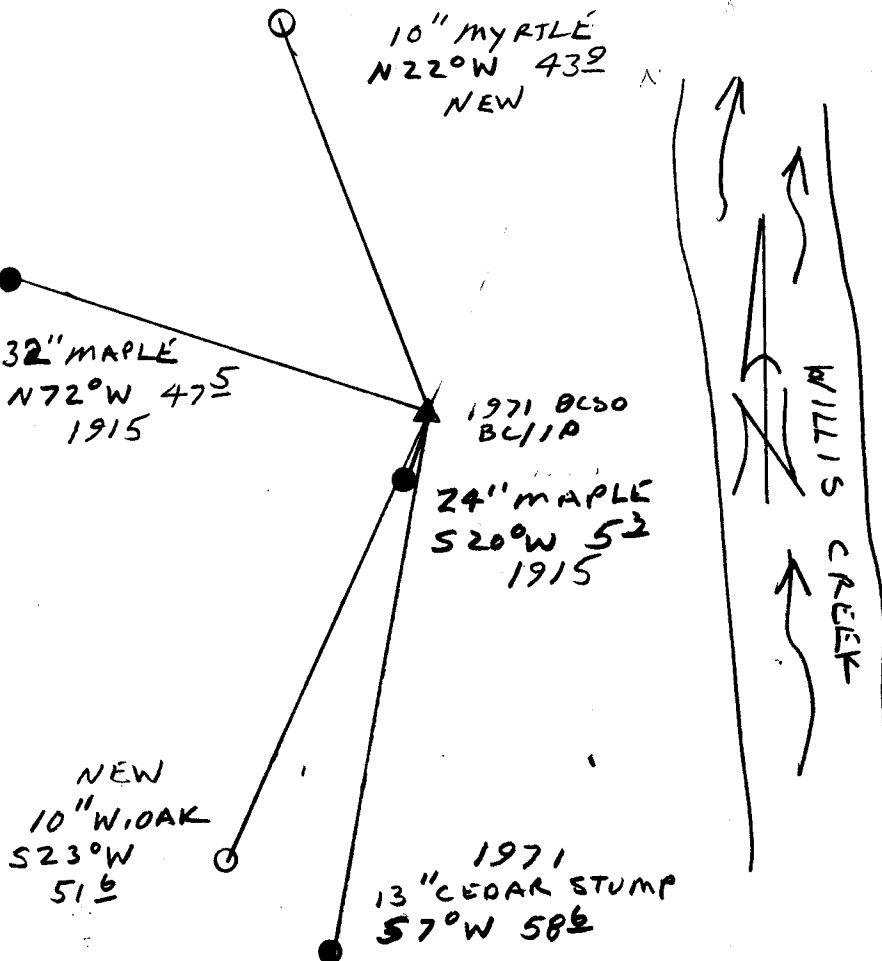
THE "W" OF S.W. IS OBLITERATED AND AN "SE" IS STAMPED. THIS WAS DONE TO CORRECT ERRANT CORNER MARKS OF 1971 RENEWAL

COUNTY SURVEYORS OFFICE
T 29 S R 6 W
D.L.C.
45
S S. E. COR.
1981

New Accessories

DOUBLE TRUNKED MYRTLE, DOUBLE BLAZED AND SCRIBED "SSE DLC 45 CS BT" ON 10" DIA S'ly TRUNK, ROOT CROWN BEARS N 22° W, 43.2 FT
10" DIA W. OAK DOUBLE BLAZED AND SCRIBED "SSE DLC 45 CS BT" BEARS S 23° W 51.6'

Sketch of Monument, Accessories, and General Area



Location & Comments

Comp. Declin. 17 3/4° E
Agency DCSD
Party Chief RANDALL W SMITH
Notekeeper Randall W Smith
Witnesses STEPHEN J FLAUSK

Address

Surveyor's Seal
REGISTERED PROFESSIONAL LAND SURVEYOR
Randall W Smith
EXPIRES 6-30-96
OREGON
JULY 25, 1990
RANDALL W. SMITH
2469