

GOVERNMENT CORNER RESTORATION FORM

FILED

Township 29S Range 4W Sec. 24

County DOUGLAS

Date 2/6/96 By PC

State OR

Date 2-1-96

No. _____

This survey consists of:

Maj: _____

Narrative: _____

Corr Rpt: 62 04/667

Corner Designation

SW COR
DLC 37

- Condition DOUGLAS COUNTY
- Not Found SURVEYOR
- Renewed
- Unrecorded
- Surveyed In
- Referenced Out

Previous Renewals M1-33, #149

Monument(s) Found: (Condition and Source)

2 1/2" DIA BRASS CAP ON 1 1/2" O.D.
IRON PIPE PROTRUDING 18" ABOVE
GROUND (REN#149)

MONUMENT DETAIL

COUNTY SURVEYORS OFFICE
T 29S R 4W

DLC 37
1960

Accessories Found:

18" NOW 56" DIA. O. ASH WITH A PREVIOUSLY OPENED
BLAZE, ILLGIBLE SCRIBING VISIBLE, BEARS N 5° E
82.5 FT (AGREES WITH RECORD) OBT

14" NOW 22" DIA. O. ASH WITH A FULLY HEALED
DOUBLE BLAZE, BEARS N 59° E, 19.8
(AGREES WITH RECORD) REN 149

9" NOW 16" DIA. O. ASH WITH A PARTIALLY HEALED
DOUBLE BLAZE, ILLGIBLE SCRIBING VISIBLE
BEARS N 38° W, 20.3 FT (AGREES WITH RECORD)
REN 149

2" I.P. 6" BELOW GROUND, BEARS S 87 3/4° E
132.0 FT (RECORD EAST 132.0 FT) M 1-33

Monument Set (Procedure and Description)

Monument Detail

N/A

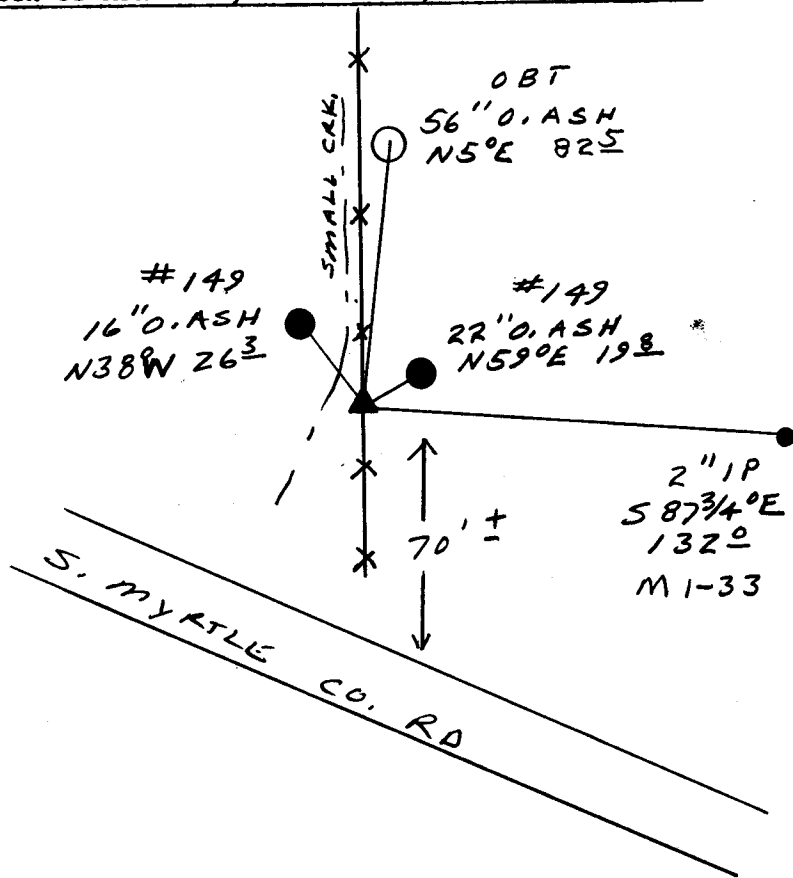
BASE OF 1961 BC/IP IS
SURROUNDED BY A 2 1/2" DIA
MOUND OF STONE

N/A

New Accessories

N/A

Sketch of Monument, Accessories, and General Area



Location & Comments

CORNER LIES APPROX
70 FT NORTH OF
S. MYRTLE COUNTY ROAD
IN A N-S FENCE LINE

Comp. Declin. $17\frac{3}{4}^{\circ}E$
Agency DCSO
Party Chief RANDALL W SMITH
Notekeeper RANDALL W SMITH
Witnesses STEPHEN J FLEISS

Address

Surveyor's Seal

REGISTERED
PROFESSIONAL
LAND SURVEYOR

Randall W Smith
EXPIRES 6-30-96

OREGON
JULY 25, 1980
RANDALL W. SMITH
2489