

GOVERNMENT CORNER RESTORATION FORM

Date: 12/19/95 By: BC

Township 28S Range 2W Sec. 9 County DOUGLAS

This survey consists of:

State OR Date 11-20-95 No. _____

Map: _____

Narrative: _____

Corner Rpt: CS 64/64-8

Corner Designation

S 9 | S 10
S 16 | S 15

DOUGLAS COUNTY

- Condition Survey Only
- Not Found
- Renewed
- Unrecorded
- Surveyed In
- Referenced Out

Previous Renewals # 30, # 37

MONUMENT DETAIL

Monument(s) Found: (Condition and Source)

2 1/2" DIA ALUM CAP ON A 1" D.O. IRON PROTRUDER 17" ABOVE A 3 FT DIA. MOUND OF STONE. (REN # 37).

ORIG. CORNER STONE NOT SEEN

T 28S R 2W

S 9 | S 10
S 16 | S 15
RE 4287

Accessories Found:

ALL ORIG. BT'S NOW GONE

BT'S PER REN # 30

22" NOW 29" DIA D. FIR WITH A FULLY HEALED DOUBLE BLAZE BEARS N 42° E, 120.5 FT. (AGREES WITH REC.)

17" NOW 24" DIA 2 1/2' HIGH SOLID D. FIR STUMP WITH A FULLY HEALED BLAZE, BEARS N 21 1/2° W 150.5 FT (AGREES WITH REC.)

23" NOW 29" DIA D. FIR WITH A FULLY HEALED DOUBLE BLAZE, BEARS S 81 1/2° E, 154.7 FT (AGREES WITH REC)

19" NOW 23" DIA D. FIR WITH A FULLY HEALED DOUBLE BLAZE, BEARS S 39 1/2° W 135.0 FT (AGREES WITH REC)

RENEWAL

Monument Set (Procedure and Description)

Monument Detail

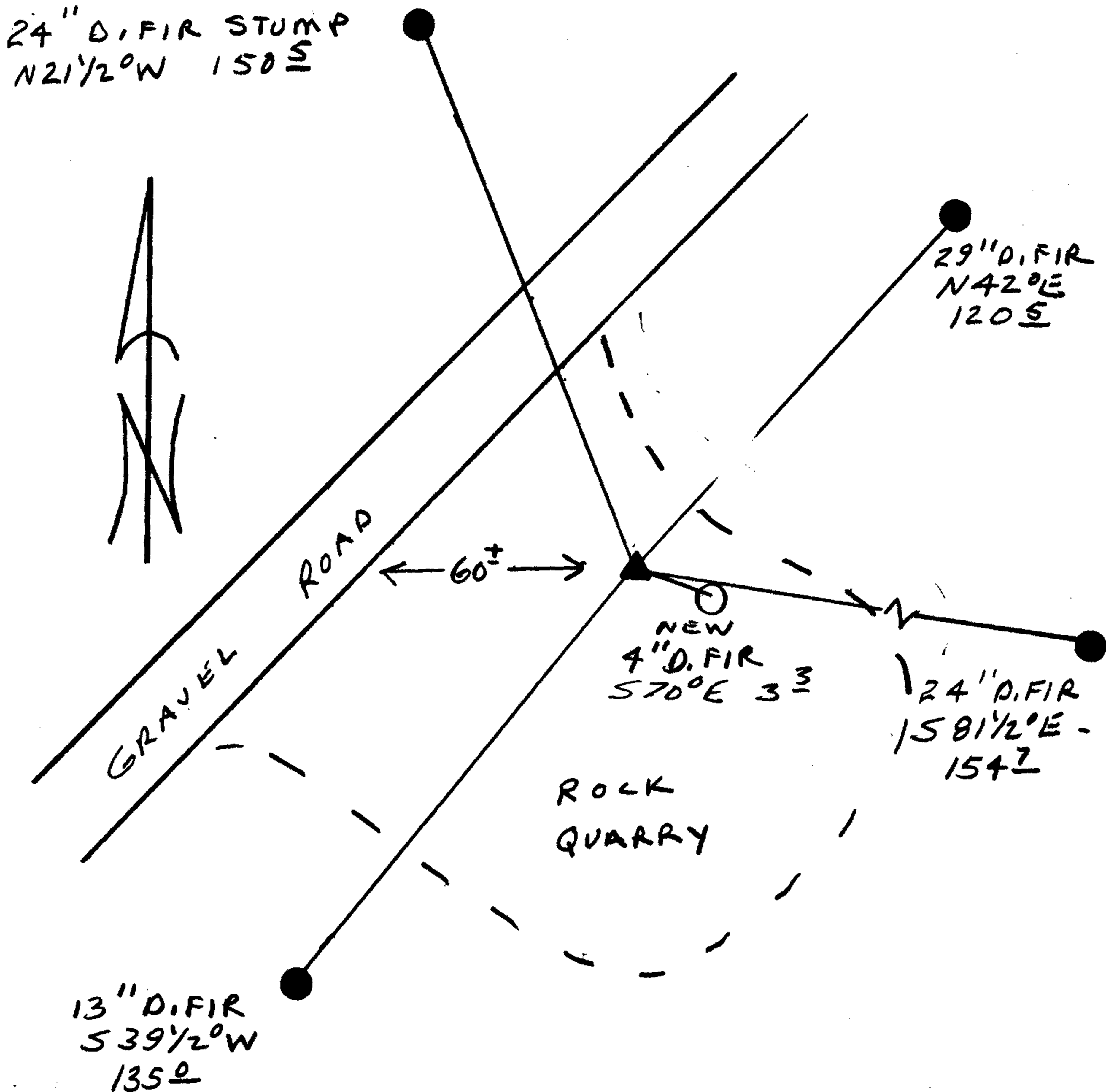
ALUM CAP ON A UNFLANGED 36" LONG IRON PIPE IS DRIVEN DOWN AND STABILIZED WITH A 3 1/2 DIA BY 2" HIGH MOUND OF STONE PROTRUDES 7" ABOVE MOUND OF STONE.

N/A

New Accessories

4" DIA D. FIR DOUBLE BLAZE AND SCRIBED "X BT" BEARS S 70° E, 3.3 FT

Sketch of Monument, Accessories, and General Area



Location & Comments

CORNER LIES APPROX 60' EAST OF A GRAVEL ROAD ON THE EASTERLY EDGE OF A ROCK QUARRY. APPROX 25 FT HIGHER THAN ROAD.

Comp. Declin. 17 3/4° E
Agency DCSO
Party Chief RANDALL W. SMITH
Notekeeper Randall W. Smith
Witnesses STEPHEN J. FLAUSE

Address

Surveyor's Seal
REGISTERED
PROFESSIONAL
LAND SURVEYOR

Randall W. Smith
EXPIRES 6-30-96

OREGON
JULY 25, 1990
RANDALL W. SMITH
2489