

GOVERNMENT CORNER RESTORATION FORM

Date: 12/19/95 By: BC

Township 32 S Range 7 W Sec. 32 County DOUGLAS

This survey consists of:

State OR

Date 10-2-95

No. _____

Map: _____

Narrative: _____

Corner Rpt: CS 64/64-7

Corner Designation

S32 | S33
ONLY

- DOUGLAS COUNTY
SURVEYOR
- Condition Report Only
 - Not Found
 - Renewed
 - Unrecorded
 - Surveyed In
 - Referenced Out

PI # 300100

Previous Renewals 1900 THIEL, 1954 PRICE

Monument(s) Found: (Condition and Source)

2" O.D. IRON PIPE PROTRUDES
6" ABOVE GROUND, (1954 PRICE)

1900 CORNER STONE SET BY
THIEL NOT FOUND.

N/A

MONUMENT DETAIL

Accessories Found:

14" NOW DOWN AND ROTTED D.FIR NO SCRIBING
VISIBLE, ROOT HOLE BEARS S58°W 12.5 FT
(AGREES WITH REC) O.B.T.

14" NOW 18" DIA 2 FT D.FIR STUMP WITH A
FULLY HEALED SINGLE RAZE BEARS N41 1/2°E
30.4 FT (AGREES WITH REC) 1954 PRICE

FOUND A ROOT HOLE NEAR ORIGINAL BEARING
AND DISTANCE OF NE O.B.T. CN 38°E, 23.1 FT)

Monument Set (Procedure and Description)

Monument Detail

NONE

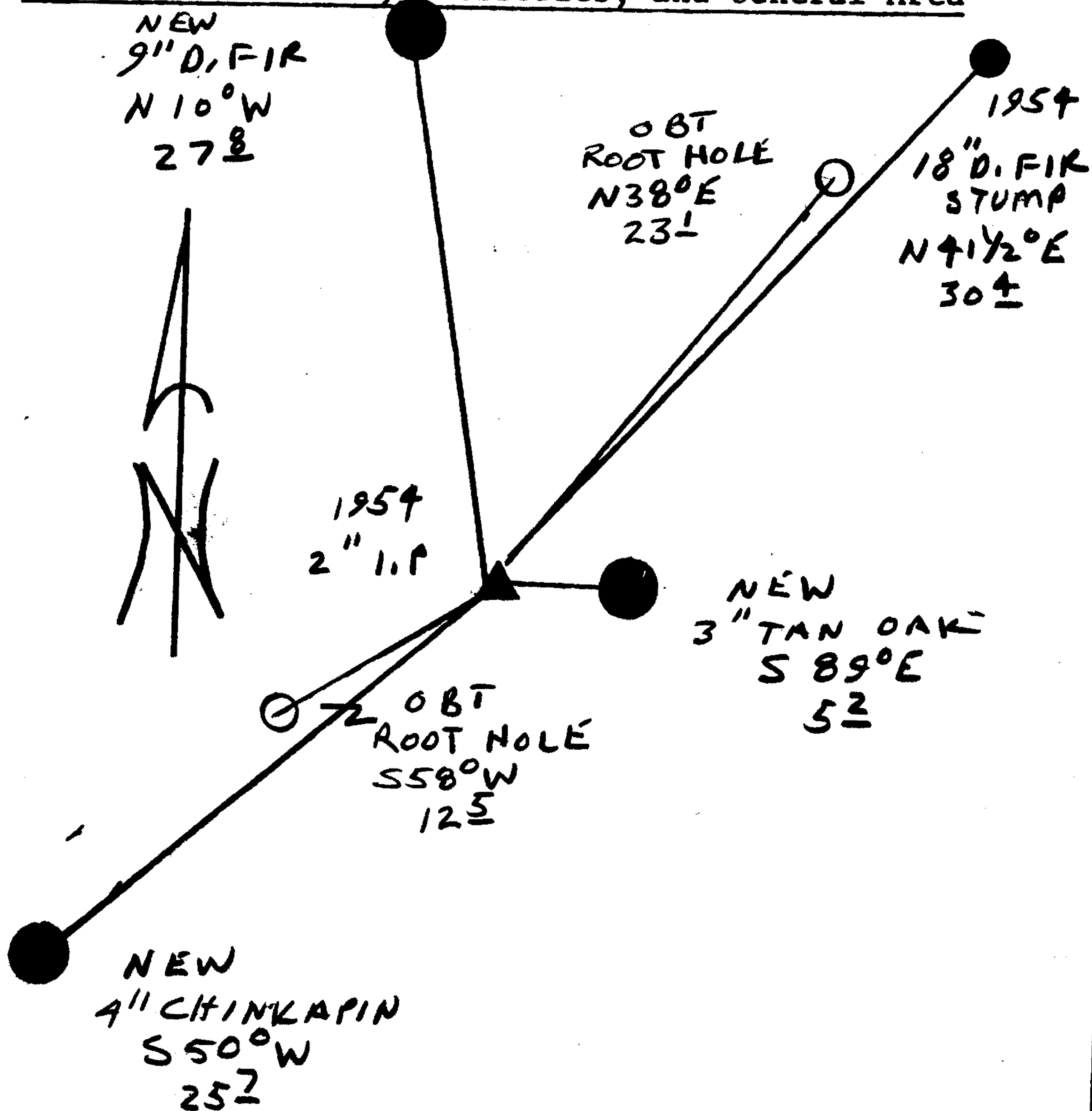
1954 PRICE 2" DIA IRON PIPE IS FIRMLY SET IN GROUND, DID NOT WANT TO DISTURB GROUND TO SET A BLIP AS IT WOULD NOT BE AS STABLE.

N/A

New Accessories

- 9" DIA. D. FIR DOUBLE BLAZED AND SCRIBED "T32S R7W SC 32 CS BT", BEARS N10°W, 27.8 FT.
- 3" DIA. TAN OAK DOUBLE SCRIBED AND SCRIBED "X BT" BEARS S89°E, 5.2 FT
- 4" DIA. PISTOL BUTT CHINKAPIN DOUBLE BLAZED AND SCRIBED "X BT" CENTER OF ROOTCROWN BEARS S50°W, 25.7 FT

Sketch of Monument, Accessories, and General Area



Location & Comments

CORNER IS ON A STEEP NORTH SLOPE APPROX 50 FT SOUTH OF A GRAVEL ROAD

Comp. Declin. 17 3/4° E
 Agency BCSO
 Party Chief RANDALL W SMITH
 Notekeeper RENEE W...
 Witnesses STEPHEN J FLAUS

Address

Surveyor's Seal