

GOVERNMENT CORNER RESTORATION FORM

Date: 12/18/95 By: BC  
This survey consists of:

Township 33S Range 7W Sec. 4

County DOUGLAS Map: \_\_\_\_\_

State OR Date 10-19-95

No. \_\_\_\_\_ Narrative: \_\_\_\_\_  
Corner Rpt: CS 04/04-5

Corner Designation

CC  
S5 | S4

DOUGLAS COUNTY

- Condition SURVEYED only
- Not Found
- Renewed
- Unrecorded
- Surveyed In
- Referenced Out

Previous Renewals 1954 PRICE, 1967 OCSO, PSI 300700

MONUMENT DETAIL

Monument(s) Found: (Condition and Source)

2" O.D. IRON PIPE PROTRUDING  
2" ABOVE GROUND WITH A 1"  
OIA METAL WASHER IN TOP  
STAMPED "RS CC". IRON PIPE  
IS BENT, TOP IS 1 FT WEST OF  
PLUMB. (1954 PRICE).

N/A

Accessories Found:

9" NOW 25" DIA. PONDEROSA PINE WITH A PREVIOUSLY OPENED  
NOW HEALED BLAZE, BEARS S 47 1/2° W, 92.5 FT (REC  
S 47 1/2° W 93.7 FT, DIST IS A SLOPE MEASUREMENT) OBT  
ORIG. CHINQUAPIN BT IS GONE

6" NOW 6" DIA. DOWN AND ROTTING PINE WITH SCRIBING  
VISIBLE "T 33S R7W S4 RS 338 BT" ROOT HOLE AGREES  
WITH RECORD BEARING AND DISTANCE (S 78° E, 16.3 FT)  
1954 PRICE

1967 OCSO CHINQUAPIN BT NOW GONE A ROOT HOLE  
WAS FOUND AT RECORD BEARING AND DISTANCE  
(S 30° E, 17.3 FT)

RENEWAL

Monument Set (Procedure and Description)

2 3/8" DIA BRASS CAP ON A 1 3/8" O.D. BY 32" LONG IRON PIPE IS SET AT PLUMP POSITION OF FOUND 2" I.P. PROTRUDES 3" ABOVE GROUND. REMOVED 2" I.P. MEASURED 35" LONG IS RESET ALONG NORTH EDGE OF BC/IP PROTRUDES 2" ABOVE GROUND.

Monument Detail

DOUGLAS COUNTY SURVEYORS

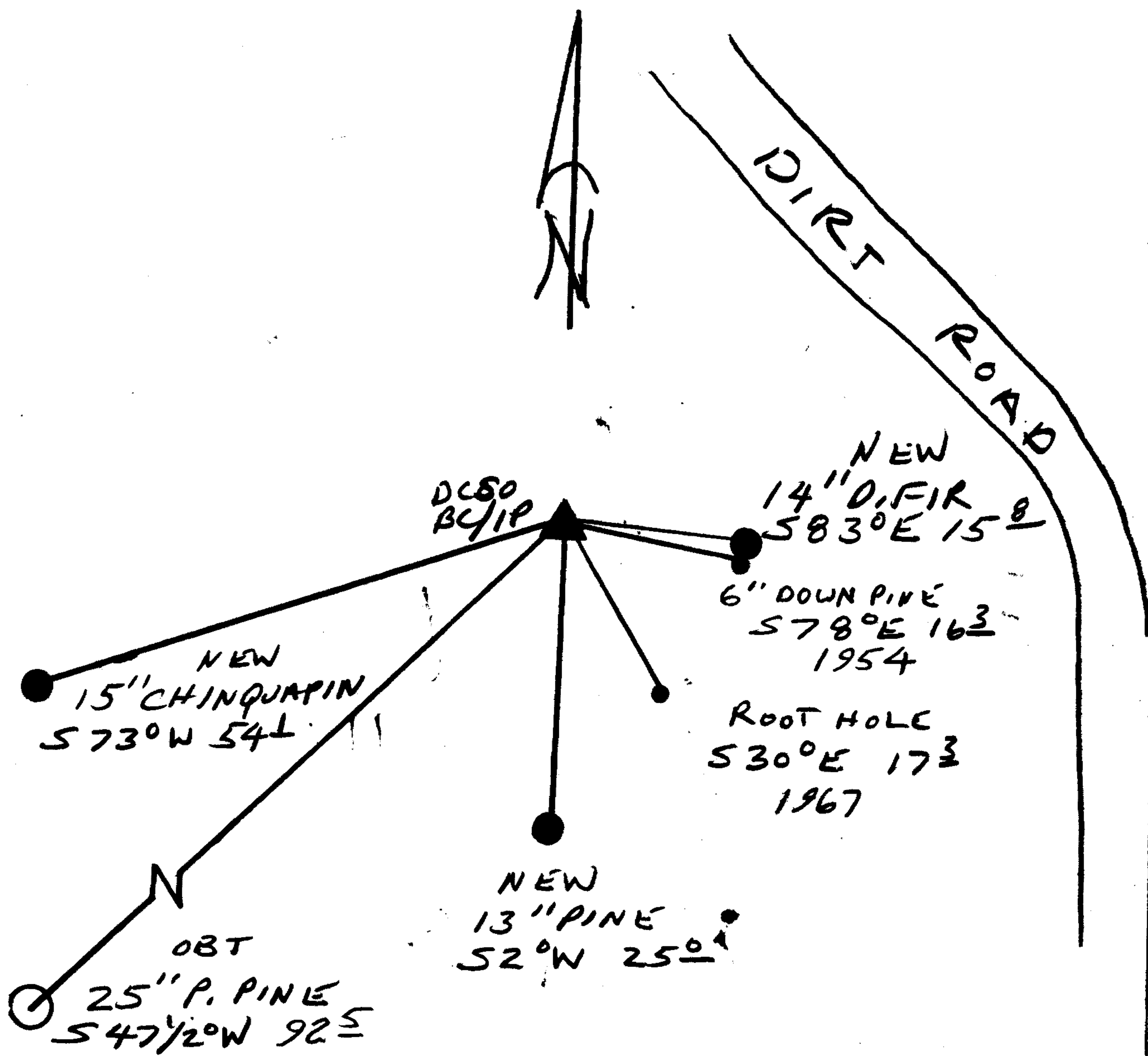
T 32 S  
 CC R  
 S 5 | S 4 7  
 W

T 33 S  
 1995  
 OFFICE

New Accessories

14" DIA. D. FIR DOUBLE BLAZED AND SCRIBED "T33S R7W CC S4 CS BT" BEARS S 83° E, 15.8 FT.  
 13" DIA. PINE DOUBLE BLAZED AND SCRIBED "T33S R7W CC S5 CS BT" BEARS S 2° W, 25.0 FT  
 15" DIA CHINQUAPIN DOUBLE BLAZED AND SCRIBED "T33S R7W CC S5 CS BT" BEARS S 73° W, 54.1 FT

Sketch of Monument, Accessories, and General Area



Location & Comments

Comp. Declin. 17 3/4° E  
 Agency DCSO  
 Party Chief RANDALL W SMITH  
 Notekeeper *Randall W Smith*  
 Witnesses STEPHEN J FRAUSE

Address

Surveyor's Seal

REGISTERED PROFESSIONAL LAND SURVEYOR

*Randall W Smith*  
 EXPIRES 6-30-96

OREGON  
 JULY 25, 1990  
 RANDALL W. SMITH  
 2489