

GOVERNMENT CORNER RESTORATION FORM

Date: 12/18/95 By: BC

Township 22S Range 8W Sec. 28 County DOUGLAS This survey consists of:

State OR Date 10-17-95 No. _____
Map: _____
Narrative: _____
Corner Rpt: CS 64/64(4)

Corner Designation

$\frac{1}{4}$ $\frac{S 28}{S 33}$

DOUGLAS COUNTY SURVEYOR

- Condition Report Only
- Not Found
- Renewed
- Unrecorded
- Surveyed In
- Referenced Out

P.I. 340200

Previous Renewals 1962 BLM, 1995 WARD (M122-62)

MONUMENT DETAIL

Monument(s) Found: (Condition and Source)

3/4" DIA. BLM BRASS CAP ON A 2 1/2" O.D. BY 30" LONG IRON PIPE. FOUND OUT OF GROUND, LEANING AGAINST 72" DIA D.FIR STUMP. (1962 BLM)

U.S. DEPT. OF THE INTERIOR

$\frac{1}{4}$ $\frac{S 28}{S 33}$

CORNER POSITION FALLS IN A SLIPE AREA. (UNABLE TO OCCUPY)

T22S R8W.

1962

BUR. OF LAND MANAGEMENT

Accessories Found:

50" NOW 72" DIA 2 1/2 FT HIGH ROTTING D.FIR STUMP, NO BARK SCRIBING VISIBLE BEARS N 36°W, 8.7 FT (AGREES WITH 1995 WARD) OBT (ORIG REC N 45°W, 5.9 FT, ~~UNDETERMINED BARK~~ STUMP IS BIG BRC DIFFERENCES ARE DIFFICULT TO DETERMINE).

10" NOW 19" DIA D.FIR WITH A FULLY HEALED BLAZE, BEARS S 87 1/2°W, 14.7 FT (AGREES WITH 1995 WARD) 1962 BLM.

10" NOW 15" DIA DOWN AND ROTTING D.FIR ILLEGIBLE SCRIBE MARKS FOUND, ROOT HOLE NEAR REL BEARING AND DISTANCE (N 55 1/2°W, 17.5 FT) 1962 BLM

✓ 340200

C.S. File No. 64/64-4

RENEWAL

Monument Set (Procedure and Description)

Monument Detail

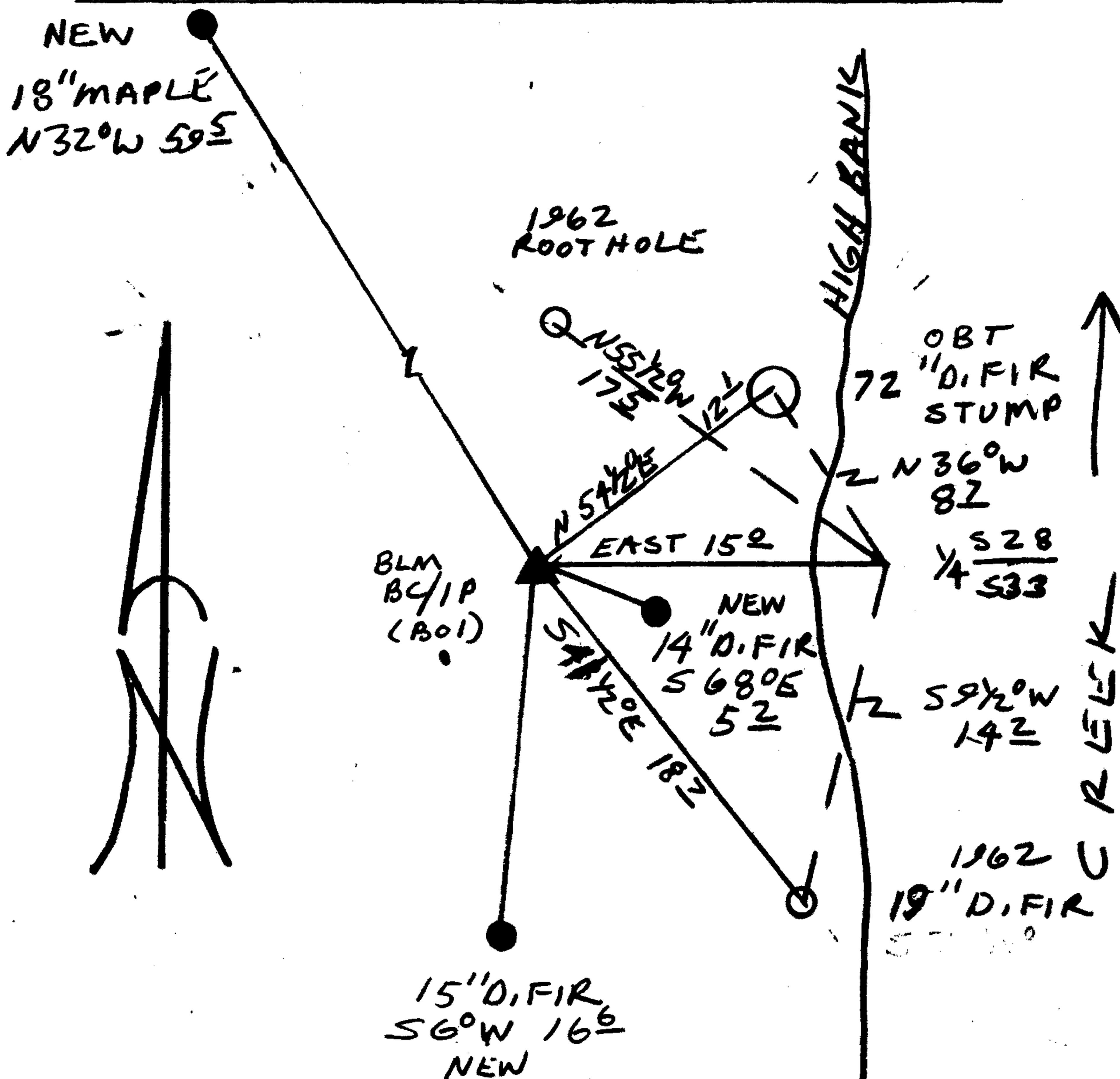
BEARING'S AND DISTANCES AS RECORDED IN 1995 BY WARD (M 122-62) IS CHECKED BY DISTANCE MEASUREMENTS AND BEARING'S BETWEEN ORIG. D. FIR STUMP AND 1962 BLM RENEWAL BT'S. FIELD MEASUREMENTS AGREE WITH WARD'S USE OF FACE MEASURE TO OBT. A POSITION IS DETERMINED BY CALCULATION TO SET BLM BC/IP OUT OF SLIDE AREA WEST 15 FT, THE MARKS "B01 15 FT EAST TO CORNER RESET DCSO 1995" ARE ADDED TO BLM BC/IP. BC/IP PROTRUDES 9" ABOVE GROUND.

US DEPT. OF THE INTERIOR
 B01
 15 FT EAST
 RESET S28 TO CORNER
 DCSO / A S33
 1995
 T25 R8W
 1962
 BUR. OF LAND MANAGEMENT

New Accessories

- 15" DIA. D. FIR DOUBLE BLAZED AND SCRIBED "Y4533 CS BT" BEARS S6°W, 16.6 FT.
- 14" DIA. D. FIR DOUBLE BLAZED AND SCRIBED "Y4533 CS BT" BEARS S68°E, 5.2 FT
- 18" MAPLE DOUBLE BLAZED AND SCRIBED "Y4528 CS BT" BEARS N32°W, 59.5 FT
- 72" D. FIR STUMP (OBT) BEARS N54 1/2°E, 12.1 FT
- 19" D. FIR (1962 BLM) BEARS S44 1/2°E, 18.7 FT

Sketch of Monument, Accessories, and General Area



Location & Comments.

Comp. Declin. 17 3/4° E
 Agency DCSO
 Party Chief RANDALL W SMITH
 Notekeeper [Signature]
 Witnesses STEPHEN J FLAUSK

Address

Surveyor's Seal

REGISTERED
 PROFESSIONAL
 LAND SURVEYOR
Randall W Smith
 EXPIRES 6-30-96
 OREGON
 JULY 25, 1990
 RANDALL W. SMITH
 2489