

GOVERNMENT CORNER RESTORATION FORM

Date: 10/5/95 By: PC  
This survey consists of:

Township 27S Range 5W Sec. 12 County DOUGLAS Map: \_\_\_\_\_  
State OR Date 8-31-95 No. \_\_\_\_\_ Narrative: \_\_\_\_\_  
Corner Rpt: CS 64/63-15

Corner Designation

SW EXT L COR  
DLC 38

DOUGLAS COUNTY  
SURVEYOR

- Condition Report Only
- Not Found
- Renewed
- Unrecorded
- Surveyed In
- Referenced Out

PI # 038030

Previous Renewals 1914 FLESER, 1939 BOYER, 1982 MONREAN

Monument(s) Found: (Condition and Source)

1/2" DIA AXLE PROTRUDING 7"  
ABOVE GROUND. 1939 BOYER

N/A

Accessories Found:

FD ALL REFERENCE'S AS NOTED IN 1982 DCSD  
RENEWAL BY MONREAN SEE CS. 59/30 FOR  
SKETCH.

RENEWAL

Monument Set (Procedure and Description)

2 3/8" DIA DCSO BRASS CAP ON  
 A 1 3/8" O.D. BY 32" LONG IRON  
 PIPE IS SET WEST 23 FT FROM  
 FOUND AXLE. PROTRUDES 4"  
 ABOVE GROUND

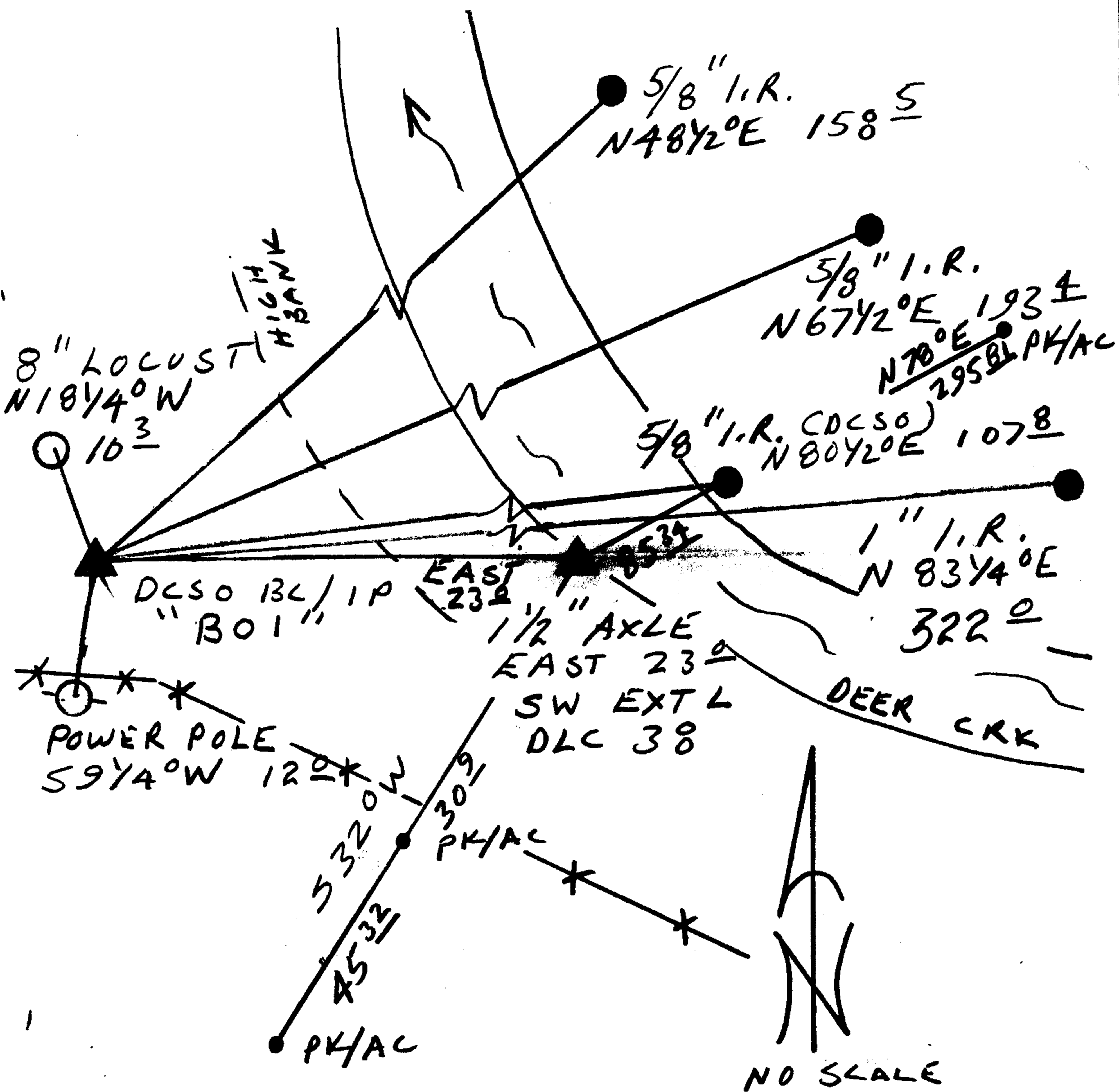
Monument Detail

DOUGLAS COUNTY SURVEYORS  
 T 27 S  
 B 01 R  
 SW EXT L 5  
 DLC 38 W  
 BEARS  
 EAST 23 FT  
 1995  
 OFFICE

BRG'S AND DISTANCE'S TAKEN FROM B01  
 New Accessories REFERENCED TO B01

- 8" DIA LOCUST DOUBLE BLAZED AND SCRIBED "B01 CS BT" BEARS N 18 1/4° W, 10.3 FT
- POWER POLE "PPL R 5639" BEARS S 9 1/4° W, 12.0 FT
- 5/8" I.R. BEARS N 48 1/2° E, 158.5 FT SEE M 52-33
- 5/8" I.R. BEARS N 67 1/2° E, 193.4 FT SEE M 52-33
- 5/8" I.R. WITH DCSO YELLOW PASTIC CAP BEARS N 80 1/2° E, 107.8 FT (1982)
- 1" I.R. BEARS N 83 1/4° E, 322.0 FT SEE M 52-33

Sketch of Monument, Accessories, and General Area



Location & Comments

AXLE LIES ON WEST BANK  
 OF DEER CRK. DCSO BL/IP  
 "B01" IS SET AT A POSITION  
 THAT STANDS A BETTER  
 CHANCE OF SURVIVING  
 FLOOD DAMAGE. B01 IS  
 N 28° W, 122 FT FROM THE  
 MOST NORTHERLY CHAIN LINK  
 FENCE CORNER.

Comp. Declin. 17 3/4° E  
 Agency DCSO  
 Party Chief RANDALL W. SMITH  
 Notekeeper Randall W. Smith  
 Witnesses STEPHEN J. FLAISE

Address

REGISTERED Surveyor's Seal  
 PROFESSIONAL  
 LAND SURVEYOR

Randall W. Smith  
 EXPIRES 6-30-96

OREGON  
 JULY 25, 1990  
 RANDALL W. SMITH  
 2489

GOVERNMENT CORNER RESTORATION FORM

Township 27 S Range SW Sec. 19 County DOUGLAS

State OREGON Date 1-14-82 No. \_\_\_\_\_

Corner Designation

SW EXT L COR DLC # 38

- Condition Report Only
- Not Found
- Renewed
- Unrecorded
- Surveyed In
- Referenced Out

Previous Renewals 17 (ALSO REFERS TO A 1914 RENEWAL BY FLESER) MONUMENT DETAIL

Monument(s) Found: (Condition and Source)

FOUND 1 1/2" (REC. 1") DIA. AXLE FROM RENEWAL NO. 17.

N/A

Accessories Found:

NONE

#159 X

CS 64/63-15 /  
GLEB No. 59/30 C

RENEWAL

Monument Set (Procedure and Description)

Monument Detail

NONE

NOTE: AS THE MONUMENT LIES ON WEST SHORE OF DEER CREEK IT IS NECESSARY TO REFERENCE THE MONUMENT POSITION AS IT COULD BE LOST DURING FLOOD CONDITIONS.

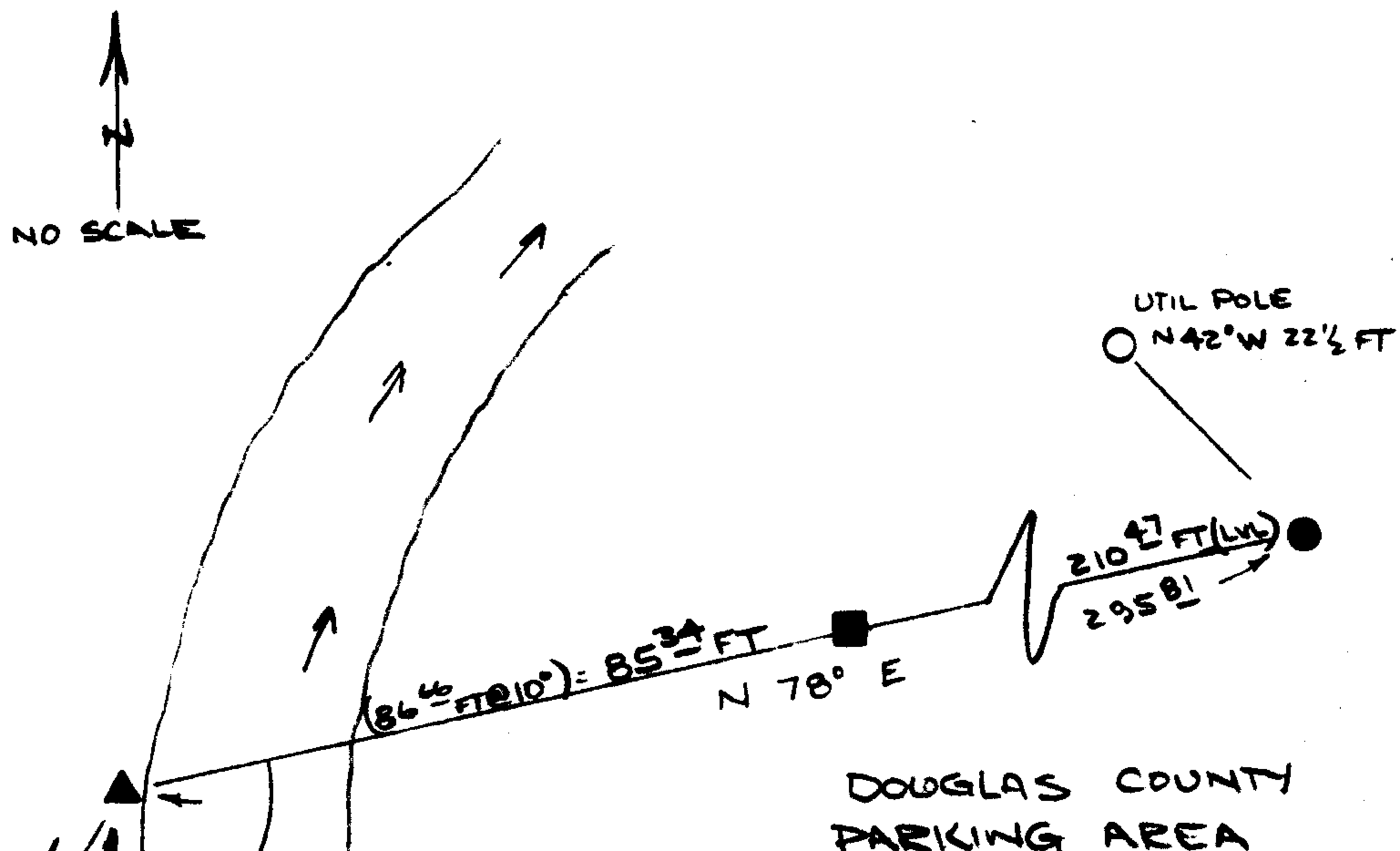
TO DATE WE ARE NOT ABLE TO LOCATE ANY RECORD OF A 1914 RENEWAL OF THIS MONUMENT OR THE ACCESSORY CORNER. IN ORDER <sup>TO</sup> REFERENCE POSITION, WE SET REFERENCE MARKERS AS NOTED BELOW

New Accessories

- AT COMPASS BEARING N 78° E AT 85<sup>34</sup> FEET A 5/8" X 30" IRON ROD, AT 295<sup>81</sup> FEET SET A PK NAIL IN ASPHALT. PLACE DCSO PLASTIC CAP ON IRON ROD.
- AT COMPASS BEARING S 32° W AT 30<sup>90</sup> FEET A PK NAIL IN ASPHALT, AT 76<sup>22</sup> FEET SET A PK NAIL IN ASPHALT

Sketch of Monument, Accessories, and General Area

Location & Comments



Comp. Declin. 19° EAST  
 Agency DOUGLAS COUNTY SURVEYORS OFF.  
 Party Chief LARRY E. MUNREAN  
 Notekeeper Jerry E. Munrean DEPUTY  
 Witnesses JOHN M. POWELL

*OK JEM*

FOUND ▲ = 1 1/2" DIA. AXLE

SET - ■ = 5/8" X 30" IRON ROD  
 - ● = PK IN AC.

BEARINGS SHOWN BASED ON MAGNETIC COMPASS BEARING - HORIZONTAL ANGLE OBSERVED WITH A 1" THEODOLITE DISTANCE MEASURED CHAIN & EDM

Surveyor's Seal