

GOVERNMENT CORNER RESTORATION FORM

Date: 10/4/95 By: BC

Township 25S Range 6W Sec. 20 County DOUGLAS

This survey consists of:

State OR Date 7-5-95

No. _____

Map: _____
Narrative: _____
Corner Post: CS 64/63-13

Corner Designation

1/4 S 20 | S 21

- DOUGLAS COUNTY
- Condition Reported Only
 - Not Found
 - Renewed
 - Unrecorded
 - Surveyed In
 - Referenced Out

Previous Renewals 1962 DCSSO PI# 300340

Monument(s) Found: (Condition and Source)

2 1/2" DIA DCSSO BRASS CAP ON A
1 1/2" O.D. IRON PIPE PROTRUDES
12" ABOVE GROUND (1962 DCSSO)

COUNTY SURVEYORS OFFICE
T25S 6W

1/4 S 20 | S 21

1962

Accessories Found:

12" NOW 37" DIA W. OAK NO BLAZE VISIBLE, BEARS
N 3 1/2° W, 248.0 FT (REC N 3 1/2° W 249.5 FT) OBT

13" NOW 33" DIA. W. OAK WITH A PREVIOUSLY OPENED
BLAZE, NO SCRIBING VISIBLE, BEARS N 90° E, 261.0 FT
(REC N 90° E, 258.7 FT) OBT

17" NOW 25" DIA. W. OAK WITH A FULLY HEALED DOUBLE
BLAZE, BEARS N 30° W, 39.8 FT (AGREES WITH REC)
1962 DCSSO

36" NOW DOUBLE TRUNKED 4 FT HIGH D. FIR STUMP
WITH A FULLY HEALED DOUBLE BLAZE ON 36" DIA
SOUTH TRUNK, CENTER OF SOUTH TRUNK BEARS
N 25° E, 69.8 FT (AGREES WITH REC.) 1962 DCSSO

Monument Set (Procedure and Description)

Monument Detail

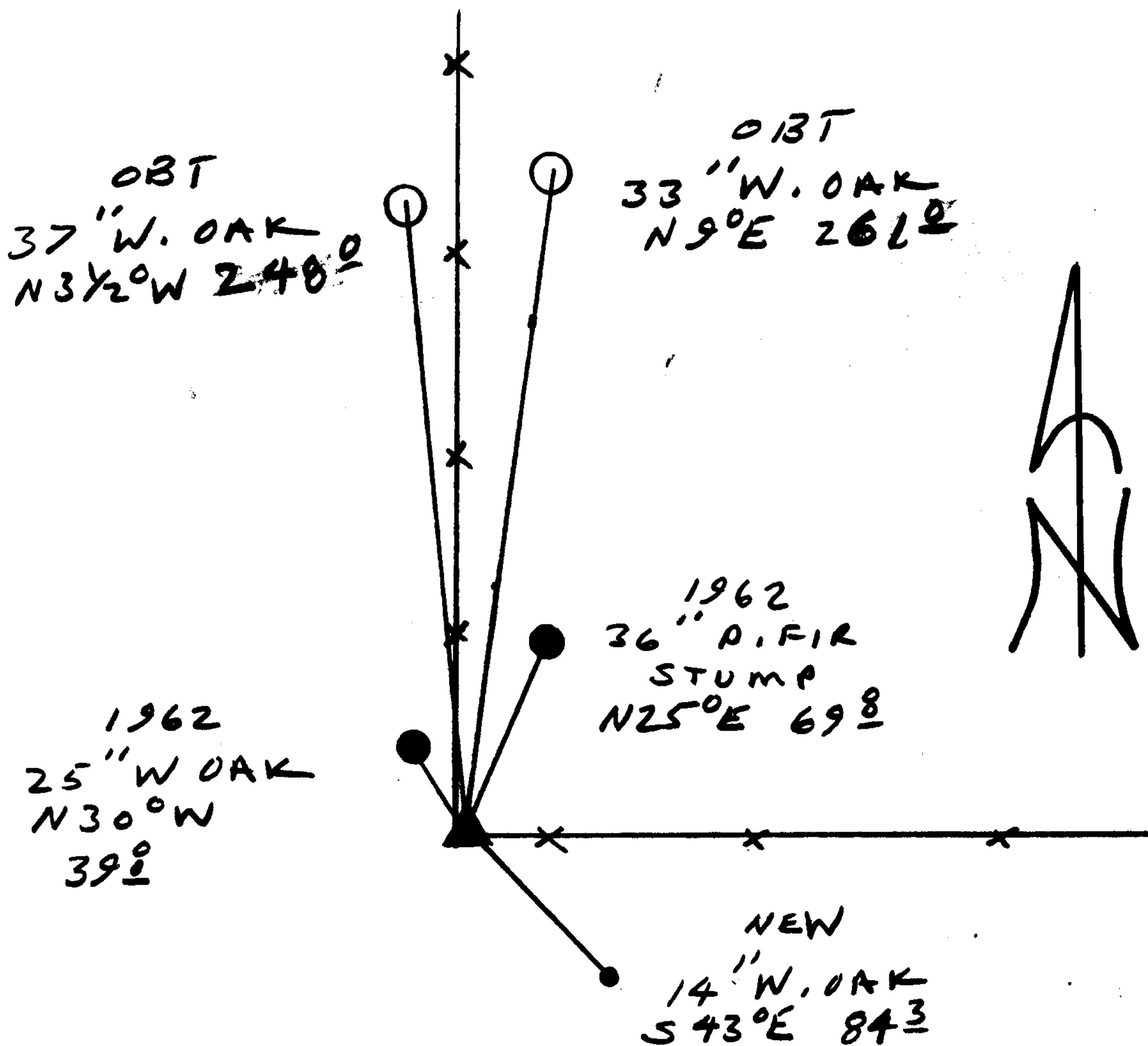
NONE

N/A

New Accessories

14" DIA. W. OAK DOUBLE BLAZED AND SCRIBED "14521 CS BT"
BEARS S 43° E, 84.3 FT

Sketch of Monument, Accessories, and General Area



Location & Comments

CORNER LIES NEAR THE
INTERSECTION OF A NORTH
AND EAST RUNNING FENCE
LINE 3 FT EAST OF
NORTH FENCE A 1 FT NORTH
OF EAST FENCE

Comp. Declin. 17 3/4° E
Agency DCSO
Party Chief RANDALL W SMITH
Notekeeper Randall W Smith
Witnesses STEPHEN J FLAUSE

Address

Surveyor's Seal

REGISTERED
PROFESSIONAL
LAND SURVEYOR

Randall W Smith
ETALES 6-31-96

OREGON
JULY 25, 1990
RANDALL W. SMITH
2489