

RENEWAL

Monument Set (Procedure and Description)

2 3/8" DIA. DCSO BRASS CAP ON
 A 1 3/8" O.D. BY 32" LONG IRON
 PIPE IS SET AT A POSITION
 DETERMINED FROM BT'S PROTRUDES
 7" ABOVE GROUND

Monument Detail

DOUGLAS COUNTY SURVEYORS
 T 245

S30 | S29 R
 S31 | S32 4
 W

1995

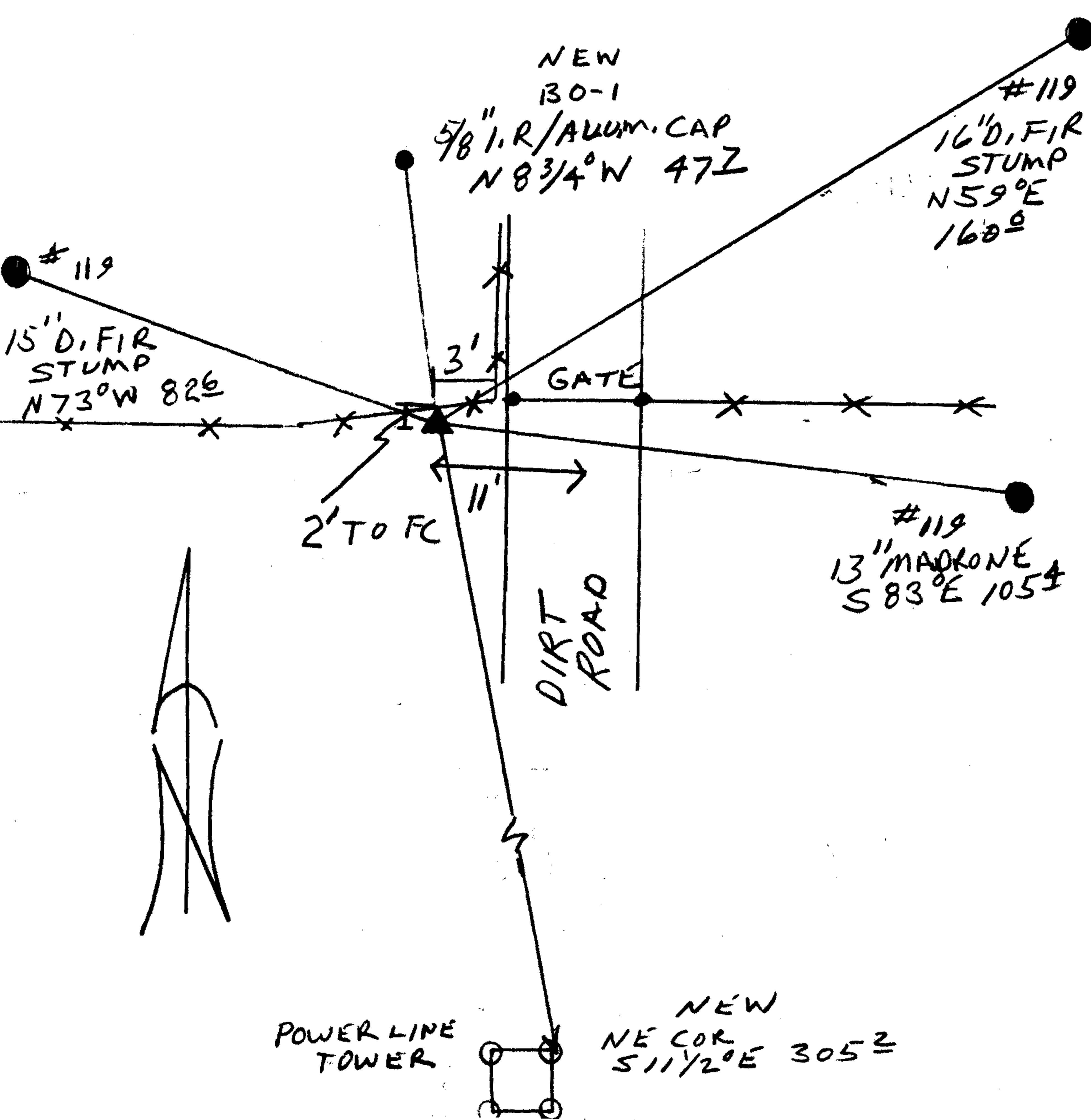
OFFICE

New Accessories

1/2" CORNER OF POWER LINE TOWER WHERE IT MEETS 3' DIA
 2' FT HIGH CONCRETE POST AT NE COR. BEARS S 1 1/2° E,
 305.2 FT (NO. "4 PPTL - BPA 42")

5/8" I.R. WITH ALUM CAP STAMP "BO-1 1995" BEARS N 8 3/4° W 46.7 FT
 PROTRUDES 4" ABOVE GROUND

Sketch of Monument, Accessories, and General Area



Location & Comments

NO REASONABLE TREES
 IN VICINITY

CORNER IS 2 FT SOUTH OF
 A EAST-WEST FENCE AND
 11' WEST OF DIRT ROAD Q.
 CORNER LIES NEAR TOP
 OF RIDGE IN POWER LINE
 EASEMENT

Comp. Declin. 17 3/4° E
 Agency DCSO
 Party Chief RANDALL W SMITH
 Notekeeper Randall W Smith
 Witnesses STEPHEN J CHAUSE

Address

Surveyor's Seal

REGISTERED
 PROFESSIONAL
 LAND SURVEYOR

Randall W Smith
 EXPIRES 6-31-96

OREGON
 JULY 25, 1990
 RANDALL W. SMITH
 2469