

GOVERNMENT CORNER RESTORATION FORM

Date: 9/21/95 By: AG

Township 25S Range 2W Sec. 13

County DOUGLAS

This survey consists of:

State OR

Date 3-29-95

No. _____

Map: _____

Narrative: _____

Corner Rpt: CS 64/58-10

Corner Designation

S14 | S13
S23 | S24

DOUGLAS COUNTY

Condition SURVEYED only

Not Found

Renewed

Unrecorded

Surveyed In

Referenced Out

MONUMENT DETAIL

Previous Renewals #20, 24 1962 BLM

Monument(s) Found: (Condition and Source)

3 1/2" DIA BLM BRASS CAP ON A
2 1/2" O.D. IRON PIPE PROTRUDING
5" ABOVE GROUND (1962 BLM)

1 3/4" I.D. IRON PIPE PROTRUDING
14" ABOVE GROUND IS FOUND
ALONG EAST EDGE OF BLM BC/IP

U.S. DEPT. OF THE INTERIOR

T 25 S R 2 W

S14 | S13
S23 | S24

1962

BOR. OF LAND MANAGEMENT

Accessories Found:

OBT → 6" NOW 20" DIA 5 FT HIGH D. FIR STUMP WITH A
FULLY HEALED BLAZE, BEARS N 12° W, 13.9 FT
(AGREES WITH REC) OBT

12" NOW 14" DIA 3 FT HIGH D. FIR STUMP WITH A
FULLY HEALED SINGLE BLAZE, BEARS N 31° E, 25.4 FT
(AGREES WITH REC). REN #20

14" NOW 20" DIA. 3 1/2 FT HIGH D. FIR STUMP WITH A
FULLY HEALED SINGLE BLAZE, BEARS S 9 1/2° E, 15.5 FT
(REC S 9 1/2° E, 14.2 FT). REN #20

OBT? → 9" NOW 9" DIA 20 FT HIGH D. FIR SNAG WITH A
FULLY HEALED DOUBLE BLAZE, BEARS S 52° W, 17.8 FT
(REC. S 52° W 18.5 DIST MEASURES TO TRUNK), REN #20

14" NOW 14" DIA 3 FT HIGH D. FIR STUMP, SCREWING
FOUND "T25S" LOWER BLAZE IS HEALED, BEARS
N 57° E, 52.1 FT (AGREES WITH REC) 1962 BLM

Monument Set (Procedure and Description)

Monument Detail

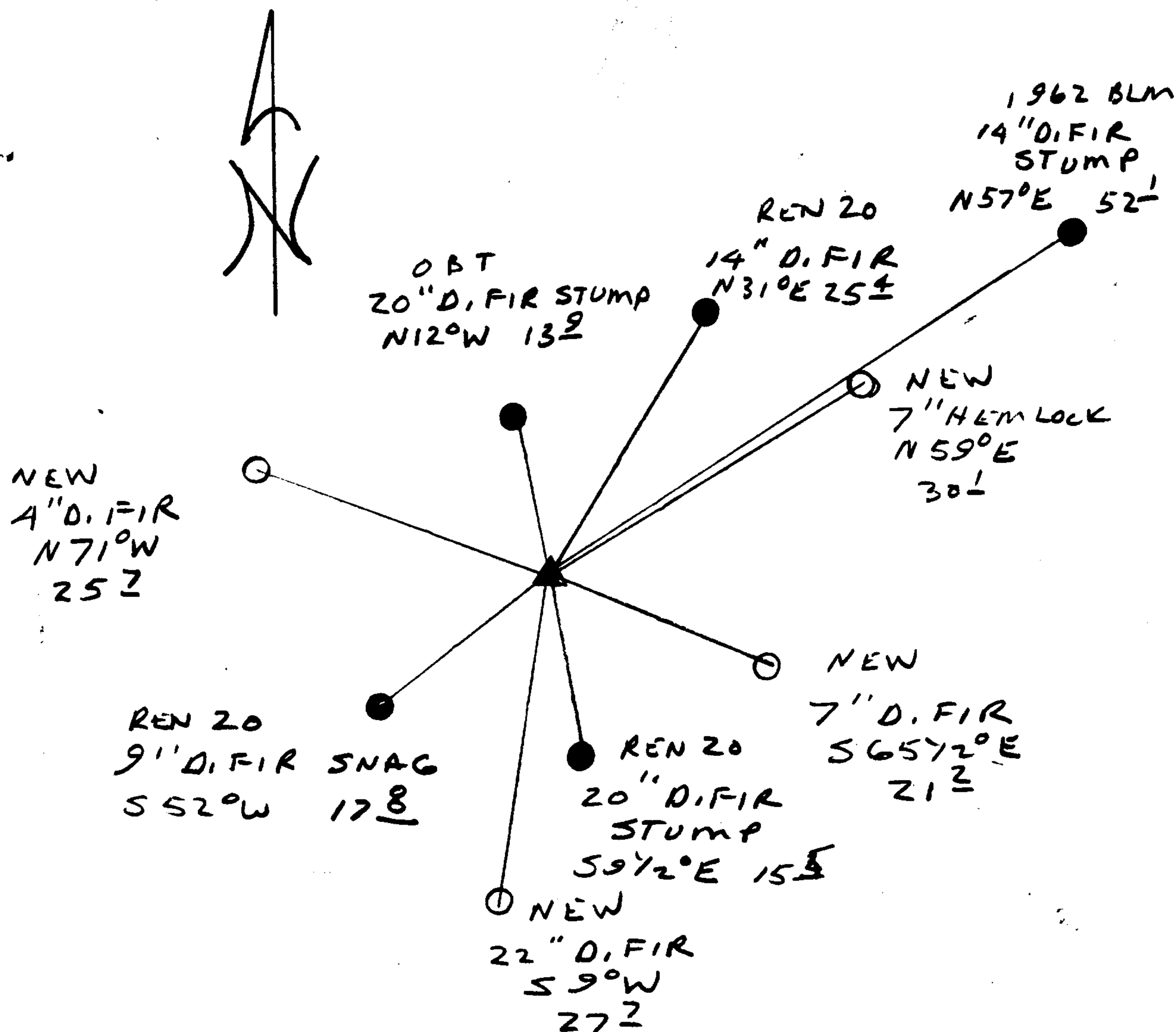
N/A

N/A

New Accessories

- 7" DIA. HEMLOCK DOUBLE BLAZED AND SCRIBED "T255 R2WS13CSBT" BEARS N 59°E, 30.1 FT
- 7" DIA. D. FIR DOUBLE BLAZED AND SCRIBED "T255 R2WS24CSBT" BEARS S 65 1/2°E, 21.2 FT
- 22" DIA. D. FIR DOUBLE BLAZED AND SCRIBED "T255 R2WS23CSBT" BEARS S 9°W, 27.7 FT (COLO LINE BLAZED ON NORTH AND SOUTH TRUNK)
- 4" DIA. D. FIR DOUBLE BLAZED AND SCRIBED "XBT" BEARS N 71°W, 25.7 FT

Sketch of Monument, Accessories, and General Area



Location & Comments

Comp. Declin. 173/4°E
 Agency OCCO
 Party Chief RANDALL W. SMITH
 Notekeeper [Signature]
 Witnesses CHARLES J. FRAUSE

Address

Surveyor's Seal

REGISTERED
 PROFESSIONAL
 LAND SURVEYOR

[Signature]
 EXPIRES 6-30-98

OREGON
 JULY 25, 1990
 RANDALL W. SMITH
 2469