

Monument Set (Procedure and Description)

5/8" I.R. AT CORNER IS REFERENCED, MEASURED 27" LONG. A 2 1/8" DIA BRASS CAP ON 1 1/8" O.D. BY 32" LONG IRON PIPE IS SET AT REFERENCED POSITION TOP IS 12" BELOW GROUND. 5/8" I.R. IS SET ALONG NORTH EDGE OF BE/1P 14" BELOW GROUND.

Monument Detail

DOUGLAS COUNTY SURVEYORS

T 29 S

INT L R
DLC 7
45 W

1995 OFFICE

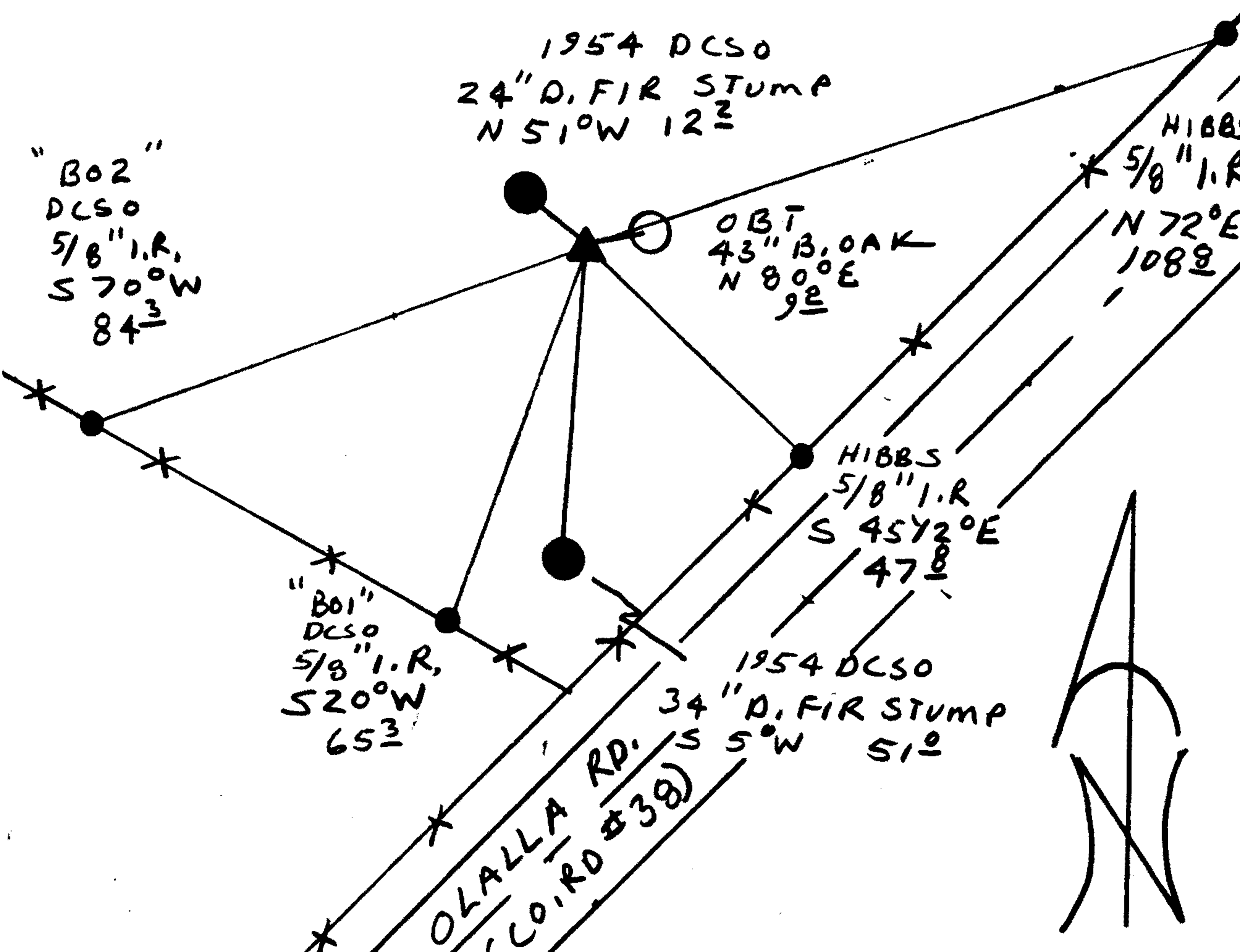
New Accessories

- 5/8" I.R. WITH YELLOW PLASTIC CAP MARKED "HIBBS PLS 2234" BEARS N 72° E, 108.8 FT TOP IS FLUSH WITH GROUND.
- 5/8" I.R. WITH YELLOW PLASTIC CAP MARKED "HIBBS PLS 2234" BEARS S 45 1/2° E, 47.8 FT TOP IS FLUSH WITH GROUND.
- 5/8" X 30" LONG I.R. WITH DCSO ALUM. CAP MARKED "B01 1995" BEARS S 70° W, 65.3 FT TOP PROTRUDES 3" ABOVE GROUND.
- 5/8" X 30" LONG I.R. WITH DCSO ALUM. CAP MARKED "B02 1995" BEARS S 70° W, 84.3 FT TOP PROTRUDES 3" ABOVE GROUND.

Sketch of Monument, Accessories, and General Area

Location & Comments

OPEN FIELD



Comp. Declin. 17 3/4° E
 Agency DCSO
 Party Chief RANDALL W SMITH
 Notekeeper Randall W Smith
 Witnesses STEPHEN J. FLAUS

Address

Surveyor's Seal

REGISTERED PROFESSIONAL LAND SURVEYOR

Randall W Smith

EXPIRES 6/30/96

OREGON
 JULY 25, 1990
 RANDALL W. SMITH
 2489