

GOVERNMENT CORNER RESTORATION FORM

Date: 2/9/95 By: BC
This survey consists of:

Township 21 N Range 5W Sec. 31 County DOUGLAS Map: _____
State OR Date 11/2/90 No. _____ Narrative: _____
Corner Rpt: CS 64/58

Corner Designation

T 21 S
R S36 | S31 R
6 | 5
W S1 | S6 W
T 22 S

DOUGLAS COUNTY SURVEYOR

- Condition Report Only
- Not Found
- Renewed
- Unrecorded
- Surveyed In
- Referenced Out

MONUMENT DETAIL

Previous Renewals #1, #60

Monument(s) Found: (Condition and Source)

FD 14" X 14" X 7" STONE WITH
A PROBABLE "+" MARKED ON A SIDE,
STONE APPEARS TO HAVE BEEN
TIPPED OVER AND IS IN TWO PIECES.
STONE WAS FOUND 1 FT BELOW
GROUND. (SET BY HAINES IN 1943
SEE REN #60).

N/A

Accessories Found:

40" NOW 47" DIA. D. FIR WITH A FULLY HEALED SINGLE BLAZE,
BEARS S 21° E, 31.0 FT (AGREES WITH RECORD) REN #60

8" NOW 21" DIA. D. FIR WITH A FULLY HEALED DOUBLE BLAZE,
BEARS N 72° E, 56.0 FT (AGREES WITH RECORD) REN #60

10" NOW 15" DIA. B. OAK WITH A FULLY HEALED DOUBLE BLAZE,
BEARS S 28° W, 18.8 FT (AGREES WITH RECORD) REN #60

8" NOW 12" DIA. W. OAK WITH A FULLY HEALED SINGLE BLAZE,
BEARS N 2° W, 10.0 FT (AGREES WITH RECORD) REN #60

24" NOW 24" DIA. 14" HIGH ROTTED OAK STUMP WITH AXE
MARKS VISIBLE BEARS S 13° W, 138.6 FT (AGREES WITH
RECORD) ORIG. BT

20" NOW 40" DIA. W. OAK WITH A FULLY HEALED BLAZE,
BEARS S 72° E, 97.9 FT (RECORD S 72° E, 95.7 FT) ORIG. BT

✓ REN #198

File No. CS 64/58

Monument Set (Procedure and Description)

A DCSO 2 3/8" DIA. BRASS CAP ON A 1/4" O.D. BY 31" LONG IRON PIPE IS SET FLUSH WITH GROUND. WITH CORNER STONE RESET UPRIGHT ALONG EAST EDGE OF BC/IP. 3" BELOW GROUND

BC/IP IS SET AT A POSITION DETERMINED FROM BEARING TREE'S WHICH ALSO FELL ON CORNER STONE

DOUGLAS COUNTY SURVEYORS

T215

R	536	S31	R
6			5
W	S1	S6	W

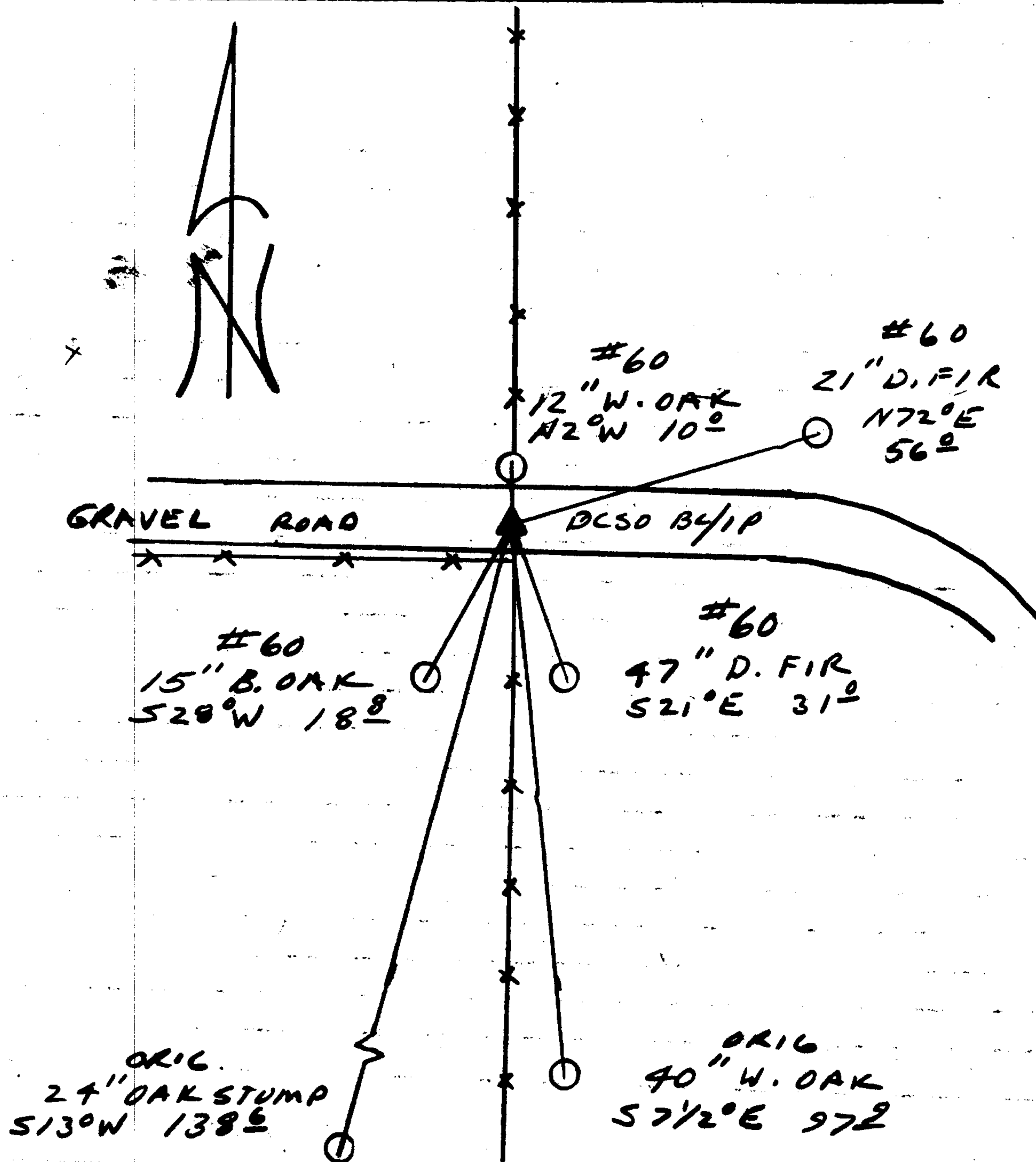
T225

OFFICE 1990

New Accessories

NONE NEEDED

Sketch of Monument, Accessories, and General Area



Location & Comments

CORNER LIES IN MIDDLE OF OLD GRAVEL ROAD AT NORTH - SOUTH FENCE CROSSING

Comp. Declin. 18° E
 Agency D.C.S.O.
 Party Chief RANDALL W SMITH
 Notekeeper Randall W Smith
 Witnesses STEPHEN J FLAUSE

Address

Surveyor's Seal

REGISTERED
PROFESSIONAL
LAND SURVEYOR

Randall W Smith

OREGON
JULY 25, 1990
RANDALL W. SMITH
2469