

GOVERNMENT CORNER RESTORATION FORM

FILED
Date: 12/10/94 by: BC
This survey consists of:

Township 27 S Range 5 W Sec. 11 County DOUGLAS

State OR Date 6-21-94 No.

Map:
Narrative:
Corner Rpt: CS 64/52

Corner Designation

1/4 S 11 | S 12

DOUGLAS COUNTY SURVEYOR

- Condition Report Only
- Not Found
- Renewed
- Unrecorded
- Surveyed In
- Referenced Out

Previous Renewals 1966 POWELL PI# 600540

Monument(s) Found: (Condition and Source)

2 1/2" DIA BRASS CAP ON A 1 1/2" O.D. IRON PIPE, PROTRUDES 15" ABOVE GROUND. (1966)

COUNTY SURVEYORS OFFICE
T 27 S R 5 W

1/4 S 11 | S 12
1966

Accessories Found:

- 2 1/4" NOW 4 1/4" DIA W. OAK WITH A PREVIOUSLY OPENED BLAZE, NO SCRIBING OR BLAZES VISIBLE, BEARS N 16 1/2° E, 159.1 FT (AGREES WITH 1966 REC) - (ORIG REC N 16 1/2° E, 158.4 FT POSSIBLE DISTANCE TO BLAZE) OBT
- 9" NOW 11" DIA W. OAK WITH A FULLY HEALED DOUBLE BLAZE, BEARS N 79 1/2° W, 88.0 FT (REC N 77° W, 88.6 FT) 1966
- 12" NOW 16" DIA, W. OAK WITH A FULLY HEALED DOUBLE BLAZE BEARS N 1° E, 142.3 FT. (REC N 4° E, 143.8 FT) 1966

RENEWAL

Monument Set (Procedure and Description)

Monument Detail

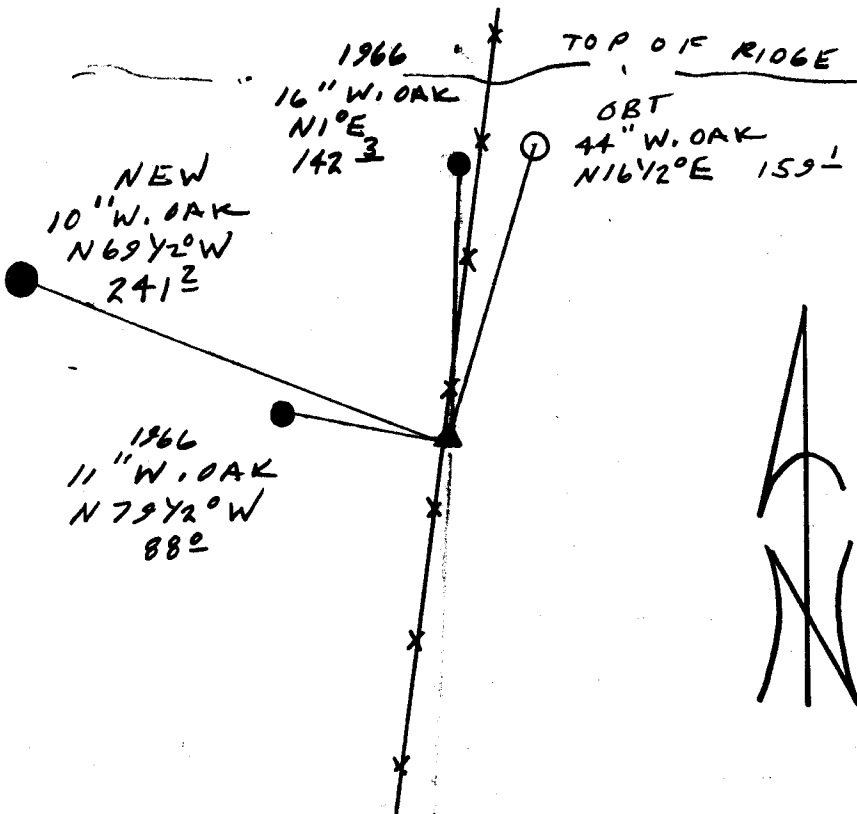
NONE

N/A

New Accessories

10" DIA. W. OAK DOUBLE BLAZED AND SCRIBED "YASICS BT"
BEARS $N 69 \frac{1}{2}^{\circ} W$, 241.2 FT

Sketch of Monument, Accessories, and General Area



Location & Comments

CORNER LIES 2.6 FT EAST OF A NORTH - SOUTH RUNNING FENCE LINE APPROX 160 FT SOUTH OF TOP OF HILL OUR BRG'S TAKEN AWAY FROM FENCE BRG'S TAKEN AT FENCE AGREE WITH REC BRG'S IN 1966 TO RENEWAL TREES

Comp. Declin. $17 \frac{3}{4}^{\circ} E$
Agency DLSO
Party Chief RANDALL W SMITH
Notekeeper Randall W Smith
Witnesses STEPHEN T FRAUSE

Address

Surveyor's Seal

REGISTERED PROFESSIONAL LAND SURVEYOR

Randall W Smith
EXPIRES 12-31-94

OREGON
JULY 25, 1990
RANDALL W. SMITH
2469