

GOVERNMENT CORNER RESTORATION FORM

Date: 11/17/94 by: Per

Township 29S Range 6W Sec. 8 County DOUGLAS  
State OR Date 10-26-94 No.

This survey consists of:  
Map:  
Narrative:  
Corner Rpt: CS 64/52

Corner Designation

1/4 S 8 | 59

DOUGLAS COUNTY SURVEYOR

- Condition  Only
- Not Found
- Renewed
- Unrecorded
- Surveyed In
- Referenced Out

P.I. # 300540

Previous Renewals 1917 M13-71, 1954 DCSD, 1991 BLM

Monument(s) Found: (Condition and Source)

3 1/2" DIA. BLM BRASS CAP ON  
2 1/2" OD IRON PIPE, 6" BELOW  
GROUND (1991 BLM)

DCSD BC/IP ~~1954~~ 1954 SURVEY  
BEARS N 89 3/4° E, 46.2 FT  
FROM BLM BC/IP  
(SEE BACK PAGE)

U.S. DEPT. OF THE INTERIOR

T29S R6W

1/4

S 8 | 59

1991

BUR. OF LAND MANAGEMENT

Accessories Found:

BRG + DIST FROM 1991 BLM BC/IP

- PPL POWER POLE # B17944 BEARS N 32° E, 144.9 FT TO OUTSIDE EDGE OF POWER POLE FACING CORNER, 145.5 TO CENTER OF POWER POLE (1991 BLM)
- 47" DIA. W. OAK WITH A PREVIOUSLY OPENED BLAZE, BEARS S 65 1/4° E, 158.1 FT 1954 DCSD BT (NOTE 'BT TO BE CUT IN NEAR FUTURE, STUMP WILL REMAIN)
- 1954 DCSD BC/IP BEAR N 89 3/4° E, 46.2 FT (AGREES WITH 1991 BLM RECORD)

NOTE:

Monument Set (Procedure and Description)

Monument Detail

A 2 1/2" DIA. BRASS CAP ON A  
 1 1/2" O.D. IRON PIPE FLUSH WITH GROUND  
 DCSO 1954 BC/PP WAS FOUND BEING  
 ERRONEOUSLY SET BY 1991  
 BLM SURVEY. WE ADD THE  
 MARKS "VOID DCSO". (NOTE  
 PROPERTY OWNER UNWILLING TO HAVE  
 BRASS CAP REMOVED FROM IRON  
 PIPE.)

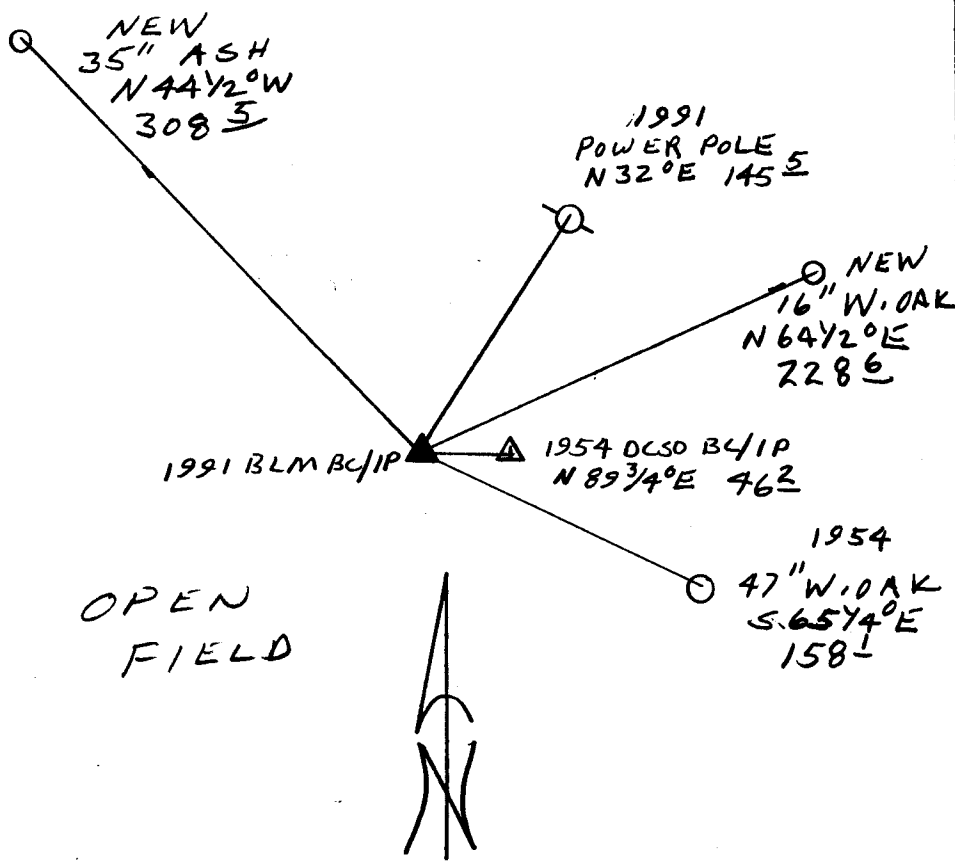
SOUTH EAST BT FROM 1954 REN.  
 AGREES WITH RECORD, NORTH  
 EAST BT NOW GONE

COUNTY SURVEYORS  
 T 29S R 6W  
 1/4 S  
 8 | 9  
 VOID DCSO  
 1954  
 OFFICE

New Accessories BRG + DIST TAKEN FROM 1991 BLM BC/IP  
 16" DIA. W. OAK DOUBLE BLAZED AND SCRIBED "1/4 S 9 CS BT"  
 BEARS N 64 1/2° E, 228.6 FT

35" DIA. ASH DOUBLE BLAZED AND SCRIBED "1/4 S 8 CS BT"  
 BEARS N 44 1/2° W, 308.5 FT

Sketch of Monument, Accessories, and General Area



Location & Comments

Comp. Declin. 17 3/4° E  
 Agency DCSO  
 Party Chief RANDALL W. SMITH  
 Notekeeper *[Signature]*  
 Witnesses STEPHEN J. FLAUSE

Address

Surveyor's Seal

REGISTERED  
 PROFESSIONAL  
 LAND SURVEYOR

*Randall W. Smith*  
 EXPIRES 12-31-94

OREGON  
 JULY 25, 1990  
 RANDALL W. SMITH  
 2489