

GOVERNMENT CORNER RESTORATION FORM

FILED

Date: 8/17/94 By: PC

Township 32S Range 5W Sec. 22 County DOUGLAS

This survey consists

State OK Date 7-13-94 No.

Map: Narrative: Corner Rpt: S 64/52

Corner Designation

1/4 S 22 | S 23

DOUGLAS COUNTY SURVEYOR

- Condition
- Not Found
- Renewed
- Unrecorded
- Surveyed In
- Referenced Out

Previous Renewals #97, #206, 1983 BLM

Monument(s) Found: (Condition and Source)

3/4" BRASS CAP ON A 2 1/2" O.D. IRON PIPE PROTRUDING 5" ABOVE GROUND (1983 BLM)

U.S. DEPT. OF THE INTERIOR T 32S R 5W

1/4

S 22 | S 23 1983

BUR. OF LAND MANAGEMENT

Accessories Found:

16" W. OAK NOW 32" DIA. B. OAK WITH A FULLY HEALED SINGLE BLAZE, BEARS N 63° W, 46.5 FT (AGREES WITH REC) REN # 97

18" BALM NOW 36" DIA 15 FT HIGH COTTONWOOD STUMP WITH A FULLY HEALED BLAZE, BEARS S 82° E, 115.5 FT (AGREES WITH REC) TO BE CUT DOWN TO GROUND IN NEAR FUTURE REN # 97

RENEWAL

Monument Set (Procedure and Description)

Monument Detail

NONE

N/A

New Accessories

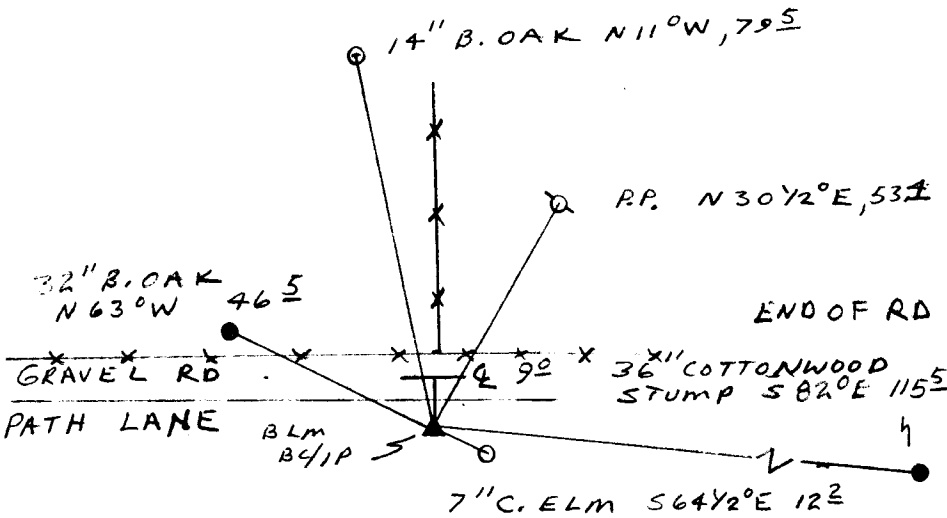
7" DIA. CHINESE ELM DOUBLE BLAZED AND SCRIBED "X BT"
BEARS S 64 1/2° E, 12.2 FT

POWER POLE NUMBER "E 643", BEARS N 30 1/2° E, 53.4 FT

14" DIA. B. OAK DOUBLE BLAZED AND SCRIBED "1/4 S 22 CS BT",
BEARS N 11° W, 79.5 FT

Sketch of Monument, Accessories, and General Area

Location & Comments



HOUSE



Comp. Declin. 173/4° E
 Agency DCSO
 Party Chief RANDALL W SMITH
 Notekeeper Randall W Smith
 Witnesses STEPHEN J LAUSE

Address _____

Surveyor's Seal

REGISTERED
 PROFESSIONAL
 LAND SURVEYOR

Randall W Smith
 EXPIRES 12-31-94

OREGON
 JULY 25, 1990
 RANDALL W. SMITH
 2489