

GOVERNMENT CORNER RESTORATION FORM

Date: 8/16/94 By: AS

Township 26S Range 7W Sec. 1

County DOUGLAS This survey consists of:

State OR Date 8-3-94 No. \_\_\_\_\_

Map: \_\_\_\_\_

Narrative: \_\_\_\_\_

Corner Rpt: CS 04/52

Corner Designation

1/4 S2 | S1

DOUGLAS COUNTY  
SURVEYOR

Condition: Report Only

Not Found

Renewed

Unrecorded

Surveyed In

Referenced Out

Previous Renewals 1966 DCSSO P.I. # 600640

MONUMENT DETAIL

Monument(s) Found: (Condition and Source)

2 1/2" BRASS CAP ON A 1 1/2" O.D.  
IRON PIPE PROTRUDING 7"  
ABOVE GROUND. (1966 DCSSO)

COUNTY SURVEYORS

T 26S

1/4 S2 | S1

R 7W

1966

OFFICE

Accessories Found:

16" NOW 34" DIA DOWN W. OAK WITH A PREVIOUSLY OPENED  
BLAZE, NO SCRIBING VISIBLE, ROOT HOLE BEARS S70°W,  
74.6 FT (AGREES WITH RECORD) ORIG. BT

18" NOW 29" DIA. D. FIR WITH A FULLY HEALED SINGLE  
BLAZE, BEARS N61°E, 6.7 FT (AGREES WITH REC)  
1966 DCSSO (TREE TO BE CUT IN NEAR FUTURE)

16" NOW 24" DIA 2 FT HIGH B. OAK STUMP WITH  
SCRIBING FOUND "BT" BEARS N23°W, 7.1 FT  
(AGREES WITH REC.) 1966 DCSSO

Monument Set (Procedure and Description)

Monument Detail

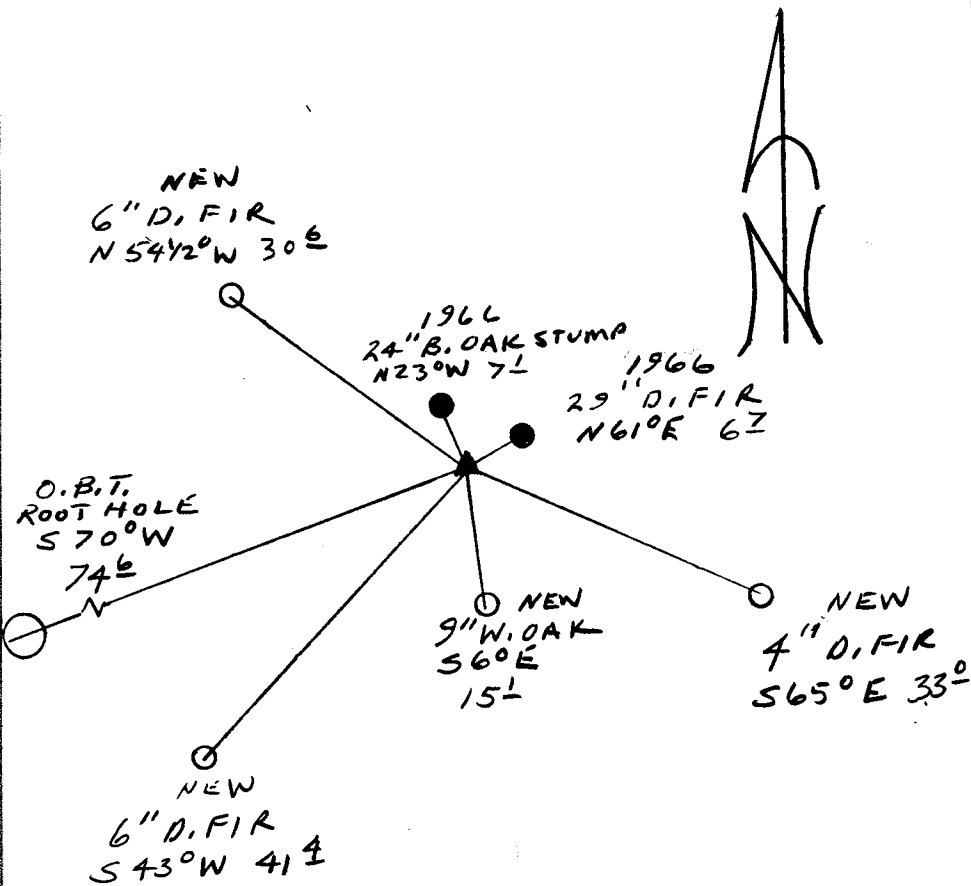
NONE

N/A

New Accessories

- 6" DIA. D. FIR DOUBLE BLAZED AND SCRIBED "1/4 S2 CS BT" BEARS N 54 1/2° W, 30.6 FT.
- 9" DIA. W. OAK DOUBLE BLAZED AND SCRIBED "1/4 S1 CS BT" BASE OF SCRIBED TRUNK BEARS S 6° E, 15.1 FT
- 6" DIA. D. FIR DOUBLE BLAZED AND SCRIBED "1/4 S2 CS BT" BEARS S 43° W, 41.4 FT.
- 4" DIA. D. FIR DOUBLE BLAZED AND SCRIBED "X BT" BEARS S 65° E, 33.0 FT

Sketch of Monument, Accessories, and General Area



Location & Comments

Comp. Declin. 17 3/4° E  
 Agency DCSO  
 Party Chief RANDALL W SMITH  
 Notekeeper Randall W Smith  
 Witnesses STEPHEN J FLAUSE

Address

Surveyor's Seal

REGISTERED  
 PROFESSIONAL  
 LAND SURVEYOR

*Randall W Smith*  
 EXPIRES 12-31-94

OREGON  
 JULY 25, 1990  
 RANDALL W. SMITH  
 2450