

GOVERNMENT CORNER RESTORATION FORM

Date: 6-22-94 By: JP

This survey consists of:

Township 28 S Range 7 1/2 Sec. 7 County DOUGLAS

State OR Date 5-23-94 No. _____

Map: _____
Narrative: _____
Corner Rpt: C.S. 64/51

Corner Designation

1/4
S12 | S7

PT # 100540

Previous Renewals 1924 MENSH, 1961 BYRON

Monument(s) Found: (Condition and Source)

2 1/2" BRASS CAP ON A 1" O.D. IRON
PIPE PROTRUDING 8" ABOVE
GROUND (1924)

DOUGLAS COUNTY

- Condition Report Only
- Not Found
- Renewed
- Unrecorded
- Surveyed In
- Referenced Out

MONUMENT DETAIL

GENERA LAND OFFICE

1/4

S12 | S7
R 7 1/2

1924
SURVEY

Accessories Found:

10" NOW 19" DIA D.FIR WITH A FULLY HEALED SINGLE
BLAZE, BEARS S 59° E, 9.9 FT (AGREES WITH REC.) 1924

8" NOW 12" DIA 4 FT HIGH D.FIR STUMP WITH A
FULLY HEALED SINGLE BLAZE, BEARS S 31° W, 7.3 FT
(AGREES WITH REC) 1924

12" NOW 17" DIA D.FIR WITH A FULLY HEALED DOUBLE
BLAZE, BEARS N 5° W, 14.2 FT (AGREES WITH
REC) 1961

Monument Set (Procedure and Description)

Monument Detail

NONE

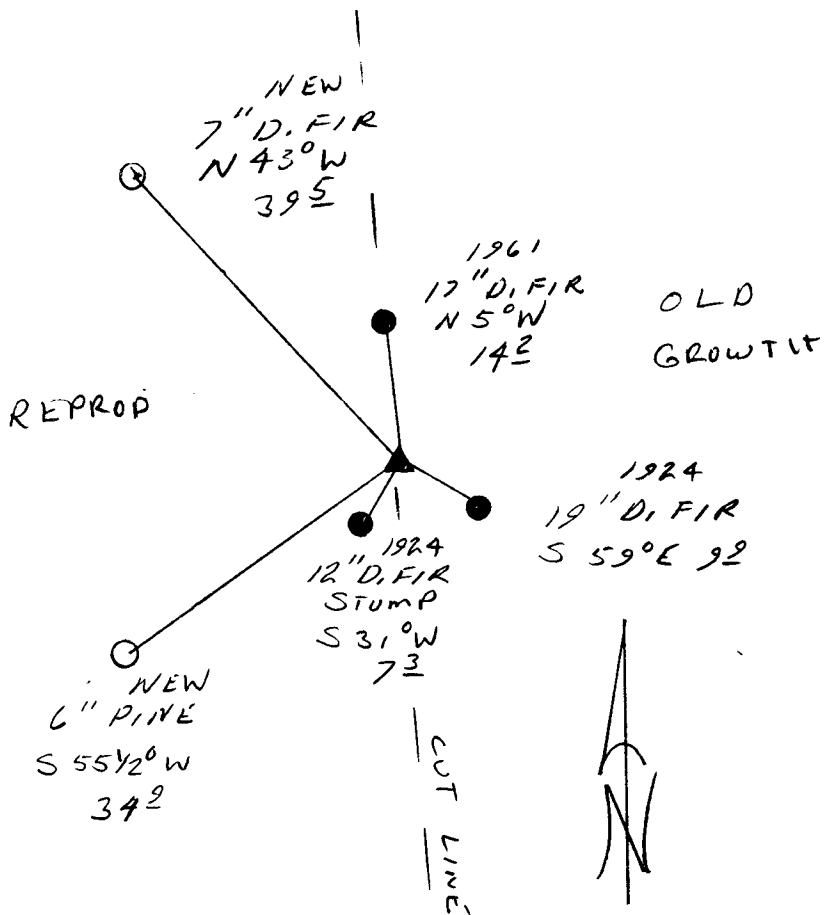
N/A

New Accessories

6" DIA PINE DOUBLE BLAZED AND SCRIBED "1/4 S 12 CS BT"
BEARS S 55 1/2° W, 34.9 FT

7" DIA P. FIR DOUBLE BLAZED AND SCRIBED "1/4 S 12 CS BT"
BEARS N 43° W, 39.5 FT

Sketch of Monument, Accessories, and General Area



Location & Comments

Comp. Declin. 17 3/4° E
 Agency DCSO
 Party Chief RANDALL W SMITH
 Notekeeper Charles W Smith
 Witnesses STEPHEN J. FLAUSCH

Address

Surveyor's Seal
 REGISTERED
 PROFESSIONAL
 LAND SURVEYOR
Randall W Smith
 EXPIRES 12-31-94
 OREGON
 JULY 25 1990
 RANDALL W SMITH
 2468