



RENEWAL

ACCESSORIES FOUND

Monument Set (Procedure and Description)

2 3/8" DIA BRASS CAP ON A 1 3/8" O.D  
BY 32" LONG IRON PIPE, PROTRUDES  
1" ABOVE GROUND BEARS  
N 39 1/2° W, 18.0 FT FROM I.P.

Monument Detail

DOUGLAS COUNTY SURVEYORS

BO 1

SEC COR

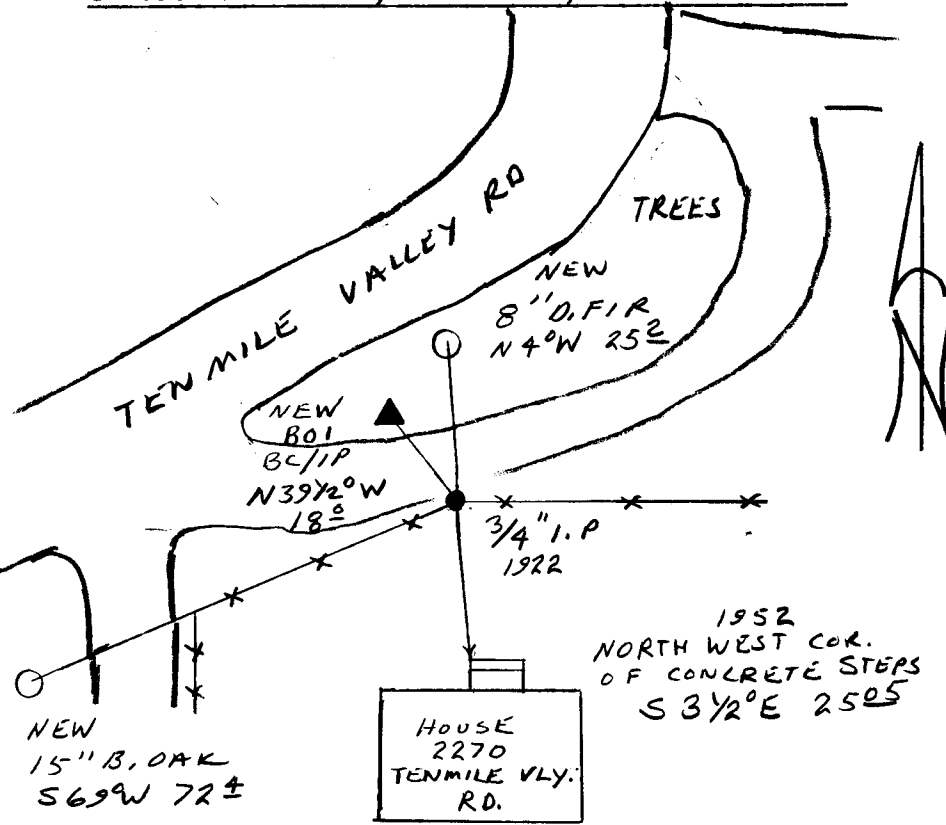
BEARS  
S 39 1/2° E 18 FT  
1994  
OFFICE

New Accessories

15" B. OAK DOUBLE BLAZED AND SCRIBED "T285 R7W S31 CS BT"  
BEARS S 69° W, 72.4 FT

8" D. FIR DOUBLE BLAZED AND SCRIBED "T285 R7W S30 CS BT"  
BEARS N 4° W, 25.2 FT.

Sketch of Monument, Accessories, and General Area



Location & Comments

Comp. Declin. 17 3/4° E  
Agency DCSO  
Party Chief RANDALL W SMITH  
Notekeeper Randall W Smith  
Witnesses STEPHEN J FLAUSE

Address

Surveyor's Seal  
REGISTERED  
PROFESSIONAL  
LAND SURVEYOR

*Randall W Smith*  
EXPIRES 12-31-94

OREGON  
JULY 25, 1990  
RANDALL W. SMITH  
2469