

GOVERNMENT CORNER RESTORATION FORM

Date: 6-17-94 By: JC

This survey consists of:

Township 28S Range 7W Sec. 29 County DOUGLAS Map: \_\_\_\_\_  
State OR Date 5-25-94 No. \_\_\_\_\_ Narrative: \_\_\_\_\_  
Corner Rpt: 64/51

Corner Designation

SW COR  
DLC 54

DOUGLAS COUNTY

SURVEYOR

- Condition Report Only
- Not Found
- Renewed
- Unrecorded
- Surveyed In
- Referenced Out

Previous Renewals 1922 STEWART, 1957 BYRON

Monument(s) Found: (Condition and Source)

1/2" I. D. IRON PIPE, 2" BELOW GROUND. (1922)

N/A

Accessories Found:

12" NOW 42" D.I.A. W. OAK WITH A FULLY HEALED DOUBLE BLAZE, BEARS N 30° E, 54.0 FT CAGREES WITH 1957 REC) OBT

18" NOW 20" D.I.A 2 FT HIGH ROTTEN OAK STUMP WITH A POSSIBLE LOW BLAZE, BEARS N 5 1/2° E, 136.9 FT CAGREES WITH 1957 REC) 1922

6" NOW 20" D.I.A. W. OAK WITH A FULLY HEALED DOUBLE BLAZE, BEARS S 82° E, 37.9 FT CAGREES WITH REC.) 1957

RENEWAL

Monument Set (Procedure and Description)

2 3/8" DIA BRASS CAP ON A 1 3/8" O.D. BY  
 32" LONG IRON PIPE IS SET AT FOR  
 POSITION OF 1/2" I.P., BC/IP PROTRUDES  
 6" ABOVE. 1/2" I.P. MEASURES 21"  
 ALONG IS SET ALONG NORTH EDGE  
 OF BC/IP, FLUSH WITH GROUND.

Monument Detail

DOUGLAS COUNTY SURVEYORS

T 28 S  
 DLC R  
 54 7  
 W

SW COR

1994  
 OFFICE

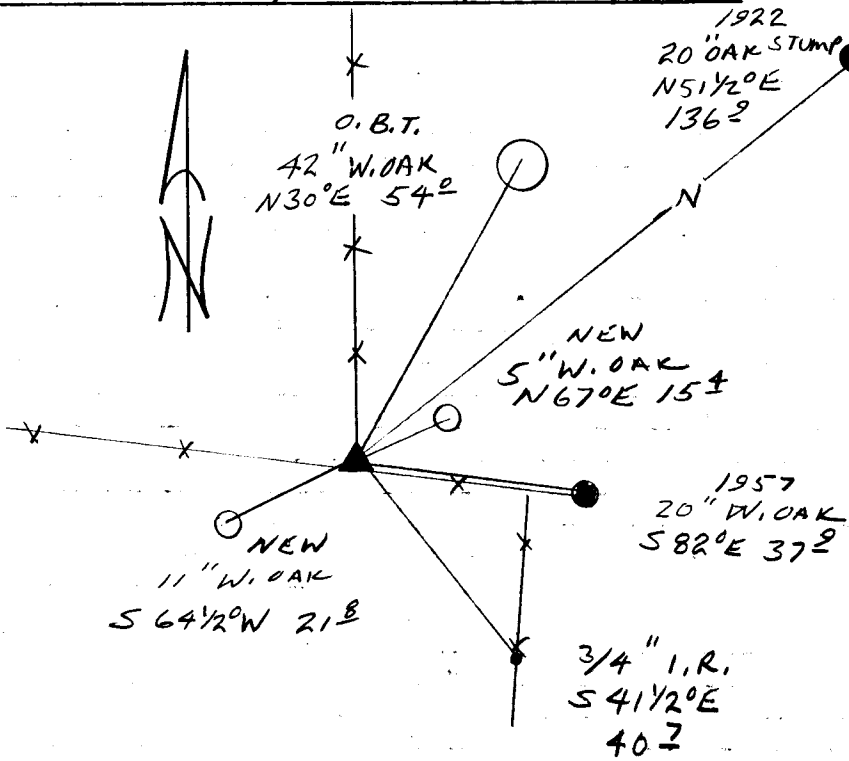
New Accessories

11" DIA W. OAK DOUBLE BLAZED AND SCRIBED "SW DLC 54 CS BT"  
 BEARS S 64 1/2° W, 21.8 FT

5" DIA. W. OAK DOUBLE BLAZED AND SCRIBED "SW DLC 54 CS BT"  
 BEARS N 67° E, 15.4 FT

3/4" I.R. BEARS S 41 1/2° E 40.7 FT

Sketch of Monument, Accessories, and General Area



Location & Comments

CORNER LIES AT THE  
 INTERSECTION OF A EASTERLY  
 WESTERLY AND NORTHERLY  
 RUNNING FENCE LINES

Comp. Declin. 17 3/4° E  
 Agency DCSO  
 Party Chief RANDALL W SMITH  
 Notekeeper [Signature]  
 Witnesses STEPHEN J FRAUSE

Address

Surveyor's Seal

REGISTERED  
 PROFESSIONAL  
 LAND SURVEYOR

[Signature]  
 EXPIRES 12-31-94

OREGON  
 JULY 25, 1990  
 RANDALL W. SMITH  
 2469