

GOVERNMENT CORNER RESTORATION FORM

Date: 6-15-94 By: JP
This survey consists of:

Township 27S Range 5W Sec. 13 County DOUGLAS Map: _____
State OR Date 5-5-94 No. _____
Narrative: _____
Corner Rpt: C.S. 64/51

Corner Designation

1/4 S14 | S13

PI # 660448

Previous Renewals 1939 BBE, 1966 JMP

Monument(s) Found: (Condition and Source)

2 1/2" BRASS CAP ON A 1 1/2"
OD IRON PIPE PROTRUDING
10" ABOVE GROUND. (1966)

3/4" I.D. IRON PIPE IS FOUND
FLUSH WITH GROUND ALONG
NORTH EDGE OF BC/1P. (1939)

Accessories Found:

14" NOW ROTTED AND DOWN OAK FOUND NEAR RECORD
BEARING AND DISTANCE (S68°E 104.2 FT) NO BLAZES
OR SCRIBING VISIBLE ORIG BT

9" NOW 14" DIA W. OAK WITH A HEALED PREVIOUSLY
OPENED BLAZE WE REOPEN AND FIND AXE MARKS,
BEARS N 18°E, 33.6 FT (REC N 10°E 33.6 FT) 1939

8" NOW 12" DIA. W. OAK WITH A FULLY HEALED DOUBLE
BLAZE, BEARS N 18 1/2° W, 55.2 FT (AGREES WITH REC)
1966

DOUGLAS COUNTY

SURVEYOR

Condition Report Only

Not Found

Renewed

Unrecorded

Surveyed In

Referenced Out

MONUMENT DETAIL

COUNTY SURVEYORS OFFICE

T27S R5W

1/4 S14 | S13

1966

Monument Set (Procedure and Description)

Monument Detail

NONE

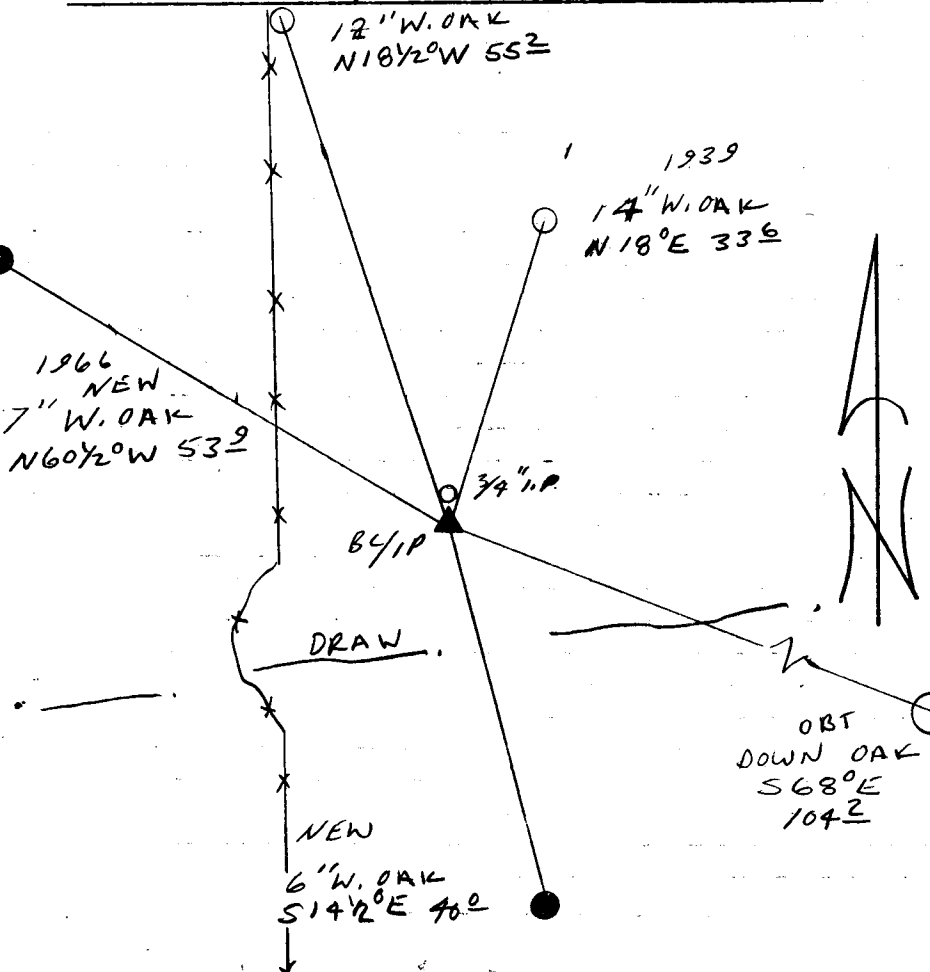
N/A

New Accessories

6" DIA. W. OAK DOUBLE BLAZED AND SCRIBED "Y4S13CS BT"
BEARS S 14 1/2° E 40.0 FT.

7" DIA. W. OAK DOUBLE BLAZED AND SCRIBED "Y4S14CS BT"
BEARS N 60 1/2° W, 53.9 FT

Sketch of Monument, Accessories, and General Area



Location & Comments

CORNER LIES ON THE
NORTH EDGE OF A
NORTHEAST RUNNING DRAW
22 1/2 FT EAST OF A
NORTH-SOUTH FENCE LINE

Comp. Declin. 17 3/4° E
Agency DC SO
Party Chief RANDALL W SMITH
Notekeeper [Signature]
Witnesses STEPHEN J FLAUSE

Address

Surveyor's Seal

REGISTERED
PROFESSIONAL
LAND SURVEYOR

Randall W Smith
EXPIRE 12-31-94

OREGON
JULY 25, 1990
RANDALL W SMITH
2469