

GOVERNMENT CORNER RESTORATION FORM

Date: 6-15-94 By: JP

This survey consists of:

Township 27S Range 5W Sec. 13 County DOUGLAS Map: \_\_\_\_\_

State OR Date 5-24-94 No. \_\_\_\_\_ Narrative: \_\_\_\_\_

Corner Rpt: C.S. 64/51

Corner Designation

$\frac{1}{4}$  S13  
S24

PI # 640400

DOUGLAS COUNTY

Condition Report Only

Not Found

Renewed

Unrecorded

Surveyed In

Referred Out

Previous Renewals 1967 BAUGHMAN, 1988 RALEIGH

MONUMENT DETAIL

Monument(s) Found: (Condition and Source)

2 1/2" BRASS CAP ON 1 1/2" O.D.  
IRON, PROTRUDES 14" ABOVE  
GROUND. BC/IP IS BENT.  
10" EAST OF PLUMB. (1967)

T 27S R 5W

$\frac{1}{4}$

13 | 24

1967 LS 536

Accessories Found:

1" IRON BAR PROTRUDING 6" ABOVE GROUND  
BEARS N 94° E, 24.59 FT (AGREYS WITH RECORD)  
(1988 RM 3-70A+B)

RENEWAL

Monument Detail

Monument Set (Procedure and Description)

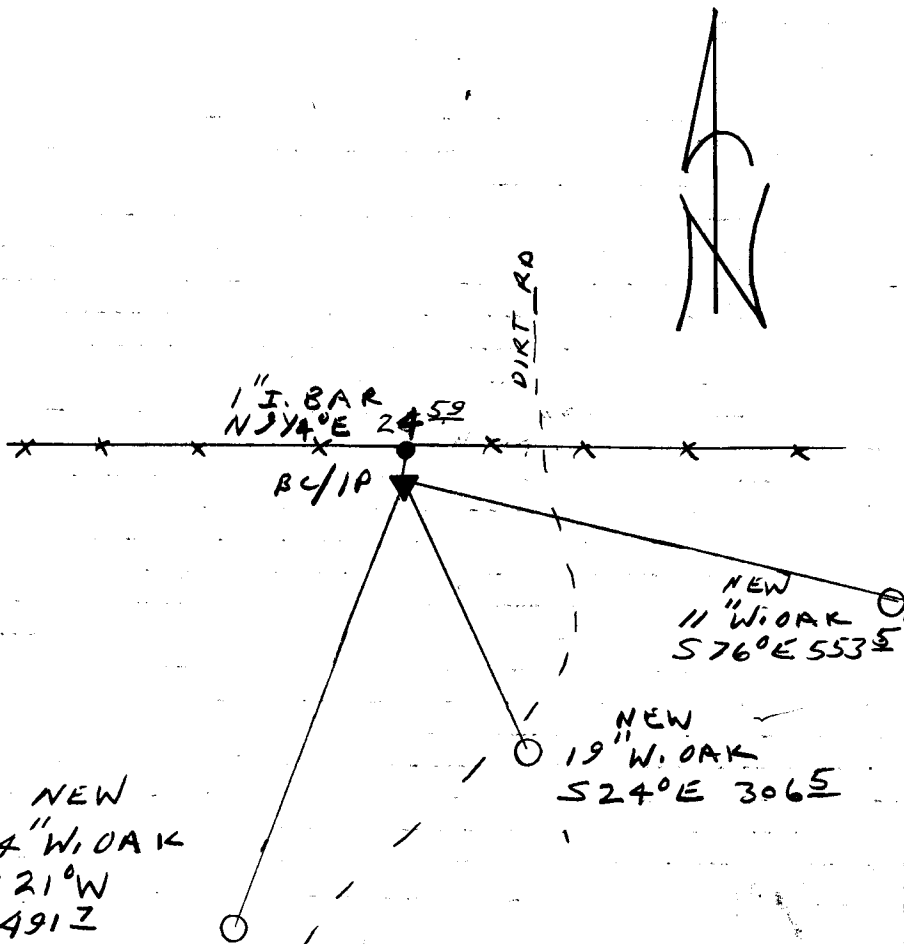
PLUMB POSITION OF BC/IP IS REFERENCED, BC/IP REMOVED, MEASURES 3/6" LONG. BC/IP STRAIGHTENED AND RETURNED TO REFERENCED POSITION, PROTRUDES 7" ABOVE GROUND

N/A

New Accessories

- 19" DIA. W. OAK DOUBLE BLAZED AND SCRIBED "1/4 S 24 CS BT" BEARS S 24° E, 306.5 FT.
- 14" DIA. W. OAK DOUBLE BLAZED AND SCRIBED "1/4 S 24 CS BT" BEAR S 21° W, 491.2 FT
- 11" DIA. W. OAK DOUBLE BLAZED AND SCRIBED "1/4 S 24 CS BT" BEARS S 76° E, 553.5 FT

Sketch of Monument, Accessories, and General Area



Location & Comments

CORNER LIES 25 FT SOUTH OF A EAST-WEST FENCE LINE APPROX 50 FT WEST OF A DIRT ROAD. CORNER LIES UNDER POWER LINES, LOCAL MAGNETIC ATTRACTION IS 4° RIGHT. AS DETERMINED BY STAFF COMPASS AWAY FROM POWER LINES  
 Comp. Declin. 173/4 E  
 Agency DCS  
 Party Chief RANDALL W. SMITH  
 Notekeeper Randall W. Smith  
 Witnesses STEPHEN J. FLAUS

Address

Surveyor's Seal

REGISTERED  
 PROFESSIONAL  
 LAND SURVEYOR

Randall W. Smith  
 EXPIRES 12-31-94

OREGON  
 JULY 25, 1990  
 RANDALL W. SMITH  
 2489