

GOVERNMENT CORNER RESTORATION FORM

Date: 6-15-94 By: JP  
This survey consists of:

Township 27S Range 5W Sec. 13 County DOUGLAS Map: \_\_\_\_\_  
State OR Date 5-2-94 No. \_\_\_\_\_  
Narrative: \_\_\_\_\_  
Corner Rpt: C.S. 64/51

Corner Designation

S14 | S13  
S23 | S24

DOUGLAS COUNTY  
SURVEYOR

- Condition Report Only
- Not Found
- Renewed
- Unrecorded
- Surveyed In
- Referenced Out

MONUMENT DETAIL

Previous Renewals 1967 BAUGHMAN, 1974 GARRETT

Monument(s) Found: (Condition and Source)

2 1/2" DIA. BRASS CAP ON A 1 1/2" O.D. IRON PIPE PROTRUDING 12" ABOVE GROUND. (1974 GARRETT)

1" IRON ROD PROTRUDING 10" ABOVE GROUND (1967 BAUGHMAN)

1. R BEARS N 0 1/2° W, 51.76 FT FROM B/LIP. (AGREES WITH REC)

T 27S R 5W

14 | 13

23 | 24

RPLS 544

1974

Accessories Found:

18" NOW 27" DIA. W. OAK WITH A FULLY HEALED BLAZE BEARS N 4 1/4° E, 128.2 FT (AGREES WITH 1974 GARRETT RECORD) BT SCRIBED IN 1967 BY BAUGHMAN.

16" W. OAK NOW ROOTHOLE BEARS N 37 3/4° W, 171.2 FT (AGREES WITH 1974 GARRETT RECORD). BT SCRIBED IN 1967 BY BAUGHMAN

Monument Set (Procedure and Description)

Monument Detail

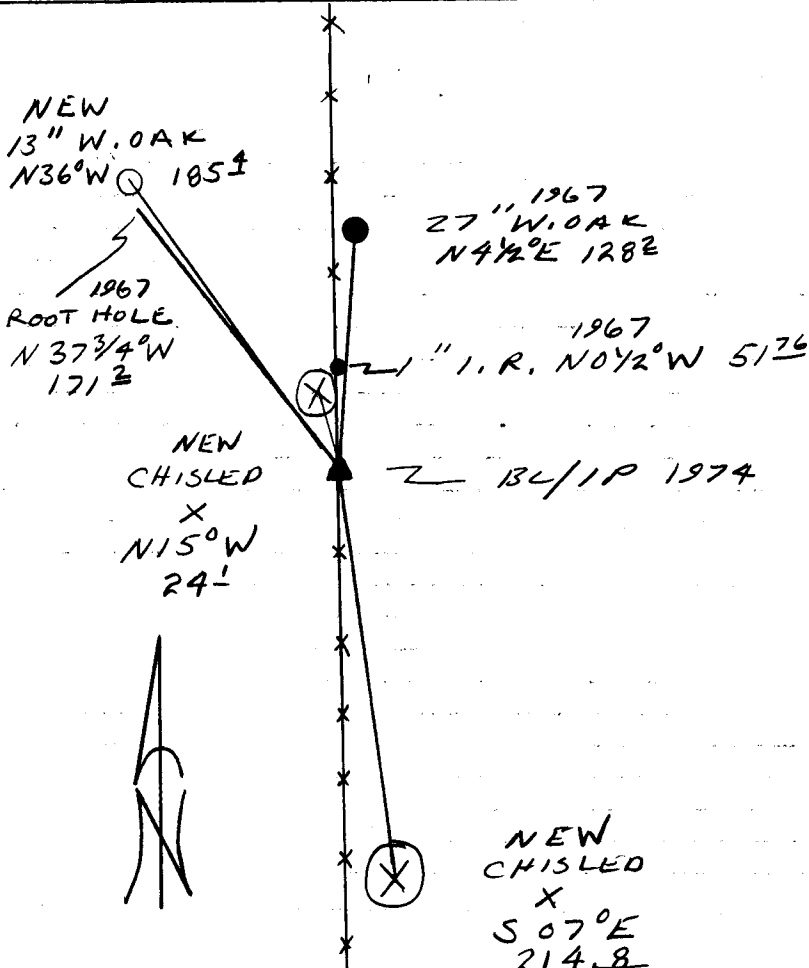
NONE

N/A

New Accessories

- 13" DIA. W. OAK DOUBLE BLAZED AND SCRIBED "T275 R5W S14 CS BT" BEARS N 36°W, 185.4 FT
- 2' X 3' X 3' HIGH CONGLOMERATE ROCK OUTCROP WITH AN 8" CHISLED "X" ON TOP, "X" BEARS N 15°W, 24.1 FT.
- 6' X 6' X 4' HIGH CONGLOMERATE ROCK OUTCROP WITH A 6" CHISLED "X" ON TOP, "X" BEARS S 07°E, 214.8 FT.

Sketch of Monument, Accessories, and General Area



Location & Comments

CORNER LIES 0.5 FT EAST OF FENCE LINE

Comp. Declin. 173/4°E  
 Agency DCSG  
 Party Chief RANDALL W SMITH  
 Notekeeper Randall W Smith  
 Witnesses STEPHEN J. FLAUSE

Address

Surveyor's Seal

REGISTERED PROFESSIONAL LAND SURVEYOR

*Randall W Smith*

EXPIRES 12-31-94

OREGON  
 JULY 25, 1990  
 RANDALL W. SMITH  
 2489