

GOVERNMENT CORNER RESTORATION FORM

Date: 6-14-94 By: JP

This survey consists of:

Township 27 S Range 5W Sec. 11 County DOUGLAS

Map: _____

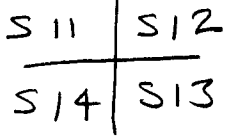
State OR Date 5-26-94

Narrative: _____

No. _____

Corner Rpt: 64/51

Corner Designation



DOUGLAS COUNTY SURVEYOR

- _____ Condition Report Only
- _____ Not Found
- Renewed
- _____ Unrecorded
- _____ Surveyed In
- _____ Referenced Out

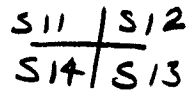
Previous Renewals 1939 BBI, 1966 POWELL

Monument(s) Found: (Condition and Source)

2 1/2" DIA BRASS CAP ON A 1 1/2" O.D. IRON PIPE PROTRUDING 10" ABOVE A 2 FT DIA. MOUND OF STONE LARGE STONE ALONG NORTH SIDE OF RC/IP LAYING ON SIDE MEASURES 24X12"X6" MARKED WITH A "T" ON TOP AND 11 12 13 14 ON FOUR SIDES AND NOTCHES AS DESCRIBED IN 1939 REN., RC/IP FROM 1966 REN.

COUNTY SURVEYORS OFFICE

T 27 S R 5 W



1966

Accessories Found:

15" NOW 29" DIA W. OAK WITH A FULLY HEALED BLAZE, BEARS S 60° E, 292.9 (REC S 61 1/2° E, 297.0 FT. DIST. GOOD FOR A SLOPE DISTANCE). OBT

6" NOW 17" DIA W. OAK WITH A FULLY HEALED BLAZE, BEARS S 39° W, 10.0 FT (REC S 37° W 10.0 FT) 1939

14" NOW 24" DIA W. OAK WITH A FULLY HEALED BLAZE, BEARS N 28 1/4° W, 42.2 FT (REC. N 30 1/2° W, 43.0 FT) 1939

20" NOW 29" DIA W. OAK WITH A FULLY HEALED BLAZE, BEARS N 46 3/4° E, 82.0 FT (REC N 45° E 82.3 FT) 1939

RENEWAL

Monument Set (Procedure and Description)

Monument Detail

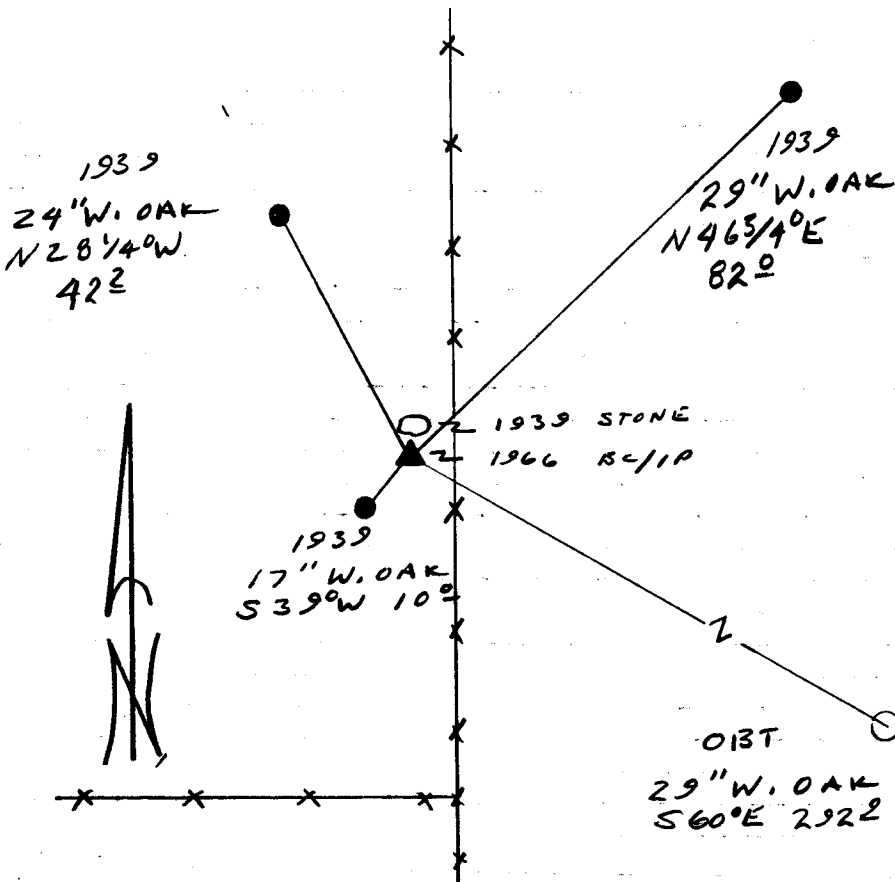
MOUND OF STONKS REPOSITIONED
AROUND BC/IP 1939 CORNER
STONE SET ALONG NORTH EDGE
OF BC/IP WITH MARKS FACING
CORRESPONDING SECTIONS

N/A

New Accessories

NONE

Sketch of Monument, Accessories, and General Area



Location & Comments

CORNER LIES NEAR THE
INTERSECTION OF A NORTH-
SOUTH AND WEST RUNNING
FENCE LINE 3 FT
WEST OF N-S FENCE LINE
AND 54 FT NORTH OF
A WEST FENCE LINE

Comp. Declin. 173/40E
Agency DCSO
Party Chief RANDALL W SMITH
Notekeeper Randall W Smith
Witnesses STEPHEN J FLAUS

Address

Surveyor's Seal

REGISTERED
PROFESSIONAL
LAND SURVEYOR

Randall W Smith
EXPIRES 12-31-94

OREGON
JULY 25, 1990
RANDALL W. SMITH
2489