

GOVERNMENT CORNER RESTORATION FORM

Date: 6-14-94 By: JP

This survey consists of:

Township 27S Range 5W Sec. 2 County DOUGLAS Map \_\_\_\_\_

State OR Date 4-20-94 No. \_\_\_\_\_ Corner Rpt: 64/51

Corner Designation

S3 | S2  
S10 | S11

DOUGLAS COUNTY SURVEYOR

- Condition Report Only
- Not Found
- Renewed
- Unrecorded
- Surveyed In
- Referenced Out

Previous Renewals 1967 BAUGHMAN

Monument(s) Found: (Condition and Source)

2 1/2" DIA BRASS CAP ON A 1 1/2" O.D. IRON PIPE PROTRUDES 12" ABOVE GROUND. (1967)

T 27S R 5W

L.S. 536  
10 | 3  
11 | 2  
1968

Accessories Found:

1967 BTS  
14" NOW 14" DIA. W. OAK WITH A FULLY HEALED SINGLE BLAZE, BEARS N 31° W 12.4 FT. (REC N 59° W 13.4 FT)

22" NOW 26" DIA. W. OAK WITH A FULLY HEALED SINGLE BLAZE, BEARS N 54 3/4° E, 41.7 FT (REC N 52° E, 43.3 FT, POSSIBLE SLOPE DIST.)

12" NOW 16" DIA. W. OAK WITH A FULLY HEALED SINGLE BLAZE, BEARS S 67° W, 34.0 FT (AGREES WITH REC)

6" NOW 8" DIA. W. OAK WITH A FULLY HEALED SINGLE BLAZE, BEARS S 71° E, 84.3 FT (REC S 71° E, 88.0 FT) BT IS IN A CLUSTER OF W. OAKS, BFG AND DISTANCE TAKEN TO CENTER OF SCRIBED TRUNK

50066

MAP FILE C.S. 64/51

Monument Set (Procedure and Description)

Monument Detail

N/A

N/A

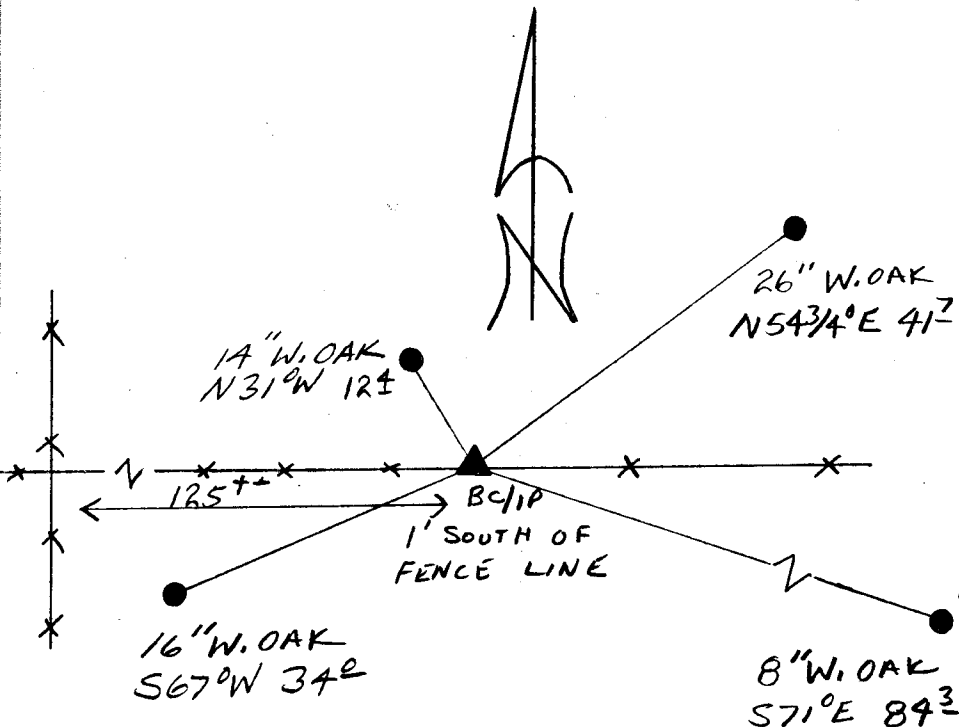
ORIGINAL LINE NOTES DENOTE  
MAGNETIC VARIANCES IN LINES  
LEAVING SECTION CORNER.

OUR BEARINGS TAKEN AWAY  
FROM FENCE LINE TO MINIMIZE  
FENCE LINE ATTRACTION.

New Accessories

NONE

Sketch of Monument, Accessories, and General Area



Location & Comments

CORNER IS APPROX 125'  
EAST OF A FOUR WAY  
FENCE CORNER AND  
1' SOUTH OF E-W FENCE  
ON A WESTERLY SLOPING  
HILL SIDE

ORIG. BT'S LOOKED FOR NONE  
FOUND.

Comp. Declin. 17 3/4° E  
Agency DCSO  
Party Chief RANDALL W. SMITH  
Notekeeper RANDALL W. SMITH  
Witnesses STEPHEN J. FLAUSK

Address

Surveyor's Seal