

GOVERNMENT CORNER RESTORATION FORM

Date: 6-2-94 By: JP
This survey consists of:
Map: _____
Narrative: _____
Corner Rpt: 64/51

Township 27S Range 4W Sec. 18

County DOUGLAS

State OR Date 4-27-94

No. _____

Corner Designation

1/4 513 | 518

P, # 700440

- Condition Report Only
- Not Found
- Renewed
- Unrecorded
- Surveyed In
- Referenced Out

MONUMENT DETAIL

Previous Renewals 1953 BB1, 1958 BYRON

Monument(s) Found: (Condition and Source)

2 1/2" BRASS CAP ON A 1 1/2"
O.D. IRON PIPE, PROTRUDES
5" ABOVE GROUND, IS BENT 6"
EASTERLY OF A PLUMB POSITION,
(1958 BYRON)

COUNTY SURVEYORS

1/4 COR

13 | 18

OFFICE

Accessories Found:

POWER POLE FROM 1958 REN. NOW GONE

FD PK NAIL INTO TOP CNT. OF BROKEN DOWN FENCE POST
PLUMB POSITION OF FENCE POST AND PK NAIL BEARS
N12°E, 248.0 FT. (AGREES WITH REC) (1958 REN)

27-4 120 440
27-5 700 440

C.S. File No. 64/51

RENEWAL

Monument Detail

Monument Set (Procedure and Description)

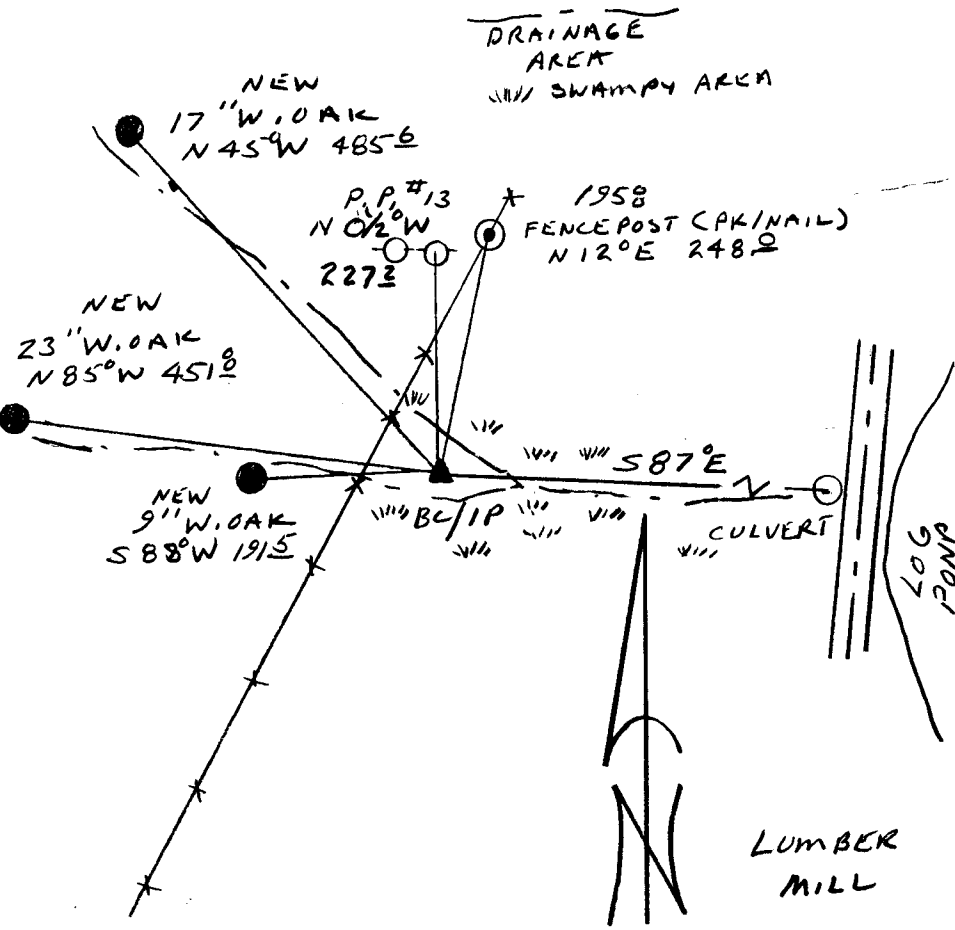
REFERENCED PLUMB POSITION OF BC/IP,
 BC/IP MEASURED 36" LONG, IS
 STRAIGHTENED AND RETURNED TO
 PLUMB POSITION, BC/IP PROTRUDED
 3" ABOVE GROUND.

N/A

New Accessories

- 9" W. OAK DOUBLE BLAZED AND SCRIBED "Y4S13CSBT" BEARS S 88° W, 191.5 FT
- 23" W. OAK DOUBLE BLAZED AND SCRIBED "Y4S13CSBT" BEARS N 85° W, 451.8 FT
- 17" W. OAK DOUBLE BLAZED AND SCRIBED "Y4S13CSBT" BEARS N 45° W, 485.6 FT
- EAST POWER POLE #32 BEARS N 1/2° W 227.2 FT
- CENTER OF CULVERT UNDER PRIVATE PAVED LUMBER MILL ACCESS ROAD BEARS S 87° E (CULVERT FEEDS LOG POND)

Sketch of Monument, Accessories, and General Area



Location & Comments

CORNER LIES IN "V" BETWEEN
 TWO NATURAL DRAINAGES
 WHICH FEED LOG POND.
 APPROX EAST 81 FT FROM
 A NE-SW FENCE LINE
 METAL WITNESS POST AND
 SIGN IS SET 1 FT EAST
 OF BC/IP

Comp. Declin. 17 3/4° E
 Agency D C S O
 Party Chief RANDALL W SMITH
 Notekeeper Randall W Smith
 Witnesses STEPHEN J FLAUSE

Address

Surveyor's Seal

REGISTERED
 PROFESSIONAL
 LAND SURVEYOR

Randall W Smith
 EXPIRES 12-31-94

OREGON
 JULY 15, 1990
 RANDALL W SMITH

LUMBER MILL