

GOVERNMENT CORNER RESTORATION FORM

Township 26S Range 5W Sec. 25 County DOUGLAS

Date: 6/1/94 By: JC

State OR Date 5-18-94 No. _____

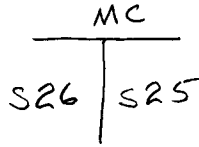
This survey consists of:

Map: _____

Narrative: _____

Corner Rpt: P-5 64/51

Corner Designation



PI # 600258

Previous Renewals 1956 BYRON, 1964 GODFREY

- DOUGLAS COUNTY
- Condition SURVEYOR
 - Not Found
 - Renewed
 - Unrecorded
 - Surveyed In
 - Referenced Out

MONUMENT DETAIL

Monument(s) Found: (Condition and Source)

2 1/2" DIA. BRASS CAP ON A 1 1/2" O.D. IRON PIPE. PROTRUS 19" ABOVE GROUND. TOP IS BENT 16" NORTH OF PLUMB (1956)

COUNTY SURVEYORS

T26S R 5W

MC

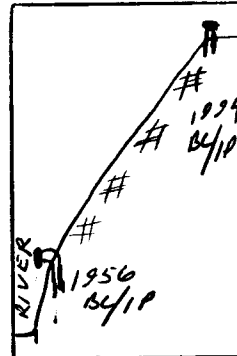
26 | 25

3/4" I.D. IRON PIPE IS FOUND ALONG EAST EDGE OF BC/IP PROTRUSING 4" ABOVE GROUND. TOP OF 3/4" I.P. LEANS 4" NORTH OF PLUMB. (SOURCE UNKNOWN)

1956 OFFICE

1956 BC/IP AND 3/4" I.P. LEFT AS FOUND BANK IS STEEP AND ANY DISTURBANCE TO AREA MAY BREAK OFF BANK

PROFILE →



Accessories Found:

10" NOW 10" DIA. DEAD W. OAK SNAG WITH PREVIOUSLY OPENED ROTTED BLAZES, BEARS S26°W, 33.0 FT (REC S28°W, 33.0 FT) 20 FT HIGH 0BT

10" NOW 9" DIA. DEAD 20 FT HIGH W. OAK SNAG WITH A PARTIALLY HEALED DOUBLE BLAZE BEARS S29 1/2°W, 41.6 FT (REC S32 1/2°W 45.5 FT) 1956

10" NOW 10" DIA W. OAK WITH A FULLY HEALED DOUBLE BLAZE, BEARS S7°E, 45.3 FT (REC S5°E 51.5 FT) 1956

20" NOW 24" DIA. O. FIR WITH A FULLY HEALED DOUBLE BLAZE, BEARS S44°W, 41.7 FT (AGREES WITH REC) 1964

RENEWAL

Monument Set (Procedure and Description)

A 2 5/8" BRASS CAP ON A 1 3/8" O.D.
 BY 32" LONG IRON PIPE IS SET
 AT TOP OF RIVER BANK, PROTRUDES
 4" ABOVE GROUND

BEARS S 10° E, 65.6 FT. FROM
 M.C. BC/IP

B.O.1 IS 4 1/2 FT WEST OF
 A SOUTH RUNNING FENCE

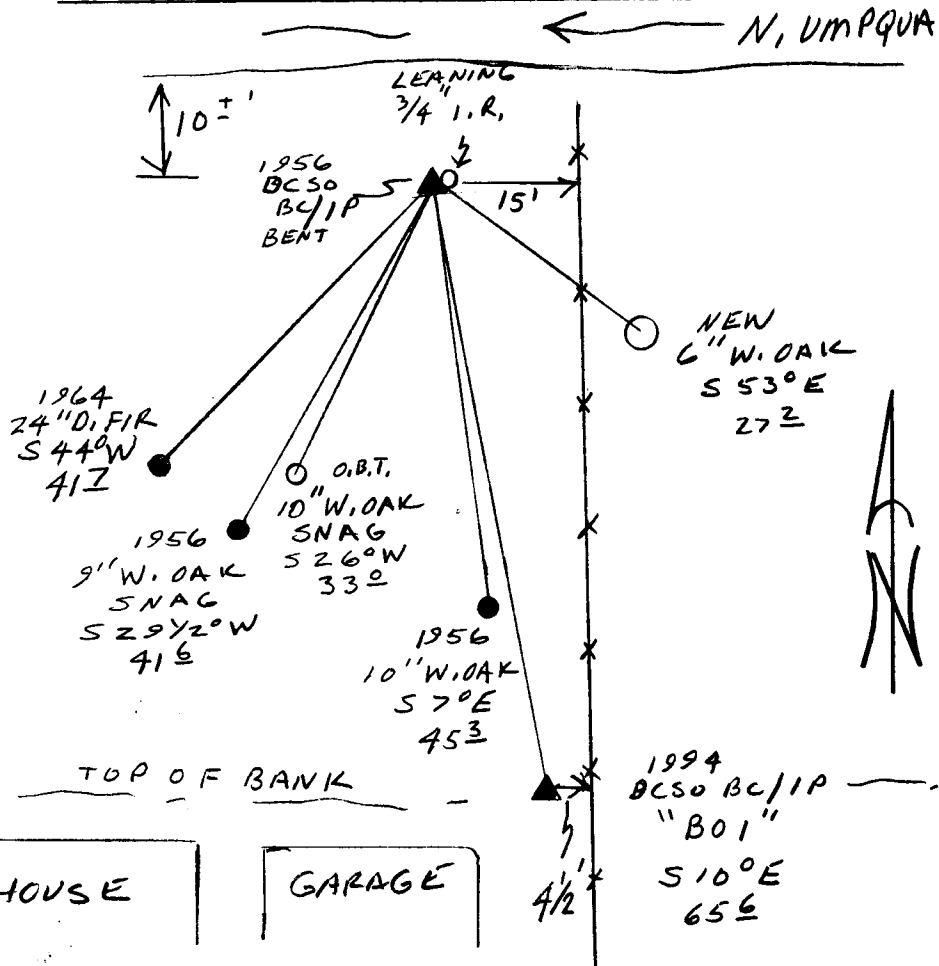
Monument Detail

DOUGLAS COUNTY SURVEYORS
 T 26 S
 R. O. I R
 M. C. BEARS S
 N 10° W 65.6 W
 FT.
 1994
 OFFICE

New Accessories

6" W. OAK DOUBLE BLAZED AND SCRIBED "MCS25CS BT"
 BEARS S 53° E, 27.2 FT

Sketch of Monument, Accessories, and General Area



Location & Comments

CORNER LIES ON A STEEP
 NORTHERLY FACING RIVER
 BANK 15 FT WEST
 OF A SOUTH RUNNING
 FENCE LINE

Comp. Declin. 17 3/4° E
 Agency DCSO
 Party Chief RANDALL W SMITH
 Notekeeper Randall W Smith
 Witnesses STEPHEN J FLAUSE

Address

Surveyor's Seal

REGISTERED
 PROFESSIONAL
 LAND SURVEYOR

Randall W Smith
 EXPIRES 12-31-94

OREGON
 JULY 25, 1990
 RANDALL W. SMITH
 2489

HOUSE GARAGE