

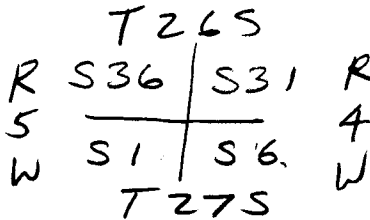
GOVERNMENT CORNER RESTORATION FORM

Date: 5/31/94 By: JP  
This survey consists of:

Township 26S Range 4W Sec. 31 County DOUGLAS Map: \_\_\_\_\_

State OR Date 5-2-99 No. \_\_\_\_\_ Narrative: \_\_\_\_\_  
Corner Rpt: C.S. 64/51

Corner Designation



DOUGLAS COUNTY

Condition Report Only

Not Found

Renewed

Unrecorded

Surveyed In

Referenced Out

MONUMENT DETAIL

Previous Renewals 1901, 1964 GODFREY

Monument(s) Found: (Condition and Source)

15" NOW 31" DIA. D. FIR WITH 4 HEALED BLAZES FACING CARDINAL DIRECTIONS (1901)

1 1/8" DIA. STEEL AXLE PROTRUDES 1" ABOVE GROUND BEARS N 55° E, 3.0 FT FROM CORNER TREE. (SOURCE UNKNOWN.)

N/A

Accessories Found:

- NO ORIG BT'S FD

- 16" NOW 24" DIA 3 FT HIGH ROTTING D. FIR STUMP WITH ILLEGIBLE SCRIBING VISIBLE IN A PREVIOUSLY OPENED BLAZE, BEARS N 87 1/2° W, 23.1 FT (AGREES WITH REC) 1901

- 14" NOW 24" DIA. 2 FT HIGH ROTTING D. FIR STUMP WITH A FULLY HEALED BLAZE, BEARS S 62° W, 21.8 FT (AGREES WITH REC) 1901

- 10" NOW 24" DIA 2 FT HIGH ROTTING D. FIR STUMP WITH A FULLY HEALED BLAZE, BEARS S 27° E, 31.0 FT (REC. S 30° E, 31.0 FT) 1901

SE MADRONE FROM 1964 GODFREY REN NOW GONE

9" NOW 7" DIA 8 FT HIGH D. FIR SNAG WITH A UNHEALED BLAZE AND SCRIBING VISIBLE "T26S RSW S36CS BT" BEARS N 15° W 41.3 FT (REC N 16° W, 41.3 FT) 1964

11" NOW 12" DIA D. FIR WITH A FULLY HEALED DOUBLE BLAZE BEARS N 83° E, 28.0 FT (REC N 83° E, 28.8 FT) 1964 BYRON

✓ 100' 00 26-A  
✓ 700' 100 26-S  
✓ 100' 760 27-A  
✓ 700' 700 27-S

P.S. File No. 64/51

RENEWAL

Monument Set (Procedure and Description)

Monument Detail

NONE

N/A

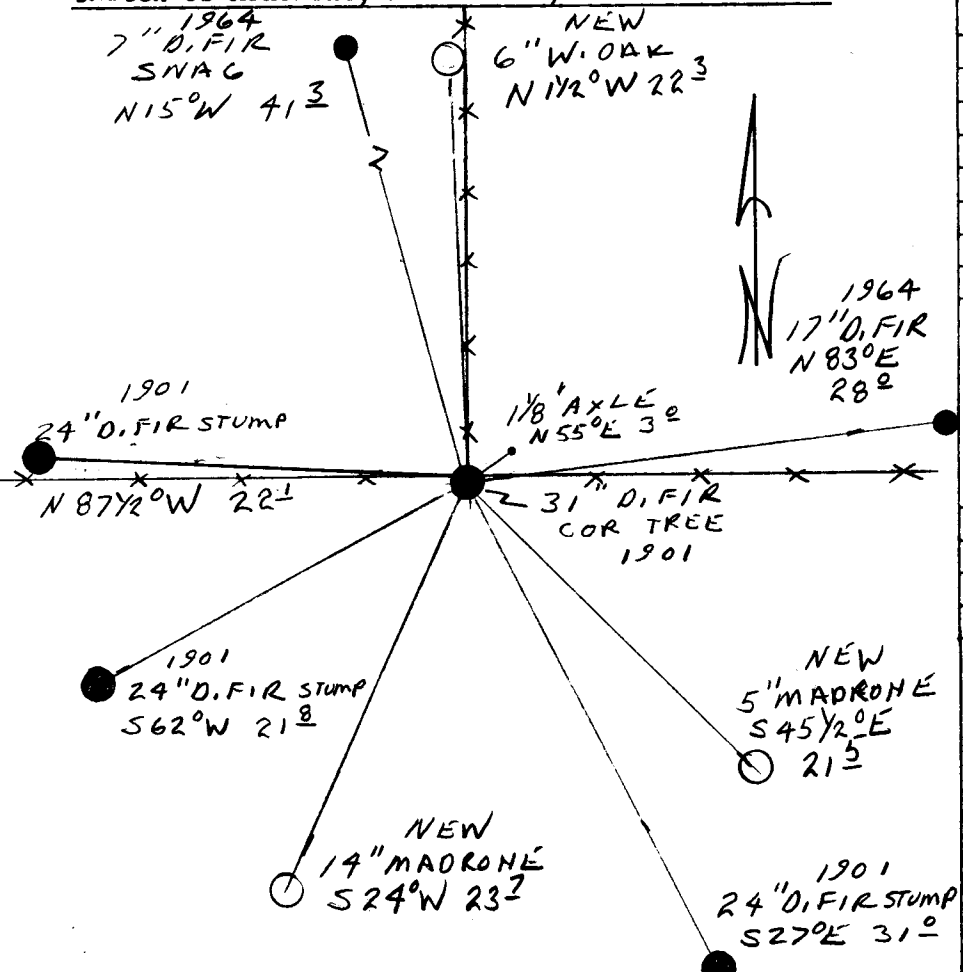
New Accessories

6" DIA. W. OAK DOUBLE BLAZED AND SCRIBED "T26 S R5W  
S36 CS BT" BEAR N 1/2° W, 22.3 FT

5" DIA MADRONE BARK SCRIBED "T27 S R4W S6 CS BT"  
BEARS S 45 1/2° E, 21.5 FT

14" DIA MADRONE DOUBLE BLAZED AND SCRIBED "T27 R5W S1 CS BT"  
BEARS S 24° W, 23.7 FT

Sketch of Monument, Accessories, and General Area



Location & Comments

CORNER LIES AT THE  
INTERSECTION OF A  
3 WAY FENCE CORNER  
WITH FENCES RUNNING  
EASTERLY WESTERLY  
AND NORTHERLY

Comp. Declin. 17 3/4° E  
Agency DCSG  
Party Chief RANDALL W SMITH  
Notekeeper Randall W Smith  
Witnesses STEPHEN J FLAUSK

Address

Surveyor's Seal

REGISTERED  
PROFESSIONAL  
LAND SURVEYOR

Randall W Smith  
EXPIRES 12-31-94

OREGON  
JULY 25, 1990  
RANDALL W. SMITH