

GOVERNMENT CORNER RESTORATION FORM

Date: 5/31/94 By: JC  
This survey consists of:

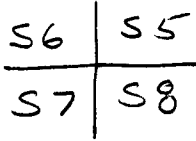
Township ZSS Range 6W Sec. 5 County DOUGLAS

Map: \_\_\_\_\_

State OR Date 5-5-94

No. \_\_\_\_\_ Narrative: \_\_\_\_\_  
Corner Rpt: C.S. 64/51

Corner Designation



DOUGLAS COUNTY

- SURVEYOR
- Condition Report Only
  - Not Found
  - Renewed
  - Unrecorded
  - Surveyed In
  - Referenced Out

PI # 200600

Previous Renewals VI 2 pg 265, 1923, 1958, 1962

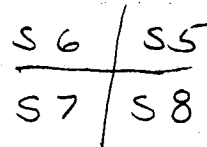
Monument(s) Found: (Condition and Source)

2 1/2" DIA BRASS CAP ON A 1 1/2" O.D. IRON PIPE PROTRUDING 11" ABOVE GROUND. (1958)

(NOTE MARKS ON CAP FACE SOUTH EAST)

MONUMENT DETAIL

COUNTY SURVEYORS OFFICE



T25 S R6W

1958

Accessories Found:

7" NOW 26" DIA 2 FT HIGH OAK STUMP WITH A FULLY HEALED LOWER BLAZE BEARS N 83° W, 20.0 FT (AGREES WITH REC) 1958

4" NOW 13" DIA D. FIR WITH A FULLY HEALED DOUBLE BLAZE, BEARS N 31° E, 44.2 FT (REC N 33° E, 44.2 FT) 1962

10" NOW 27" DIA 8" HIGH D. FIR STUMP WITH A FULLY HEALED LOWER BLAZE, ~~W 85° E~~ BEARS S 85° E, 65.0 FT (REC S 83° E, 65.5 FT) 1962

8" NOW 14" DIA. W. OAK WITH A FULLY HEALED DOUBLE BLAZE BEARS S 36° W, 57.2 FT (REC B. OAK S 37 1/2° W, 57.2 FT) 1962

24

Monument Set (Procedure and Description)

Monument Detail

NONE

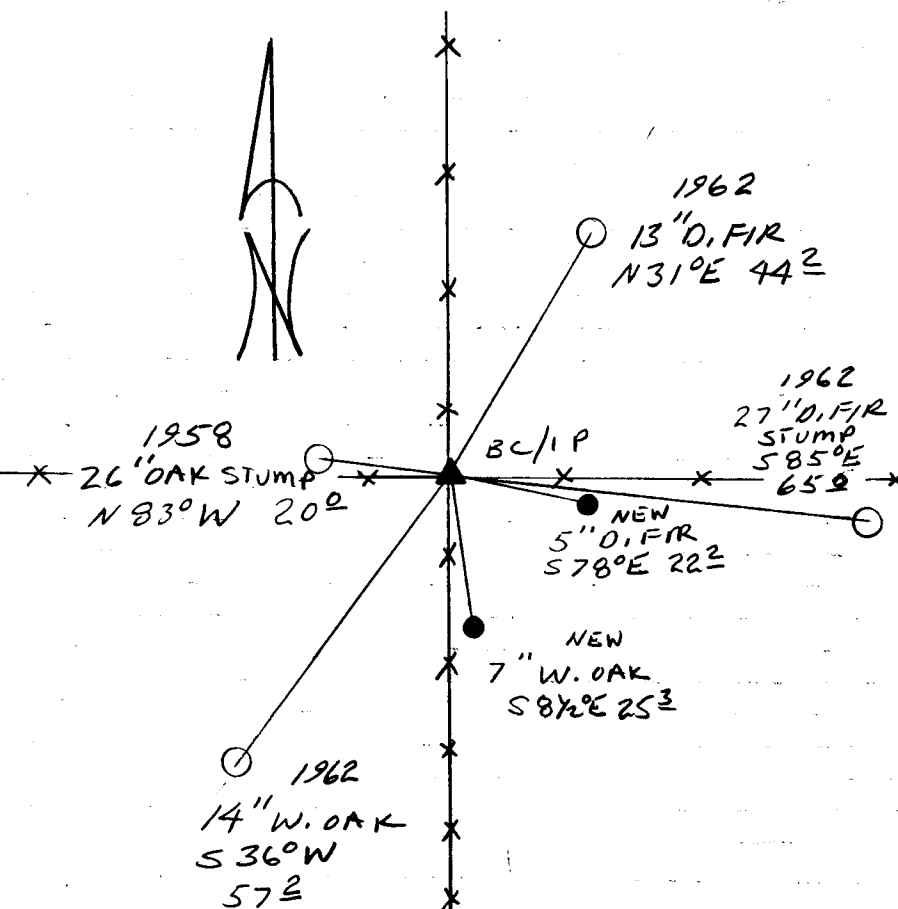
N/A

New Accessories

5" DIA. D. FIR DOUBLE BLAZED AND SCRIBED "T255 R6W S8 CS BT"  
BEARS S 78° E, 22.2 FT

7" DIA. W. OAK DOUBLE BLAZED AND SCRIBED "T255 R6W S8 CS BT"  
BEARS S 8 1/2° E, 25.3 FT

Sketch of Monument, Accessories, and General Area



Location & Comments

CORNER LIES AT THE INTERSECTION OF A FOUR WAY FENCE CORNER

Comp. Declin. 17 3/4' E  
Agency DCSO  
Party Chief RANDALL W SMITH  
Notekeeper Randall W Smith  
Witnesses STEPHEN J FLAUSE

Address

Surveyor's Seal

REGISTERED  
PROFESSIONAL  
LAND SURVEYOR

Randall W Smith  
EXPIRES 12-31-94

OREGON  
JULY 25, 1990  
RANDALL W. SMITH  
2469