

GOVERNMENT CORNER RESTORATION FORM

Township 30S Range 4W Sec. 23

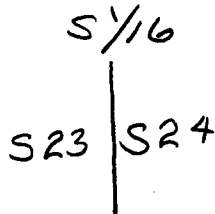
County DOUGLAS This survey consists of:

Date: 3-15-94 By: JC

State OR Date 2-10-94 No. _____

Map _____
Notes _____
Corner C.S. 64/50

Corner Designation



DOUGLAS COUNTY
 Condition Report Only
 Not Found
 Renewed
 Unrecorded
 Surveyed In
 Referenced Out

Previous Renewals NONE

Monument(s) Found: (Condition and Source)

3/4" DIA BLM BRASS CAP ON
A 2 1/2" O.D. IRON PIPE 1"
BELONG GROUND. BE TIP LEANS
4" NORTHWEST OF PLUMB
1981 BLM

MONUMENT DETAIL

U.S. DEPT. OF THE INTERIOR
 S 1/16
 S 23 | S 24
 1981

BUR. OF LAND MANAGEMENT

Accessories Found:

28" DIA NOW 31" DIA D. FIR WITH A FULLY HEALED SINGLE
LOW BLAZE, BEARS S14°W, 108.4 FT (REC S14°W,
107.6 FT DIST POSSIBLE FACE MEASUREMENT) 1981 BLM

10" DIA. NOW 13" DIA. D. FIR FULLY HEALED SINGLE
LOW BLAZE BEARS S88°E, 160.8 FT (REC S88°E
162.4 FT DIST IS A SLOPE MEASUREMENT) 1981 BLM

RENEWAL

Monument Set (Procedure and Description)

Monument Detail

BL/IP RETURNED TO PLUMB
POSITION BC IS NOW FLUSH
WITH GROUND.

N/A

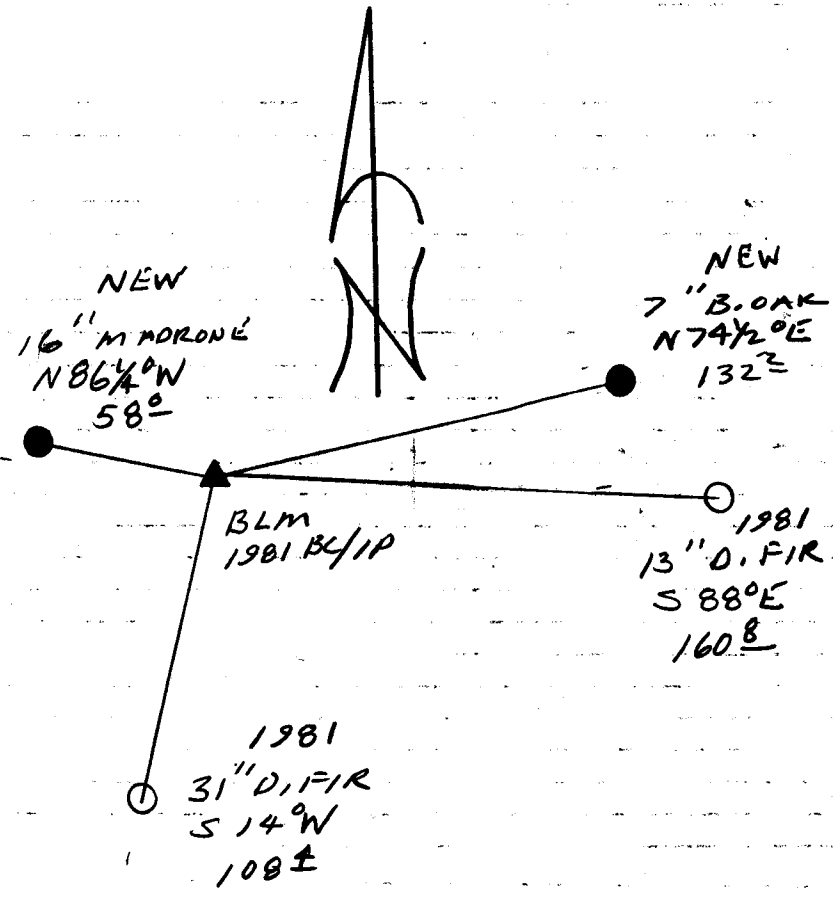
New Accessories

7" DIA. B. OAK DOUBLE BLAZED AND SCRIBED "S 1/16 S 24 CS BT"
BEARS N 74 1/2° E, 132.7 FT.

16" DIA MADRONE DOUBLE BLAZED AND SCRIBED "S 1/16 S 23 CS BT"
BEARS N 86 1/4° W, 58.0 FT

Sketch of Monument, Accessories, and General Area

Location & Comments



Comp. Declin. 17 3/4° E
 Agency DCSO
 Party Chief RANDALL W SMITH
 Notekeeper Charles W Smith
 Witnesses STEPHEN J FLAUSK

Address _____

Surveyor's Seal

REGISTERED
 PROFESSIONAL
 LAND SURVEYOR

Randall W Smith
 EXPIRES 12-31-94

OREGON
 JULY 25, 1990
 RANDALL W. SMITH
 2469