

GOVERNMENT CORNER RESTORATION FORM

Date: 3-15-94 By: JC

This survey consists of:

Township 27S Range 5W Sec. 15 County DOUGLAS Map: _____

State OR Date 1-20-94 No. _____ Narrative: _____

Corner Rpt: C.S. 64/50

Corner Designation

SW
COR
DLC 47

DOUGLAS COUNTY

Condition Surveyor Report Only

Not Found

Renewed

Unrecorded

Surveyed In

Referenced Out

MONUMENT DETAIL

Previous Renewals NONE

Monument(s) Found: (Condition and Source)

N/A

N/A

Accessories Found:

8" NOW 30" DIA DOWN AND ROTTING B. OAK OPENED AND FOUND PARTIAL REVERSE SCRIBING IN TWO AREAS OF TREE, AT AN UPPER AND LOWER BLAZE. BEARS N62°E 60.1 FT. TO ROOT HOLE. O.B.T.

4

Monument Set (Procedure and Description)

Monument Detail

2 3/8" DIA BRASS CAP ON A 1 3/8" BY 32" LONG IRON PIPE IS SET AT RECORD BEARING AND DISTANCE FROM AN ORIGINAL DOWN BEARING TREE CORNER POSITION HITS AN EAST-WEST FENCE LINK

DOUGLAS COUNTY SURVEYORS

T 27 S

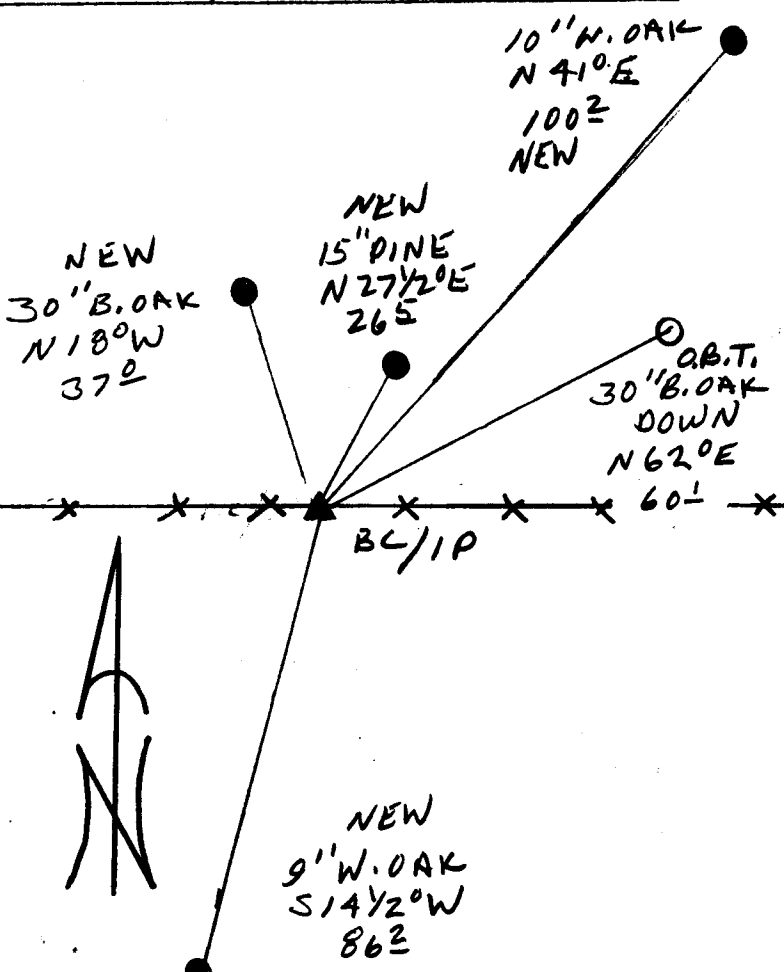
SW | OLC 47 | R
COR | 47 | 5
W

1994
OFFICE

New Accessories

- 9" DIA. W. OAK DOUBLE BLAZED AND SCRIBED "SW DLC 47CS BT" BEARS 86.2 FT BEARS S 14 1/2° W, 86.2 FT
 - 15" DIA. PINE DOUBLE BLAZED AND SCRIBED "SW DLC 47CS BT" BEARS N 27 1/2° E, 26.5 FT
 - 30" DIA B. OAK DOUBLE BLAZED AND SCRIBED "SW DLC 47CS BT" BEARS N 18° W, 37.0 FT
 - 10" DIA W. OAK DOUBLE BLAZED AND SCRIBED "SW DLC 47CS BT" BEARS N 41° E, 100.2 FT
- Sketch of Monument, Accessories, and General Area

Location & Comments



Comp. Declin. 17 3/4° E
 Agency DCSO
 Party Chief RANDALL W SMITH
 Notekeeper *Randall W Smith*
 Witnesses STEPHEN J FLAVSE

Address

REGISTERED Surveyor's Seal
 PROFESSIONAL
 LAND SURVEYOR

Randall W Smith
 EXPIRES 12-31-94

OREGON
 JULY 25, 1990
 RANDALL W. SMITH
 2489