

GOVERNMENT CORNER RESTORATION FORM

Date: 3-15-94 By: JC

This survey consists of:

Township 27S Range 4W Sec. 6

County DOUGLAS Map: \_\_\_\_\_

State OR

Date 2-24-94

No. \_\_\_\_\_

Narrative: \_\_\_\_\_

Corner Rpt: C.S. 64/50

Corner Designation

S 1 | S 6  
S 12 | S 7

DOUGLAS COUNTY  
SURVEYOR

Condition Report Only

Not Found

Renewed

Unrecorded

Surveyed In

Referenced Out

Previous Renewals 1968 BAUGHMAN PI# 700600

Monument(s) Found: (Condition and Source)

2 1/2" DIA BRASS CAP ON A 1 1/2" O.D.  
IRON PIPE PROTRUDING 10" ABOVE  
GROUND (1968)

MONUMENT DETAIL

T 27S

1 | 6  
12 | 7

536

R5W R4W

Accessories Found:

6" NOW 14" DIA. B. OAK WITH A FULLY HEALED SINGLE BLAZE,  
BEARS S 13° E, 28.0 FT (REC S 14° E, 29.0 FT DIST. IS  
A SLOPE MEASUREMENT) 1968

12" NOW 19" DIA. B. OAK WITH A FULLY HEALED SINGLE BLAZE,  
BEARS S 33° W, 93.5 FT (REC S 33° W 94.0 FT) 1968

8" NOW 13" DIA. B. OAK WITH A FULLY HEALED SINGLE BLAZE,  
ON EASTERLY TRUNK OF A DOUBLE TRUNKED TREE, ROOT  
CROWN BEARS N 86° W 74.9 FT (REC N 86° W 73.2 FT  
DIST TO EASTERLY TRUNK) 1968

1" I.R. FROM 1968 BAUGHMAN RENEWAL NOT FOUND

✓ T27-4 100600

✓ T27-5 700600

C.S. File No. 64/50

Monument Set (Procedure and Description)

Monument Detail

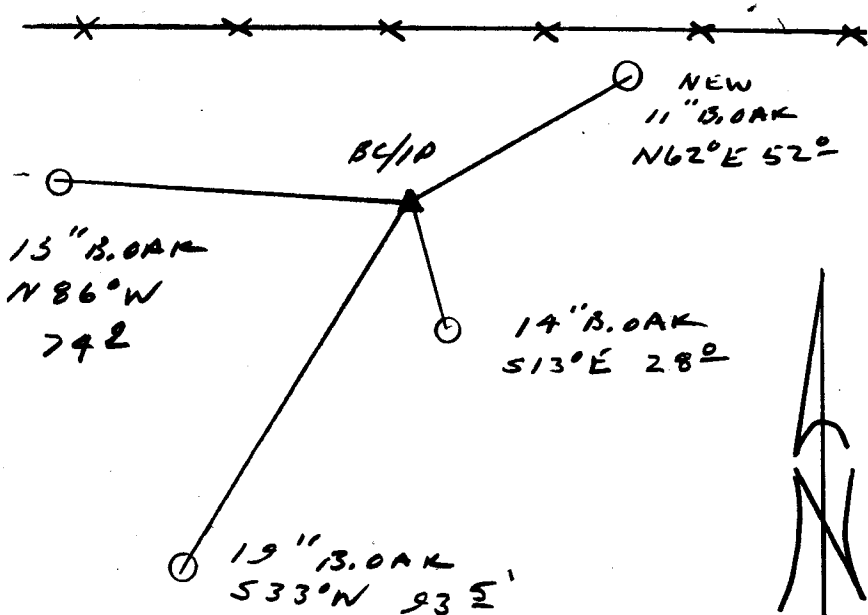
NONE

N/A

New Accessories

11" DIA. B. OAK DOUBLE FLAZED AND SCRIBED "T275 R4W S6 CSBT"  
BEARS N62°E, 52.0 FT

Sketch of Monument, Accessories, and General Area



Location & Comments

CORNER LIES APPROX.  
35' SOUTH OF AN EAST-  
WEST FENCE LINE.

Comp. Declin. 17 3/4° E  
Agency DLSO  
Party Chief RANDALL W. SMITH  
Notekeeper RANDALL W. SMITH  
Witnesses STEPHENT, FLAUS

Address

Surveyor's Seal

REGISTERED  
PROFESSIONAL  
LAND SURVEYOR

*Randall W. Smith*  
EXPIRES 12-31-94

OREGON  
JULY 25, 1990  
RANDALL W. SMITH  
2469