

GOVERNMENT CORNER RESTORATION FORM

Date: 3-15-94 By: JS

This survey consists of:

Township 26 S Range 3 W Sec. 2

County DOUGLAS

Map: \_\_\_\_\_

State OR

Date 12-16-93

No. \_\_\_\_\_

Narrative: \_\_\_\_\_

Corner Rpt: C.S. 64/50

Corner Designation

1/4 53 | S2

DOUGLAS COUNTY  
SURVEYOR

- \_\_\_\_\_ Condition Report Only
- \_\_\_\_\_ Not Found
- Renewed
- \_\_\_\_\_ Unrecorded
- \_\_\_\_\_ Surveyed In
- \_\_\_\_\_ Referenced Out

PI. # 500640

Previous Renewals 1923 COLE, 1957 BYRON

Monument(s) Found: (Condition and Source)

A 2 1/2" DIA BRASS CAP ON A 1 1/2"  
O.D BY 36" LONG IRON PIPE IS  
FOUND BY QUIMBY RLS #1654  
OUT OF GROUND. (1957 BYRON)

TOP OF A STUMP MEASURED  
4" X 6" WITH A 2" T ON TOP  
FIRMLY SET 19" BELOW GROUND.  
(1923 COLE)

COUNTY SURVEYORS OFFICE

T 26 S R 3 W

1/4 S. 3 | 2

197

Accessories Found:

36" NOW 50" DIA. 2 FT HIGH D. FIR STUMP, NO BLAZES OR  
BARK SCRIBING VISIBLE, BEARS N 45° W, 44.5 FT (REC. N 45° W,  
33.0 FT DIST WOULD FIT WELL WITH BARK OF A 1 3/4" DIA. BT)  
ORIG. BT

SE BT FROM 1923 COLE REN. NOW 40" DIA 4' HIGH D. FIR  
STUMP NO BLAZES OR SCRIBING VISIBLE, BEARS S 60 1/2° E,  
45.3 FT (REC S 60 1/2° E, 42.8 FT, HITS OUTSIDE BARK (1923 COLE)

12" NOW 23" DIA. CEDAR WITH A FULLY HEALED SINGLE BLAZE,  
BEARS S 65 1/2° E, 36.8 FT TO CENTER OF ROOT CROWN,  
(REC S 68° E, 36.8 FT) (1957 BYRON).

RENEWAL

Monument Set (Procedure and Description)

AT A POSITION I DETERMINED AS FITTING THE BEST WITH REMAINING BT'S, A HOLE IS DUG TO SET NEW B.C.I.P. OLD FLAGGING AND RUSTY DIRT IS FOUND, AT 19" BELOW SURFACE A STONE WHICH TOP MEASURES 4" X 6" HAS A 2 INCH "T" ON TOP, STONE IS FIRMLY SET. STONE IS FROM 2923 COLE RENEWAL. A 2 3/8" DIA BRASS CAP ON A 1 3/8" DIA BY 32" LONG IRON PIPE IS SET DIRECTLY OVER "T" ON STONE. B.C.I.P. PROTRUDES 10" ABOVE GROUND, IS SURROUNDED BY A 2 FT DIA MOUND OF STONE.

Monument Detail

DOUGLAS COUNTY SURVEYORS

T 26 S

1/4 S3 | S2 R  
3  
W

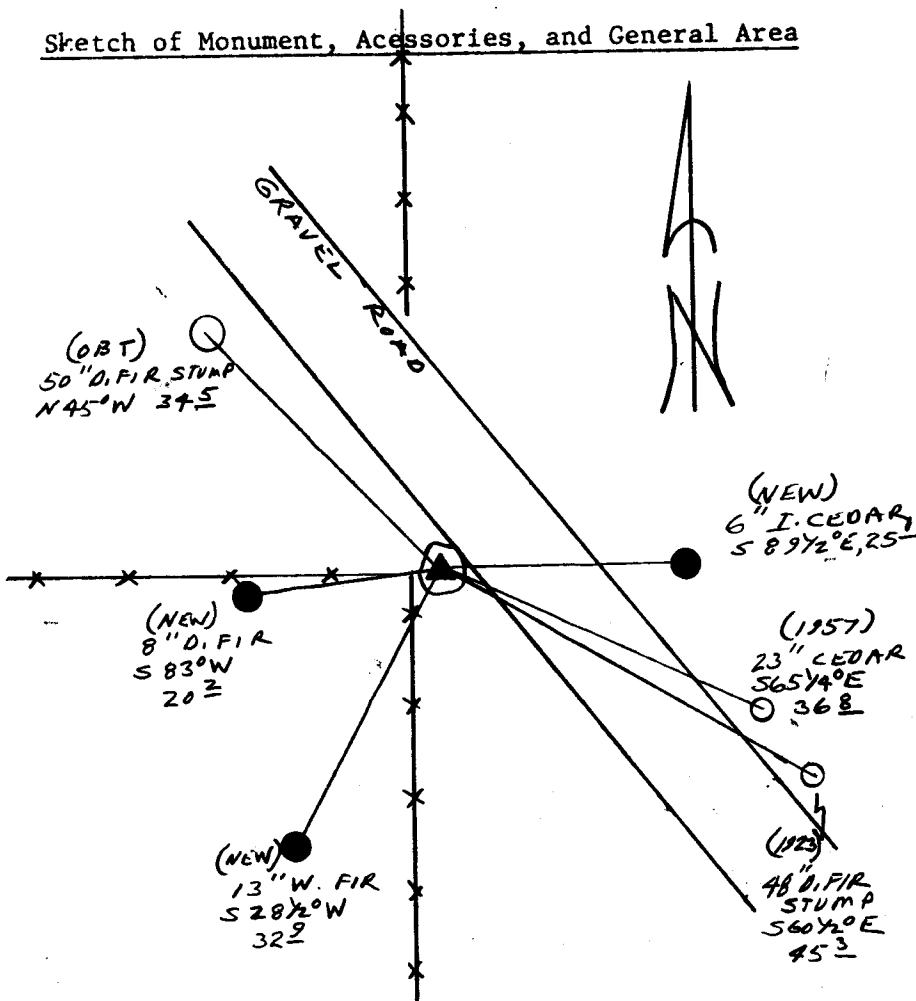
1993

OFFICE

New Accessories

- 6" DIA. I. CEDAR DOUBLE BLAZED AND SCRIBED "1/4 S2 CS BT" BEARS S 89 1/2° E, 25.1 FT
- 13" DIA. W. FIR DOUBLE BLAZED AND SCRIBED "1/4 S3 CS BT" BEARS S 28 1/2° W, 32.9 FT
- 8" DIA. D. FIR DOUBLE BLAZED AND SCRIBED "1/4 S3 CS BT" BEARS S 83° W, 20.2 FT

Sketch of Monument, Accessories, and General Area



Location & Comments

CORNER LIES ON THE WESTERN EDGE OF A GRAVEL ROAD APPROX 4' EASTERLY OF THE INTERSECTION OF OLD WOVEN WIRE FENCE RUNNING SOUTH, WEST AND NORTH

Comp. Declin. 17 3/4° E  
Agency DC SO  
Party Chief RANDALL W. SMITH  
Notekeeper [Signature]  
Witnesses STEPHEN J. ELISE

Address

Surveyor's Seal

REGISTERED  
PROFESSIONAL  
LAND SURVEYOR

*Randall W. Smith*

OREGON  
JULY 25, 1990  
RANDALL W. SMITH  
2489

RENEWABLE 12-31-94