

RENEWAL

Monument Set (Procedure and Description)

AT A POINT DETERMINED FROM
STANDING BT'S A 2 3/8 DIA BRASS CAP
ON A 1 3/8" BY 32" LONG IRON PIPE
IS SET. B.C./IP PROTRUDES 8 IN.
ABOVE GROUND.

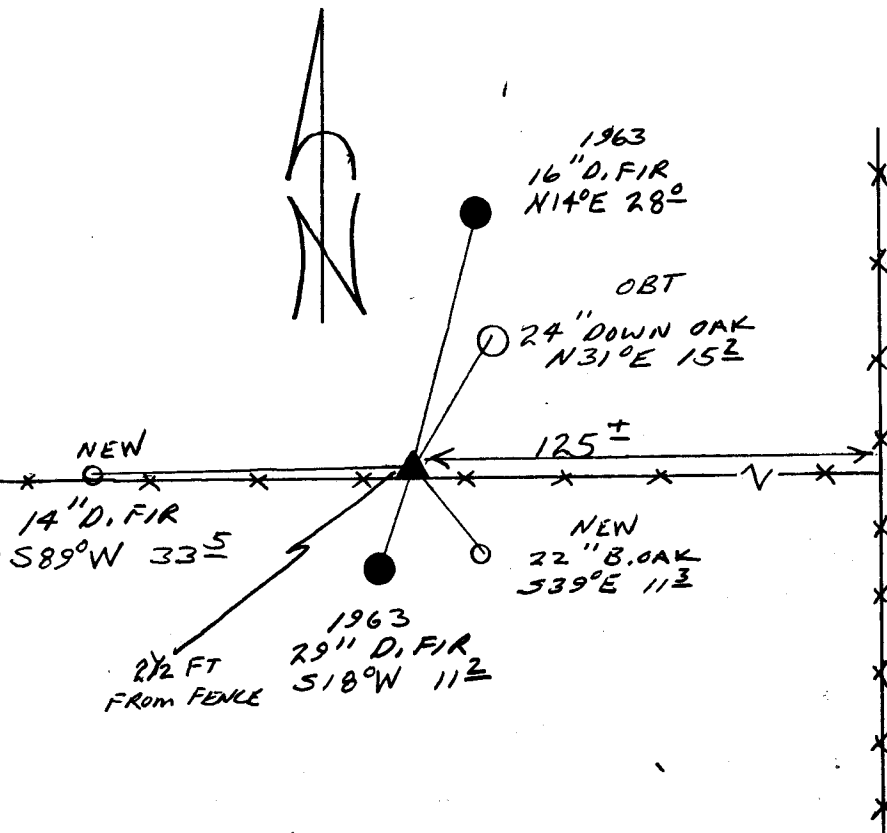
Monument Detail

DOUGLAS COUNTY SURVEYORS
T 25 S
1/4 R
S32/S33 6
W
1993
OFFICE

New Accessories

22" DIA. B. OAK DOUBLE BLAZED AND SCRIBED "1/4 S33 CS BT"
BEARS S 39° E, 11.3 FT.
14" DIA. D. FIR DOUBLE BLAZED AND SCRIBED "1/4 S32 CS BT"
BEARS S 89° W, 33.5 FT.

Sketch of Monument, Accessories, and General Area



Location & Comments

CORNER IS 2 1/2 FT
NORTH OF AN EAST - WEST
FENCE LINE
CORNER LIES APPROX 125 FT
WESTERLY OF A NORTHERLY
WESTERLY AND SOUTHERLY RUNNING
FENCE CORNER
Comp. Declin. 17 3/4° E
Agency DCS
Party Chief RANDALL W SMITH
Notekeeper
Witnesses STEPHEN J FLAVER

Address

Surveyor's Seal
REGISTERED
PROFESSIONAL
LAND SURVEYOR
Randall W Smith
RANDBOROUGH 12-31-94
OREGON
JULY 25, 1990
RANDALL W. SMITH
2409