

GOVERNMENT CORNER RESTORATION FORM

Township 22S Range 12W Sec. 1 County DOUGLAS

OCT 18 1993

State OR Date 10-13-93 No. _____

COUNTY SURVEYOR
DOUGLAS COUNTY, ORE.

Corner Designation _____

S 1 | 56
S 12 |

- _____ Condition Report Only
- _____ Not Found
- Renewed
- _____ Unrecorded
- _____ Surveyed In
- _____ Referenced Out

Previous Renewals #89 83

MONUMENT DETAIL

Monument(s) Found: (Condition and Source)

1/2" DIA IRON ROD PROTRUDING
2 1/2 FT ABOVE GROUND. SOURCE
UNKNOWN POSSIBLY SET IN AREA
OF CORNER FROM A RECENT
SURVEY (NOTE I.R. IS LOOSELY SET)

N/A

O.C.S. BE/1P FROM REN # 89
NOT FOUND.

Accessories Found:

BT'S FROM REN #89 83

10" NOW 18" DIA D.FIR WITH A FULLY HEALED DOUBLE BLAZE,
BEARS N 77 1/2° E, 23.6 FT (REC N 77 1/2° E, 24.0 FT DIST.
COULD BE A SLOPE MEASUREMENT)

14" NOW 23" DIA D.FIR WITH A FULLY HEALED DOUBLE BLAZE,
BEARS S 40° W, 60.2 FT (AGREES WITH REC.)

10" NOW 12" DIA MAPLE WITH A FULLY HEALED SINGLE BLAZE,
BEARS N 86 1/2° W, 41.5 FT (REC. WEST 41.5 FT, ARG TO
MAPLE IS DIFFICULT TO SEE).

RENEWAL

Monument Set (Procedure and Description)

AT A POSITION DETERMINED FROM
 RLN #83 BT'S C&E FRONT ACCESSORIES
 FOUND) A 2 3/8" DIA BRASS CAP ON
 A 1 3/8" O.D. BY 32" LONG IRON PIPE IS
 SET, PROTRUDES 6" ABOVE GROUND.
 1/2" I.R. BEARS N 52 1/2° W, 2.1 FT
 FROM BC/IP

BC/IP IS SURROUNDED BY A 18"
 DIA MOUND OF SAND STONE.

Monument Detail

DOUGLAS COUNTY SURVEYORS
 T 22 S

R	S 1	S 6	R
1	S 12		1
2			1
W			W

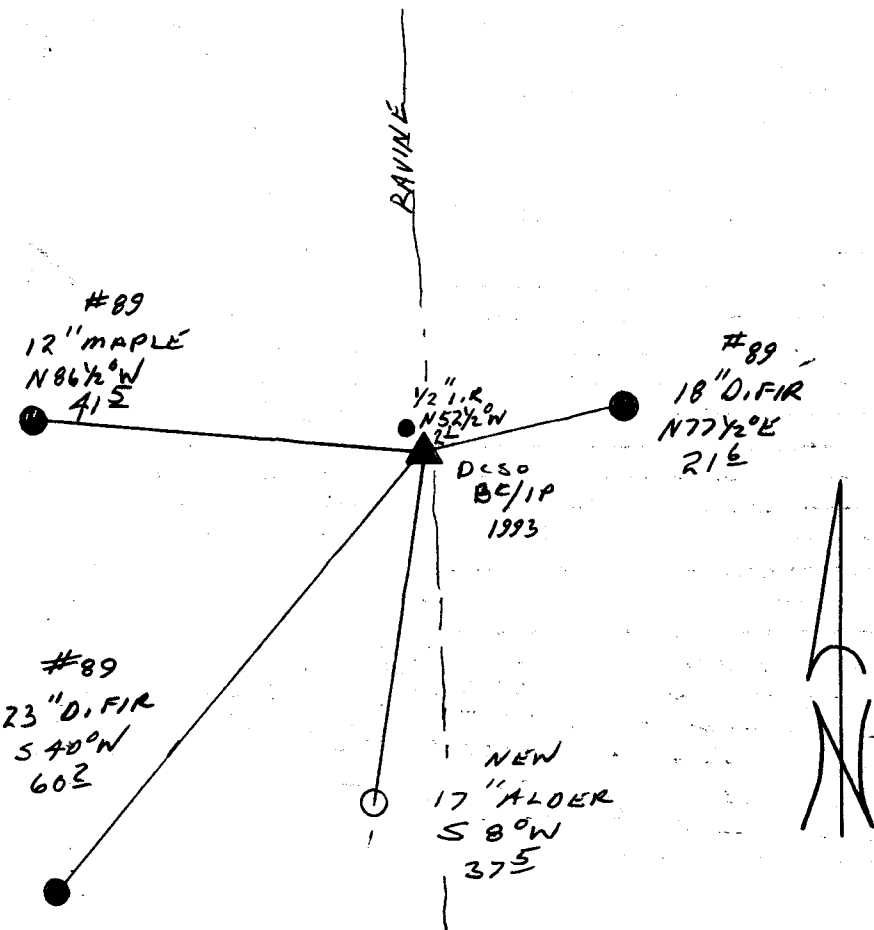
1993

OFFICE

New Accessories

17" ALDER BARK SCRIBED "T22S R12W S12 CS BT"
 BEARS S 8° W 37.5 FT

Sketch of Monument, Accessories, and General Area



Location & Comments

CORNER LIES IN BOTTOM
 OF A RAVINE RUNNING
 NORTH — SOUTH

Comp. Declin. 18° E
 Agency DCSO
 Party Chief RANDALL W SMITH
 Notekeeper Randall W Smith
 Witnesses STEPHEN J FLAUS

Address

Surveyor's Seal

REGISTERED
 PROFESSIONAL
 LAND SURVEYOR

Randall W Smith
 EXPIRES 7-31-94

OREGON
 JULY 25, 1990
 RANDALL W. SMITH
 2468