

Monument Set (Procedure and Description)

Monument Detail

SET

2 3/8" DIA. DC SO BC ON A 1 3/8" BY 32" LONG IRON PIPE, AT A POSITION THAT I FELT MOST POSSIBLE FROM REMAINING EVIDENCE OF CORNER. BC/IP POSITION LIES NEAR CENTER OF CORNER TREE, DETERMINED FROM REMAINING EVIDENCE OF STUMP. SEE ACCESSORIES FOUND ON FRONT PAGE.

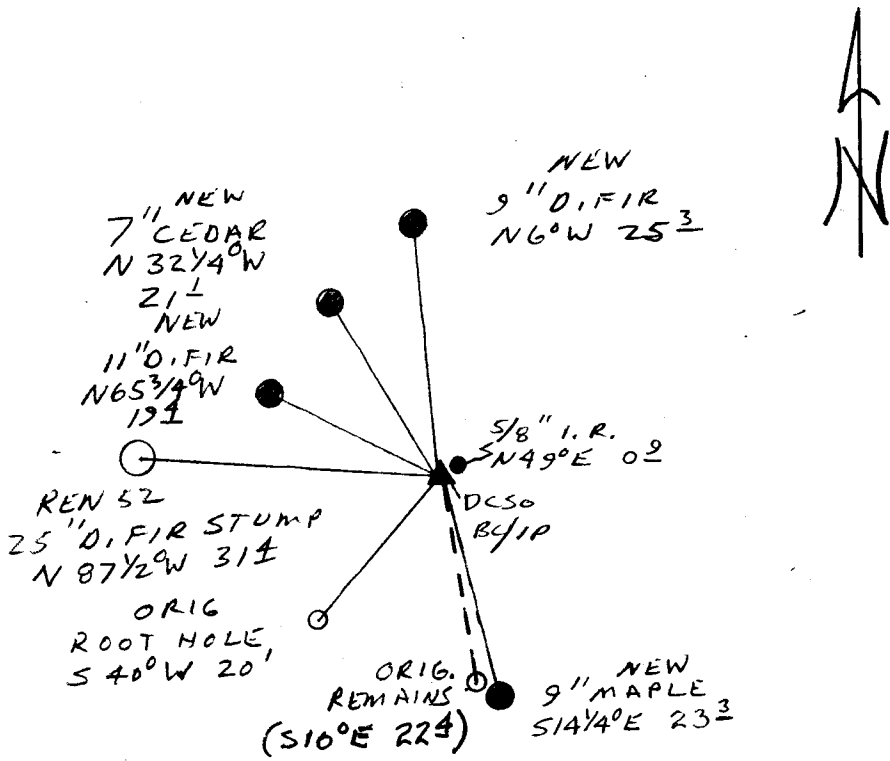
DC SO BC/IP PROTRUDES 8 IN. ABOVE GROUND. 5/8" I.R. BEAR N 49° E, 0.9 FT FROM BC/IP.

DOUGLAS COUNTY SURVEYORS
T 29 S
R NW COR
4
W
DLC
39
1993

New Accessories

- MOST WESTERLY 9" MAPLE OF A CLUSTER OF MAPLES IS DOUBLE BLAZED AND SCRIBED "NW DLC 39 CS BT" BASE OF SCRIBED TRUNK BEARS S 14 1/4° E, 23.3 FT
- 11" DIA. D. FIR DOUBLE BLAZED AND SCRIBED "NW DLC 39 CS BT" BEARS N 65 3/4° W, 19.4 FT
- 7" DIA. CEDAR DOUBLE BLAZED AND SCRIBED "NW DLC 39 CS BT" BEARS N 32 1/4° W, 21.1 FT
- 9" DIA. D. FIR DOUBLE BLAZED AND SCRIBED "NW DLC 39 CS BT" BEARS N 6° W, 25.3 FT

Sketch of Monument, Accessories, and General Area



Location & Comments

Comp. Declin. 18° E
Agency DC SO
Party Chief RANDALL W SMITH
Notekeeper Randall W Smith
Witnesses STEPHEN J FLAUCHE

Address

Surveyor's Seal
REGISTERED
PROFESSIONAL
LAND SURVEYOR

Randall W Smith
EXPIRES 12-31-94

OREGON
JULY 25, 1990
RANDALL W. SMITH
2469