

GOVERNMENT CORNER RESTORATION FORM

FILED 88

Township 27S Range 6W Sec. 35 County DOUGLAS

AUG 26 1993

State OR Date 6-22-93 No. \_\_\_\_\_

COUNTY SURVEYOR  
DOUGLAS COUNTY, ORE.

Corner Designation

ONLY  
1/4 535

- Condition Report Only
- Not Found
- Renewed
- Unrecorded
- Surveyed In
- Referenced Out

Previous Renewals 1961 BYRON

MONUMENT DETAIL

Monument(s) Found: (Condition and Source)

2 1/2" BRASS CAP ON A 1 1/4"  
O.D. IRON PIPE, LEANS 1 FT  
SOUTH OF PLUMB PROTRUDING  
14" ABOVE GROUND. (1961)

COUNTY SURVEYORS OFFICE

T27S R6W  
SOUTH

1/4 535

T28S

1961

Accessories Found:

18" NOW DOWN AND ROOTED OAK, OLD AXE MARK FOUND,  
ROOT HOLE BEARS N 44 3/4° E, 653.7 FT (REC. N 43 3/4° E  
657.4 FT) ORIG. BT

22" NOW DOWN WITH SCATTERED OAK REMAINS FOUND  
NEAR RECORD BEARING + DISTANCE (N 14 1/4° W, 819.7 FT)  
ORIG. BT.

8" NOW 11" DIA. W. OAK WITH A FULLY HEALED DOUBLE  
BLAZE, BEARS N 12 3/4° W, 480.8 FT (REC. N 12° W, 479.8 FT)  
1961

6" NOW 11" DIA. W. OAK WITH A FULLY HEALED INVISIBLE  
BLAZE, I OPENED AND FIND ILLEGIBLE SCRIBE MARKS,  
BEARS N 2 1/4° E 332.2 FT (REC. N 3 1/2° E 330.6 FT)  
1961

SW ASH FROM 1961 REN NOW GONE

RENEWAL

Monument Detail

Monument Set (Procedure and Description)

BEIP RETURNED TO PLUMB POSITION,  
PROTRUDES 14" ABOVE GROUND, SURROUNDED  
BY A LOOSE MOUND OF STONES.

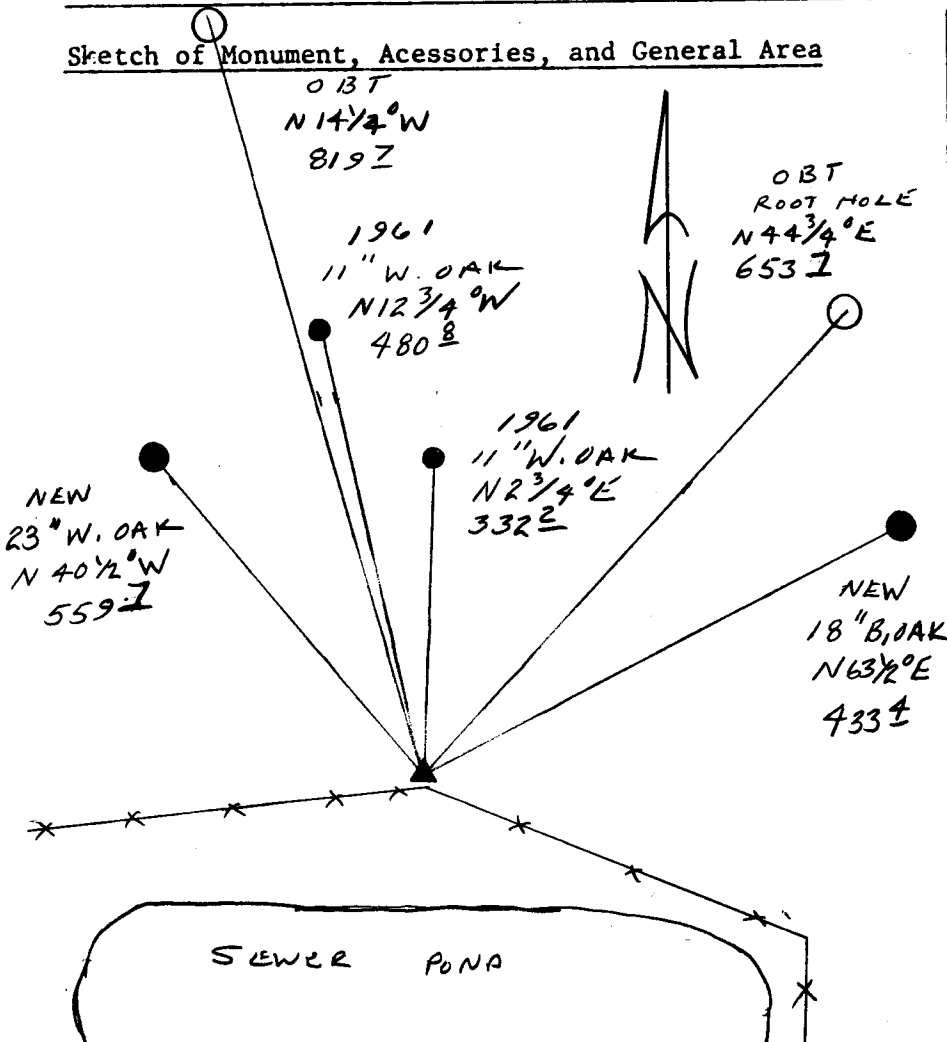
N/A

New Accessories

18" B. OAK DOUBLE BLAZED AND SCRIBED "1/4 S 35 CS BT"  
BEARS N 63 1/2° E, 433.4 FT

23" W. OAK DOUBLE BLAZED AND SCRIBED "1/4 S 35 CS BT"  
BEARS N 40 1/2° W, 559.7 FT

Sketch of Monument, Accessories, and General Area



Location & Comments

CORNER LIES 3 FT  
NORTH OF MOST NORTHERLY  
SEWER PONDS NORTH  
FENCE LINE.

Comp. Declin. 18° E  
Agency DCSO  
Party Chief RANDALL W. SMITH  
Notekeeper Randall W. Smith  
Witnesses STEPHEN J. FLAUSE

Address

Surveyor's Seal

REGISTERED  
PROFESSIONAL  
LAND SURVEYOR  
Randall W. Smith  
EXPIRES 12-31-94  
OREGON  
JULY 25, 1990  
RANDALL W. SMITH  
2469