

GOVERNMENT CORNER RESTORATION FORM

FILED JP

Township 28S Range 6W Sec. 5 County DOUGLAS

JUN 14 1993

State OR Date 5-24-93 No. _____

Corner Designation

COUNTY SURVEYOR
DOUGLAS COUNTY, OR

56 | 55

- Condition Report Only
- Not Found
- Renewed
- Unrecorded
- Surveyed In
- Referenced Out

Previous Renewals 1961 BYRON, 1970 POWELL

Monument(s) Found: (Condition and Source)

2 1/2" DIA BRASS CAP SET
IN CONCRETE IS FOUND
7" BELOW GROUND BROWN OBT
METAL PENNY POST IS FOUND
6" EAST OF BC 7" BELOW GROUND
1970 POWELL

COUNTY SURVEYORS OFFICE
T 275 R 6W.

532

56 | 55

T 285

1970

Accessories Found:

12" NOW 2 FT HIGH BURNT, DOUBLE TRUNKED OAK
WITH REVERSE SCRIBING "BT" FOUND ON 18" SOUTHERLY
TRUNK CENTER OF ROOTS BEARS S 61° W, 679.8 FT
(AGREES WITH REC) ORIG. BT

24" NOW 31" DIA. B. OAK WITH A FULLY HEALED
DOUBLE BLAZE, BEARS S 88° W, 497.6 FT (AGREES WITH REC)
1961 BYRON

24" NOW 28" DIA B. OAK WITH A FULLY HEALED
DOUBLE BLAZE, BEARS N 20° W, 534.3 FT (AGREES WITH REC)
1970 POWELL

5/8" I.R. BEARS N 20° W, 29.1 FT (AGREES WITH REC)
1970 POWELL

Monument Set (Procedure and Description)

Monument Detail

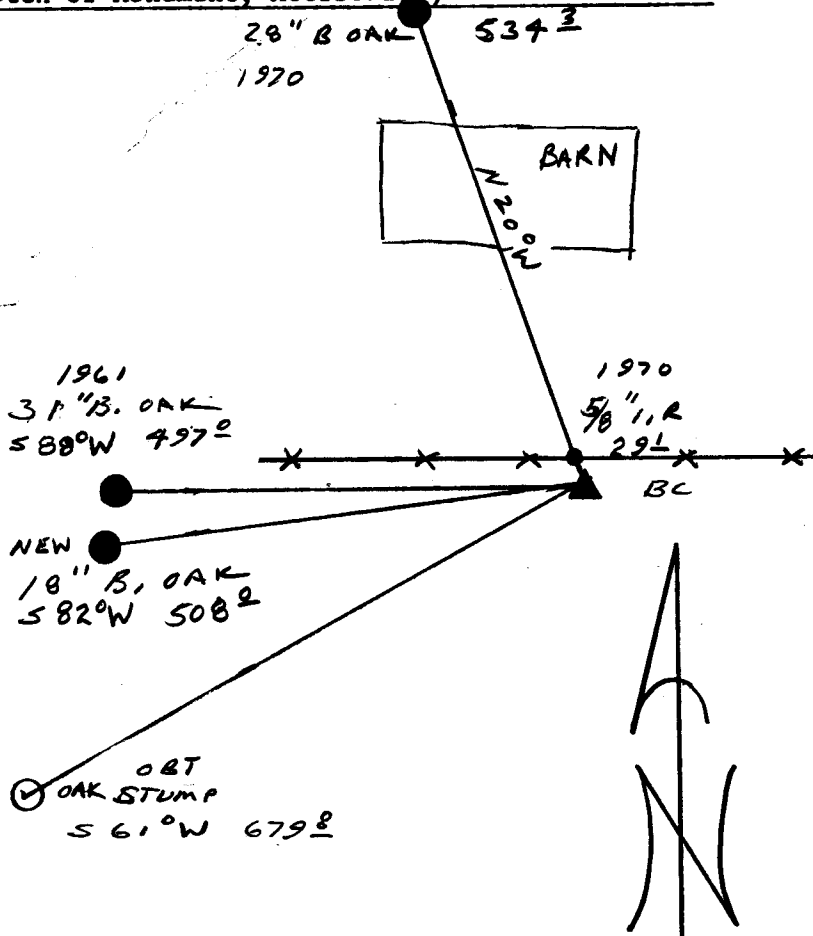
NONE

N/A

New Accessories

18" DIA. B. OAK DOUBLE BLAZED AND SCRIBED "T28SR6WS GCS RT"
BEARS S82°W, 508.0 FT

Sketch of Monument, Accessories, and General Area



Location & Comments

Comp. Declin. 18°E
 Agency DCSO
 Party Chief RANDALL W SMITH
 Notekeeper Randall W Smith
 Witnesses STEPHEN J FLAISE

Address

Surveyor's Seal

REGISTERED
 PROFESSIONAL
 LAND SURVEYOR

Randall W Smith
 EXPIRES 12-31-94

OREGON
 JULY 25, 1990
 RANDALL W. SMITH
 2469