

GOVERNMENT CORNER RESTORATION FORM

FILED JP

Township 27S Range 6W Sec. 30 County DOUGLAS

JUN 14 1993

State OR Date 6-8-93 No. _____

COUNTY SURVEYOR
DOUGLAS COUNTY, ORE

Corner Designation R7W R6W

S25	S30
S36	S31

- Condition Report Only
- Not Found
- Renewed
- Unrecorded
- Surveyed In
- Referenced Out

Previous Renewals GEE 1967 M33-48, M80-61, M110-59

MONUMENT DETAIL

Monument(s) Found: (Condition and Source)

1/4" DIA IRON REBAR
2" BELOW GROUND. (SET IN
M33-48) REBAR MEASURES
32" LONG. CORNER LIES
IN A FIELD, OWNER REQUESTS
REMOVAL OF REBAR HE WILL
FLOW FIELD DEEP IN NEAR
FUTURE.

N/A

Accessories Found:

BEARINGS BASED ON M33-48

3/4" I.R. BEARS N0°08'01"W, 226.90 FT (AGREES WITH REC)
M33-48 WIT COR PER M33-48

3/4" I.R. BEARS N0°08'01"W, 286.35 FT (AGREES WITH REC)
M33-48 WIT COR PER M33-48

5/8" I.R. BEAR N41°07'07"E, 294.31 FT (REC N41°40'08"E
294.31) M110-59

RENEWAL

Monument Set (Procedure and Description)

Monument Detail

W.C. 3/4" I.R. BEARING N 0° 08' 01" W
 226.9 FT FROM SECTION CORNER IS
 REFERENCED AND REMOVED; I.R.
 MEASURES 28" LONG.

A 2 3/8" DIA BRASS CAP ON A 1/4" DIA
 X 32" LONG IRON PIPE IS SET AT
 REFERENCED POSITION, B.C./I.P. PROTRUDES
 1" ABOVE GROUND.

3/4" I.R. IS SET ALONG NORTH
 EDGE OF B.C./I.P., FLUSH WITH GROUND.

DOUGLAS COUNTY SURVEYORS

T 27 S

W C

R	S25	S30	R
7			6
W	S36	S31	W

SOUTH 226.9 FT.

1993

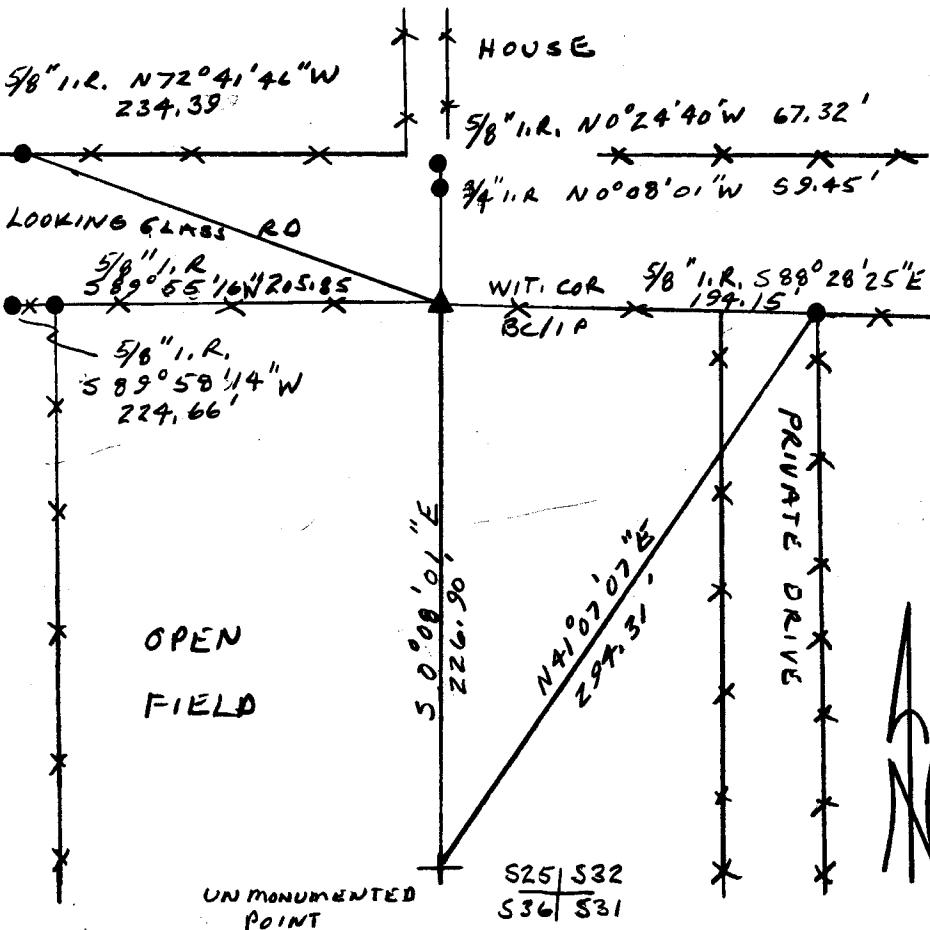
OFFICE

New Accessories FROM B.C./I.P. W.C.

5/8" I.R. BEARS S 88° 28' 25" E	194.15 FT
5/8" I.R. BEARS S 89° 55' 16" W	205.85 FT
5/8" I.R. BEARS S 89° 58' 14" W	224.66 FT
5/8" I.R. BEARS N 72° 41' 46" W	234.39 FT
5/8" I.R. BEARS N 0° 24' 40" W	67.32 FT
3/4" I.R. BEARS N 0° 08' 01" W	59.45 FT

Sketch of Monument, Accessories, and General Area

Location & Comments



Comp. Declin. 18° E
 Agency DCSO
 Party Chief RANDALL W. SMITH
 Notekeeper Randall W. Smith
 Witnesses STEPHEN J. FLAUSK

Address _____

Surveyor's Seal

REGISTERED
 PROFESSIONAL
 LAND SURVEYOR

Randall W. Smith
 EXPIRES 12-31-94

OREGON
 JULY 25, 1990
 RANDALL W. SMITH
 2469