

Township 27S Range 7W Sec. 3 County DOUGLAS

JUN 14 1993

State OR Date 6-6-93 No. _____

COUNTY SURVEYOR
DOUGLAS COUNTY, ORE.

Corner Designation

54 | 53
59 | 510

Condition Report Only
 Not Found
 Renewed
 Unrecorded
 Surveyed In
 Referenced Out

MONUMENT DETAIL

Previous Renewals 1884 BRIGGS, 1960 BYRON

Monument(s) Found: (Condition and Source)

12x8"x5" ABOVE GROUND STONE
WITH 2" + CHISEL ON TOP
1884 BRIGGS

3/4" SHARP PROTRUDER 10" ABOVE
GROUND IS FOUND ALONG SOUTH
EDGE OF STONE SOURCE UNKNOWN

4"x4" CEDAR POST PROTRUDING
5" ABOVE GROUND IS ALONG
SOUTH EDGE OF STONE SOURCE
UNKNOWN.

N/A

Accessories Found:

2" NOW 14" DIA MADRONE WITH A FULLY HEALED DOUBLE
BLAZE, BEARS N50°W, 17.5 FT (AGREES WITH REC.) 1960 BYRON

10" NOW 18" DIA CEDAR WITH A FULLY HEALED
DOUBLE BLAZE, BEARS N63°E, 19.2 FT
(AGREES WITH REC) 1960 BYRON

6" NOW 15" DIA. 3' HIGH O. FIR STUMP WITH A
FULLY HEALED BLAZE, BEARS S27 1/2° W, 42.5 FT
1960 BYRON STUMP WILL BE REMOVED BY LAND OWNER
IN NEAR FUTURE (AGREES WITH REC)

21" NOW 34" DIA CEDAR WITH A FULLY HEALED DOUBLE BLAZE,
BEARS S 55° E, 25.2 FT (AGREES WITH REC) 1960 BYRON

ORIG 36" NOW 24" DIA DOWN AND ROTTED OAK NO BLAZES
OR SCRIBING VISIBLE BEARS S83°E, 56.8 FT (AGREES WITH REC)

ORIG SW BT NOW GONE

Monument Set (Procedure and Description)

Monument Detail

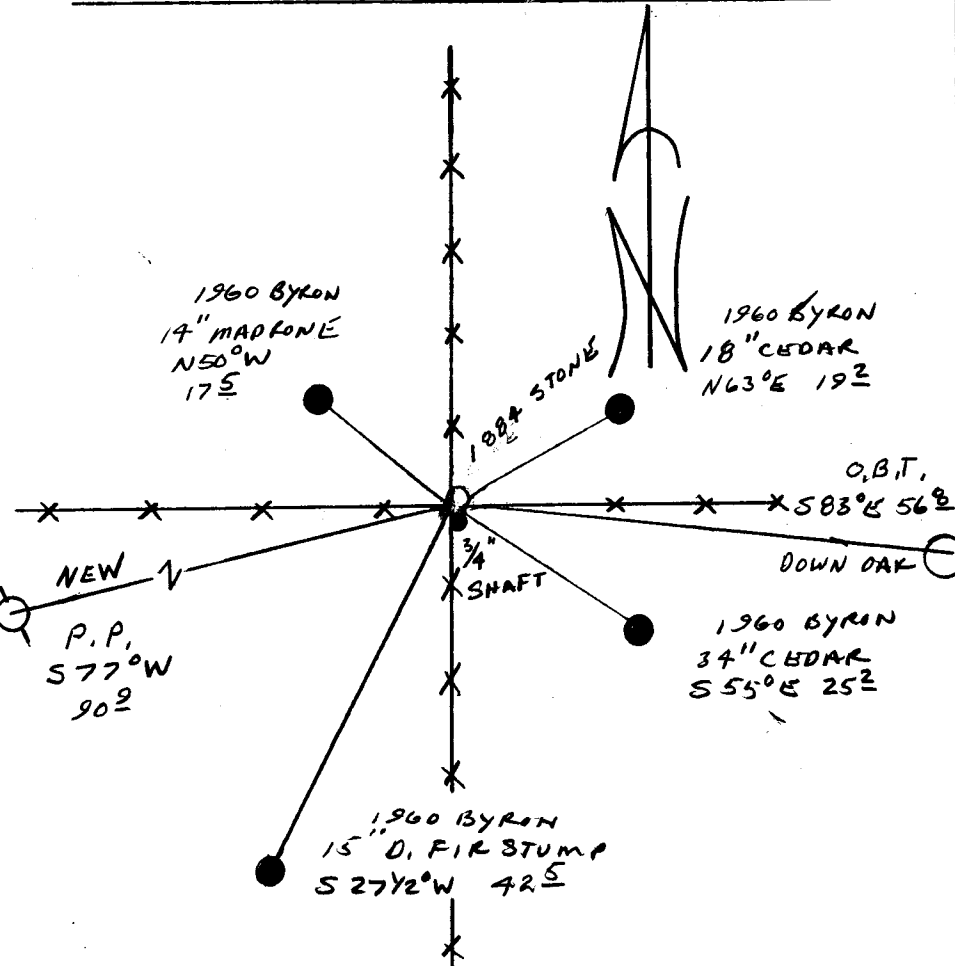
NONE

N/A

New Accessories

POWER POLE "2F313" BEARS S 77° W , 90.9 FT

Sketch of Monument, Accessories, and General Area



Location & Comments

CORNER LIES AT THE INTERSECTION OF A FOUR WAY FENCE CORNER.

Comp. Declin. 18° E
 Agency DCSO
 Party Chief RANDALL W. SMITH
 Notekeeper Randall W. Smith
 Witnesses STEPHEN J. FLAUS

Address

Surveyor's Seal

REGISTERED
 PROFESSIONAL
 LAND SURVEYOR

Randall W. Smith

OREGON
 JULY 25, 1990
 RANDALL W. SMITH
 2469