

RENEWAL

Monument Set (Procedure and Description)

POSITION OF IRON BOLT IS REFERENCED
 AND A 2 3/8" BRASS CAP ON A 1 1/4"
 O.D. BY 32" LONG IRON PIPE IS
 SET AT REFERENCED POSITION. BC/IP
 PROTRUDES 9" ABOVE GROUND. IRON
 BOLT IS ALONG WESTERLY EDGE OF BC/IP
 PROTRUDING 7" ABOVE GROUND

Monument Detail

DOUGLAS COUNTY SURVEYORS
 T275

1/4 S21 R
 S28 6
 W

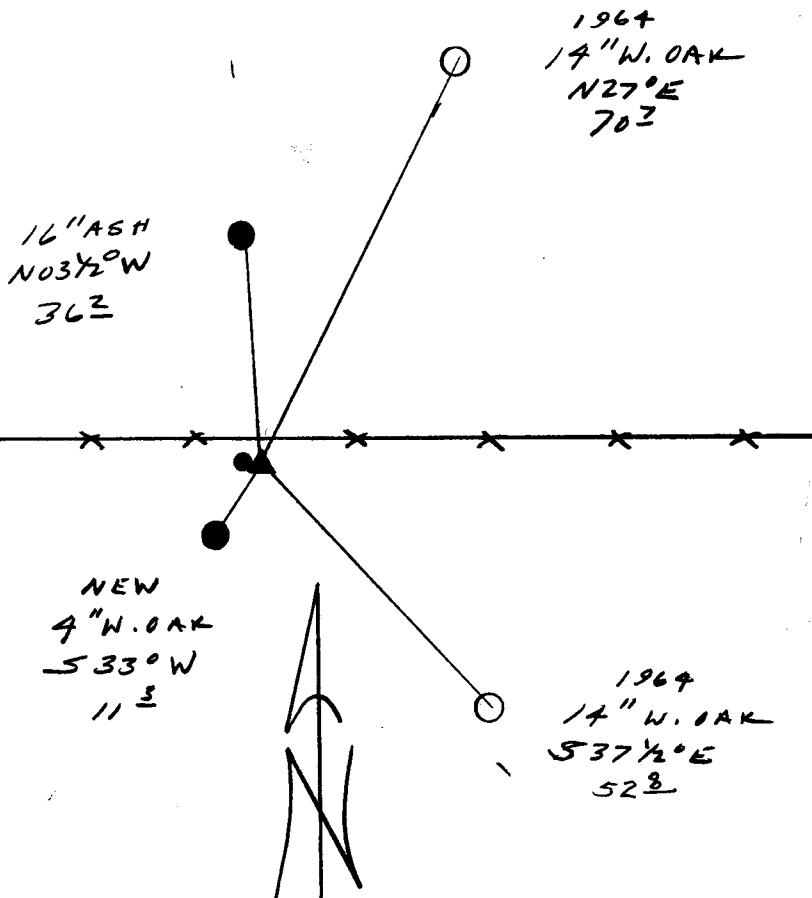
1993
 OFFICE

New Accessories

16" DIA ASH DOUBLE BLAZED AND SCRIBED " 1/4 S21 CS BT"
 BEARS N 03 1/2° W , 36.2 FT.

4" DIA W. OAK DOUBLE BLAZED AND SCRIBED " X BT"
 BEARS S 33° W , 11.3 FT

Sketch of Monument, Accessories, and General Area



Location & Comments

BOLT IS SOUTH LEFT
 FROM A EASTERLY-WESTERLY
 RUNNING FENCE LINE

Comp. Declin. 18°E
 Agency DCSD
 Party Chief RANDALL W SMITH
 Notekeeper Randall W Smith
 Witnesses STEPHEN J FLAUSE

Address

Surveyor's Seal

REGISTERED
 PROFESSIONAL
 LAND SURVEYOR

Randall W Smith
 EXPIRES 12-31-94

OREGON
 JULY 25, 1990
 RANDALL W. SMITH
 2469