

GOVERNMENT CORNER RESTORATION FORM

FILED JP

Township 27S Range 6W Sec. 19 County DOUGLAS

JUN 9 1993

State OR Date 5-4-93 No. _____

COUNTY SURVEYOR
DOUGLAS COUNTY, ORE.

Corner Designation

R
7/4 S24 | S19 6
W W

- Condition Report Only
- Not Found
- Renewed
- Unrecorded
- Surveyed In
- Referenced Out

Previous Renewals 1968 NORTH CRAFT, COLS 1914?

Monument(s) Found: (Condition and Source)

TOP OF A 8" X 8" FIRMLY SET WEDGE
SHAPED STONE PROTRUDING
5" ABOVE GROUND. (COLS 1914
VOL 2 pg 179)?

3/4" I.R. PROTRUDES 14" ABOVE
GROUND, FD ALONG EAST EDGE
OF STONE. (1968 NORTH CRAFT?)

N/A

Accessories Found:

1968 NORTH CRAFT BT'S
8" NOW 9" DIA W. OAK WITH A FULLY HEALED SINGLE
BLAZE BEARS EAST 10.8 FT (AGREES WITH REC)

8" NOW 8" DIA, W. OAK WITH A FULLY HEALED SINGLE BLAZE,
BEARS N67°W, 13.0 FT (REC N60°W, 13.0 FT)

18" NOW LARGE ROTTED OUT OAK STUMP WITH MULTI TRUNK
W. OAKS GROWING ON WEST AND SOUTHERLY EDGE OF STUMP,
ROTTED STUMP BEARS N38 1/2°W, 41.6 FT, NO SCRIBING
OR BLAZES VISIBLE. (AGREES WITH REC.) ORIG. BT

ORIG NE BT GONE

(T27-6
100340.002)
C (T27-7
100340)

Monument Set (Procedure and Description)

Monument Detail

NONE SET CORNER LIES
UNDER ~~CORNER~~ ~~UNDER~~
FENCING

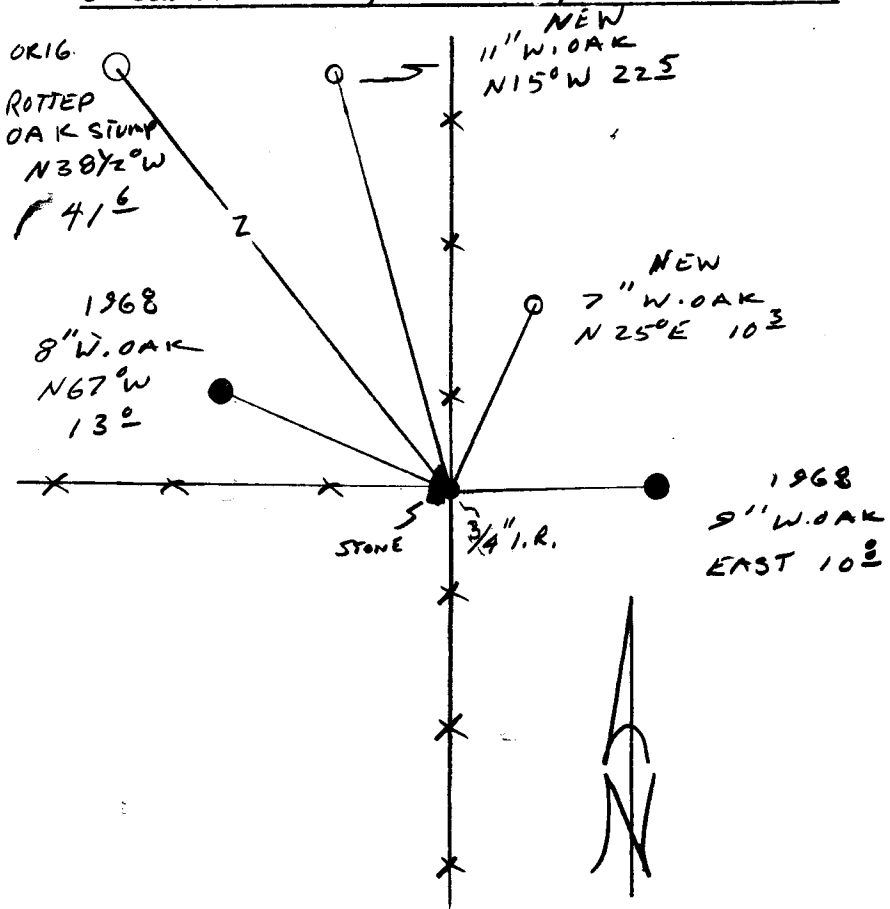
N/A

New Accessories

11" W. OAK DOUBLE BLAZED AND SCRIBED "Y4S 24 CS BT"
BEAR N15°W 22.5 FT

7" W. OAK DOUBLE BLAZED AND SCRIBED "Y4S 19 CS BT"
BEARS N25°E, 10.3 FT.

Sketch of Monument, Accessories, and General Area



Location & Comments

CORNER LIES AT THE
INTERSECTION OF A NORTH
SOUTH AND WEST RUNNING
FENCE LINE.

Comp. Declin. 18°E
Agency OCSG
Party Chief RANDALL W. SMITH
Notekeeper Randall W. Smith
Witnesses STEPHEN J. FLAUSE

Address

REGISTERED
PROFESSIONAL
LAND SURVEYOR

Randall W. Smith
EXPIRES 12-31-94

OREGON
JULY 25, 1990
RANDALL W. SMITH
2489