

GOVERNMENT CORNER RESTORATION FORM

FILED *JP*

Township 27 S Range 6 W Sec. 21 County DOUGLAS

JUN 8 1993

State OR Date 5-10-93 No. \_\_\_\_\_

Corner Designation

COUNTY SURVEYOR  
DOUGLAS COUNTY, OR.

1/4 S 21 | S 22

- Condition Report Only
- Not Found
- Renewed
- Unrecorded
- Surveyed In
- Referenced Out

Previous Renewals 1955 BYRON

MONUMENT DETAIL

Monument(s) Found: (Condition and Source)

2 1/2" BRASS CAP ON A 1 1/2" O.D.  
IRON PIPE PROTRUDING 1" ABOVE  
GROUND (1955 BYRON)

COUNTY SURVEYOR OFFICE

T 27 S R 6 W

1/4 | S  
21 | 22

1955

Accessories Found:

12" NOW 24" DIA. W. OAK WITH A FULLY HEALED SINGLE  
BLAZE, BEARS N 62° W, 134.5 FT (AGREES WITH REC)  
1955 BYRON

3/4" I.R. AT FENCE CORNER, NO SCRIBING FR ON  
FENCE CORNER POST I.R. BEARS S 75° E, 195.6 FT  
AGREES WITH TAG ON FENCE POST NO BRG AND DISTANCE  
TO I.R. FOUND IN PT # 400340) 1955 BYRON)

Monument Set (Procedure and Description)

Monument Detail

NONE

N/A

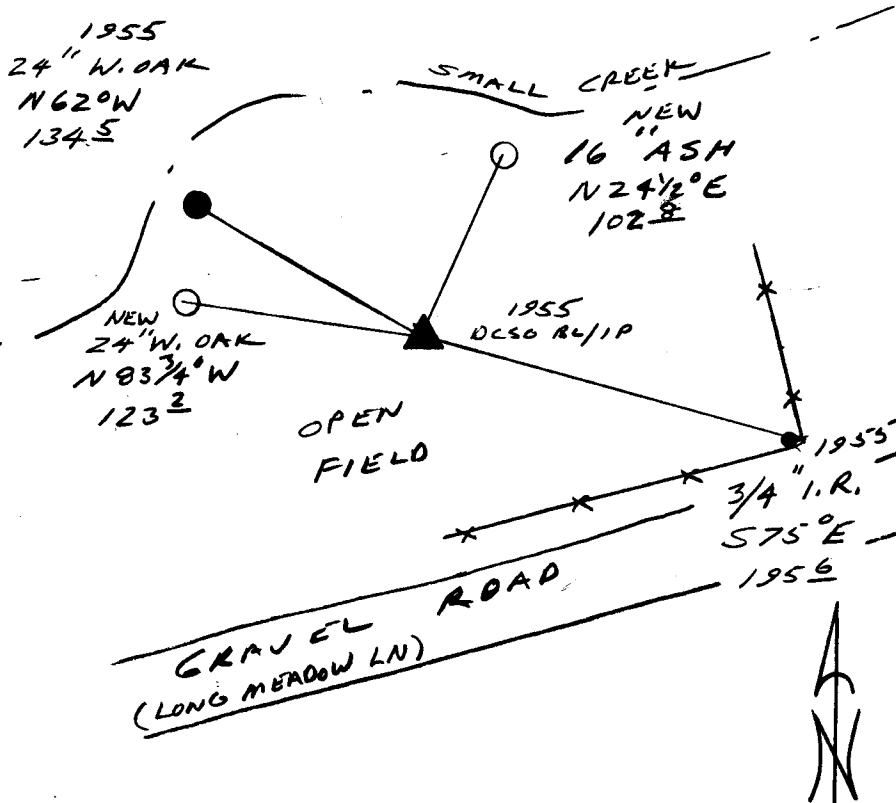
New Accessories

24" DIA. W. OAK DOUBLE BLAZED AND SCRIBED "1/4 S 21 CS BT"  
BEARS N 83 3/4° W, 123.2 FT.

16" DIA ASH DOUBLE BLAZED AND SCRIBED "1/4 S 22 CS BT"  
BEARS N 24 1/2° E, 102.8 FT.

Sketch of Monument, Accessories, and General Area

Location & Comments



\_\_\_\_\_  
 \_\_\_\_\_  
 \_\_\_\_\_  
 \_\_\_\_\_  
 \_\_\_\_\_  
 \_\_\_\_\_

Comp. Declin. 18° E  
 Agency DCSO  
 Party Chief RANDALL W. SMITH  
 Notekeeper STEPHEN J. FLAISE  
 Witnesses STEPHEN J. FLAISE

Address \_\_\_\_\_

Surveyor's Seal

REGISTERED  
 PROFESSIONAL  
 LAND SURVEYOR

*Randall W. Smith*  
 EXPIRES 12-31-94

OREGON  
 JULY 25, 1990  
 RANDALL W. SMITH  
 2489