

Township 27S Range 3W Sec. 6 County DOUGLAS

State OR Date 3-31-93 No. _____

APR 13 1993

Corner Designation

$\frac{1}{4}$ S 1 | S 6

COUNTY SURVEYOR
DOUGLAS COUNTY, ORE.

- Condition Report Only
- Not Found
- Renewed
- Unrecorded
- Surveyed In
- Referenced Out

Previous Renewals # _____, # 154

MONUMENT DETAIL

Monument(s) Found: (Condition and Source)

A 2 1/2" DIA BRASS CAP ON A 1 1/4" O.D. IRON PIPE PROTRUDING 5" ABOVE GROUND. (BE/IP SET FLUSH WITH GROUND IN REN #154, CATTLE HAVE STAMPED GROUND AROUND BE/IP TO THE POINT BE/IP NOW PROTRUDS ABOVE GROUND)

COUNTY SURVEYORS OFFICE

T 27S

$\frac{1}{4}$ S | S R
 1 | 6 3
 RESE7 1988 W
 R4W
 1964

Accessories Found:

BOTH BT'S FOUND AS RECORDED IN REN # 154
 BT'S ARE TO BE REMOVED, BOTH BT'S ARE MISSING.

REN # 158

Monument Set (Procedure and Description)

Monument Detail

NONE

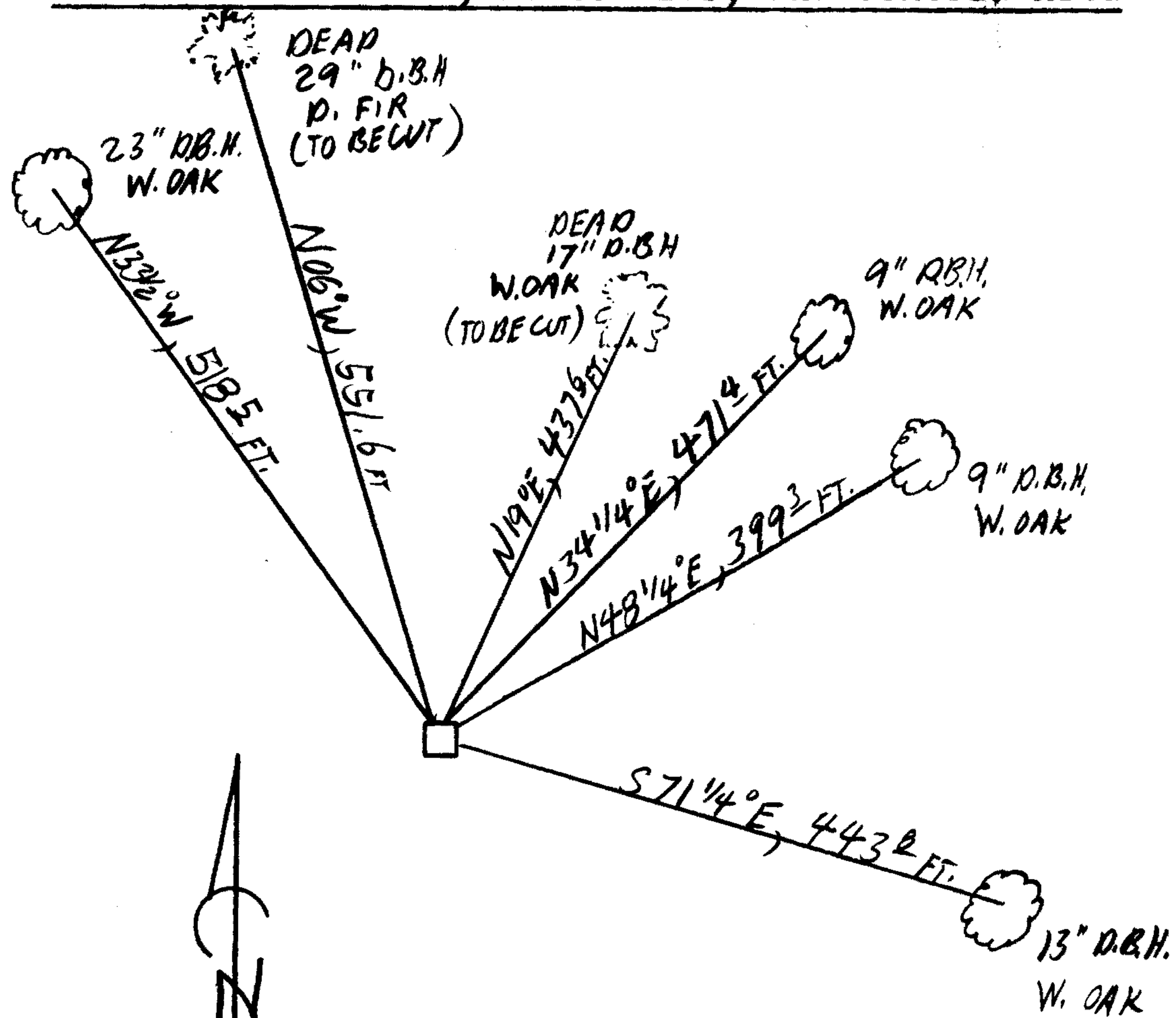
* NEW ACCESSORIES CONTINUED FROM BELOW
A 23 INCH D.B.H. WHITE OAK SCRIBED 1/4 S2 CS BT ON A DOUBLE BLAZE BEARS N 33 1/2 ° W, 518⁵ FEET DISTANT.

N/A

New Accessories

A 9 INCH D.B.H. WHITE OAK (HAS APPARENT BLAZE; THIS IS OPENED LOW TO GROUND BUT NO SCRIBING IS FOUND) SCRIBED 1/4 S6 CS BT ON A DOUBLE BLAZE, BEARS N 34 1/4 ° E, 471⁵ FEET DISTANT.
A 13 INCH D.B.H. WHITE OAK (THE MOST NORTHWESTERLY TRUNK OF MULTI TRUNKED TREE) SCRIBED 1/4 S6 CS BT ON A DOUBLE BLAZE BEARS S 71 1/4 ° E 443² FEET DISTANT (BEARING AND DISTANCE TO BASE OF SCRIBED TRUNK).
A 9 INCH D.B.H. WHITE OAK SCRIBED 1/4 S6 CS BT ON A DOUBLE BLAZE BEARS N 48 1/4 ° E, 399³ FEET DISTANT. NEW ACCESSORIES CONTINUED ABOVE *

Sketch of Monument, Accessories, and General Area



Location & Comments

Comp. Declin. 18° E
Agency DCSO
Party Chief RANDALL W SMITH
Notekeeper Randall W Smith
Witnesses STEPHEN J FLAUSE

Address

Surveyor's Seal

REGISTERED
PROFESSIONAL
LAND SURVEYOR

Randall W Smith

OREGON
JULY 25, 1990
RANDALL W. SMITH
2469