

GOVERNMENT CORNER RESTORATION FORM

FILED

Township 24S Range 4W Sec. 32 County DOUGLAS

State OR Date 2-22-93 No. _____

MAR 17 1993

Corner Designation

COUNTY SURVEYOR
DOUGLAS COUNTY, ORE

$\frac{1}{4}$ $\frac{S32}{S5}$ W.C.

- Condition Report Only
- Not Found
- Renewed
- Unrecorded
- Surveyed In
- Referenced Out

Previous Renewals #122(T24-4) (240700T25-4)

MONUMENT DETAIL

Monument(s) Found: (Condition and Source)

A 2 1/2" DIA BRASS CAP ON A
1 1/4" OD IRON PIPE PROTRUDING
1 FT ABOVE GROUND. (REN #122)

COUNTY SURVEYORS OFFICE

T24S

$\frac{1}{4}$ $\frac{S32}{S5}$ $\frac{R}{4}$
W

W T25S
C 14 FT. E
TO COR.
1963

Accessories Found:

5" NOW 17" DIA. W. OAK WITH FULLY HEALED BLAZE
BEARS N 82° E, 69.9 FT (AGREES WITH REC) REN #122

6" NOW 15" DIA W. OAK WITH A FULLY HEALED BLAZE
BEARS S 78° W, 38.2 FT. (AGREES WITH REC) REN #122

ORIGINAL BT'S GONE

#178 T24-4X
240700.007 ✓

RENEWAL

Monument Set (Procedure and Description)

Monument Detail

NONE

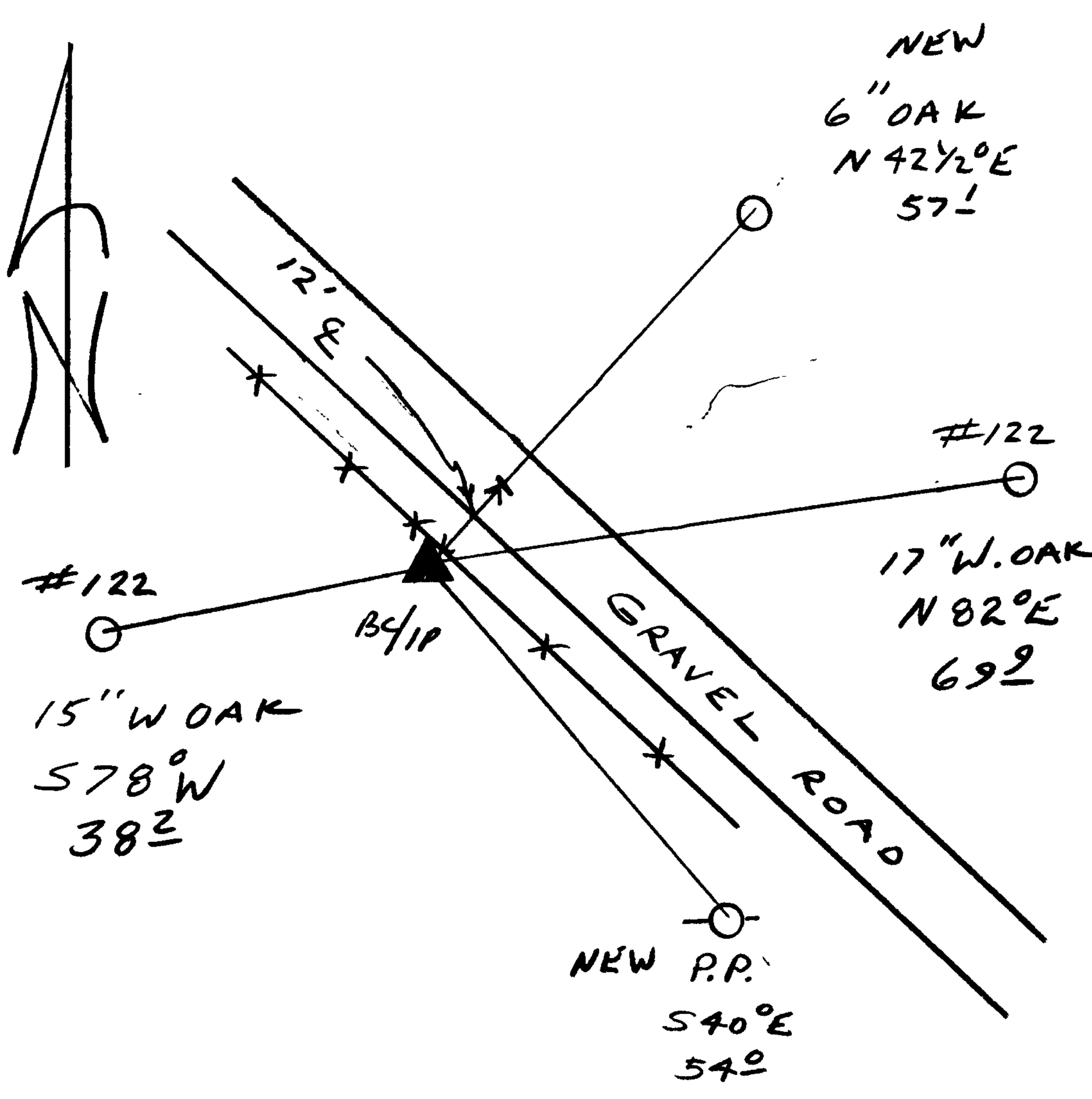
N/A

New Accessories

6" DIA OAK DOUBLE BLAZED AND SCRIBED "X BT"
BEARS N 42 1/2° E, 57.1 FT

POWER POLE "3H4-221 30 104 29" BEARS S 40° E, 54.0 FT

Sketch of Monument, Accessories, and General Area



Location & Comments

CORNER LIES 1 FT SE'LY
OF A FENCE LINE

Comp. Declin. 18° E
Agency OCSO
Party Chief RANDALL W SMITH*
Notekeeper Randall W Smith
Witnesses STEPHEN J FLAUSE

Address

Surveyor's Seal

REGISTERED
PROFESSIONAL
LAND SURVEYOR

Randall W Smith
EXPIRES 12-31-94

OREGON
JULY 25 1990
RANDALL W SMITH
2465