

GOVERNMENT CORNER RESTORATION FORM

FILED

Township 30 S Range 5 W Sec. 19 County DOUGLAS

MAR 17 1993

State OR Date 2-19-93 No. _____

COUNTY SURVEYOR
DOUGLAS COUNTY, ORE.

Corner Designation

S25 | 519

S30

- Condition Report Only
- Not Found
- Renewed
- Unrecorded
- Surveyed In
- Referenced Out

Previous Renewals #244 (T30-5) (#197 T30-6)

MONUMENT DETAIL

Monument(s) Found: (Condition and Source)

1 1/4" OD X 36" LONG IRON PIPE
BENT NORTHERLY, PROTRUDING
12" ABOVE GROUND (NO BRASS
CAP) REN #244

N/A

Accessories Found:

FD 2 3/4" I.R.'S FLUSH WITH GROUND EAST
15.0 FT AND 20.0 FT (REN #244)

NO FENCE POST'S FROM REN #244 FD

CORNER S. 24+25 T30S R6W BEARS NORTH, 106.8 FT

259 T30-6 ✓
325 T30-5 ✓

C.S. File No. 6439 (10)
C

RENEWAL

Monument Set (Procedure and Description)

PLUMB POSITION OF I.P. IS REFERENCED
AND A 2 3/8" DIA. BRASS CAP ON A
1 3/8" O.D. X 32" LONG IRON PIPE
IS SET AT REFERENCED POSITION.
BC/IP IS SET 2" BELOW GROUND.

Monument Detail

DOUGLAS COUNTY SURVEYORS

T 30 S

R S 25 | 519 R
6 530 5
W W

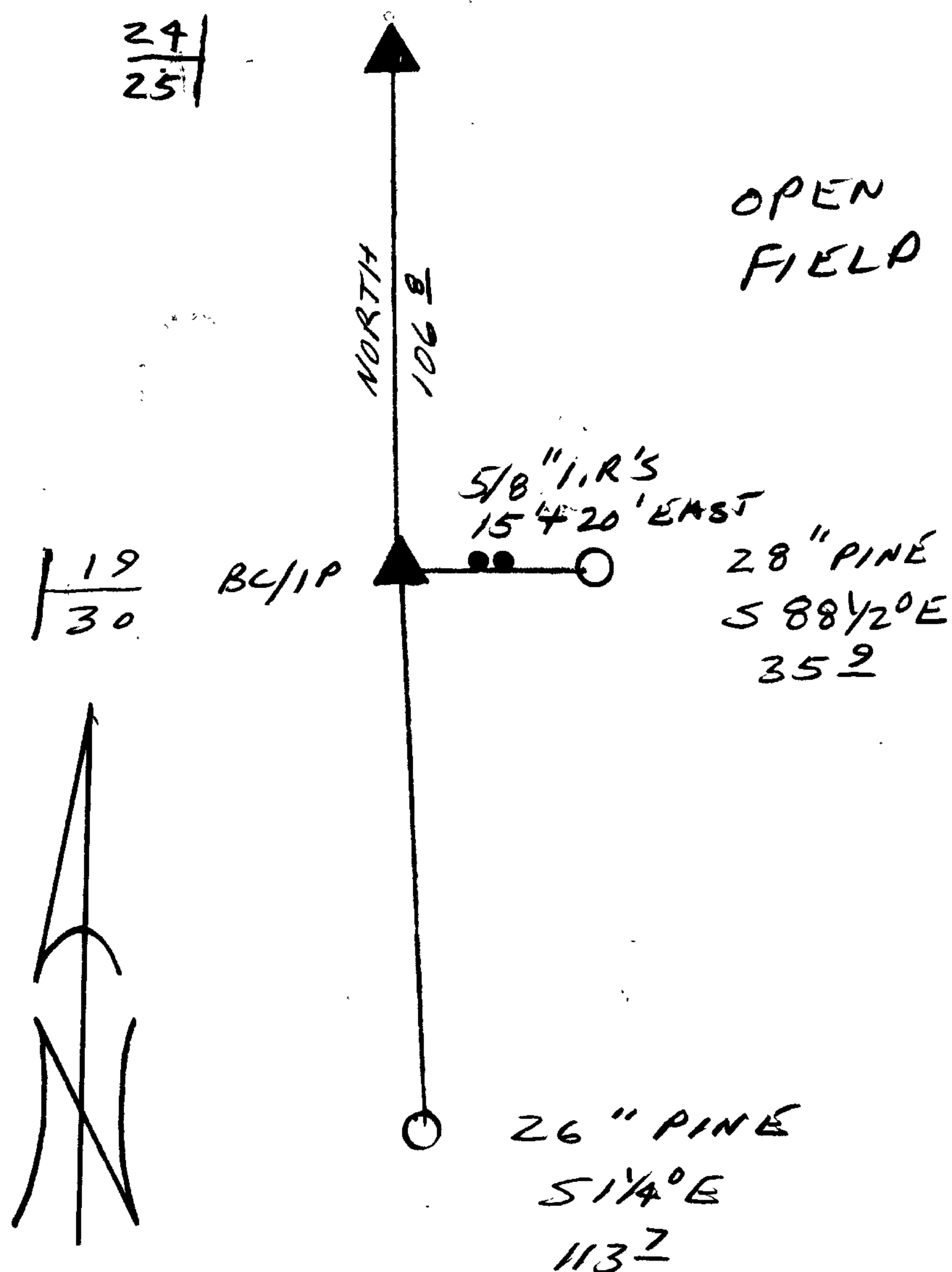
1993
OFFICE

New Accessories

28" DIA PINE DOUBLE BLAZED AND SCRIBED "T30S R5W
S 30 CS BT" BEARS S 88 1/2° E, 35.9 FT.

26" DIA PINE DOUBLE BLAZED AND SCRIBED "T30S R5W
S 30 CS BT" BEARS S 14° E, 113.7 FT.

Sketch of Monument, Accessories, and General Area



Location & Comments

Comp. Declin. 18° E
Agency DCSO
Party Chief RANDALL W. SMITH
Notekeeper *[Signature]*
Witnesses STEPHEN J. FLAUSE

Address

Surveyor's Seal

REGISTERED
PROFESSIONAL
LAND SURVEYOR

Randall W. Smith
EXPIRES 12-31-94

OREGON
JULY 25, 1990
RANDALL W. SMITH
2469