

GOVERNMENT CORNER RESTORATION FORM

FILED 1160

Township 28S Range 7W Sec. 22 County DOUGLAS

State OR Date 1-7-93 No. _____

FEB 1 1993

Corner Designation

COUNTY SURVEYOR
DOUGLAS COUNTY, OR

$\frac{1}{4}$ $\frac{S22}{S27}$

- Condition Report Only
- Not Found
- Renewed
- Unrecorded
- Surveyed In
- Referenced Out

Previous Renewals #209, #226

MONUMENT DETAIL

Monument(s) Found: (Condition and Source)

A 1 1/4" O.D. X 36" LONG
IRON PIPE, BRASS CAP LAYING
ON GROUND. IRON PIPE IS
BENT. (REN #209, #226)

COUNTY SURVEYORS OFFICE

T28S

$\frac{1}{4}$ $\frac{S22}{S27}$

R7W

1969 1975

Accessories Found:

6" NOW 14" DIA. W. OAK WITH A FULLY HEALED DOUBLE
BLAZE, BEARS S51 1/2°E, 36.7 FT (REC S49°E 36.7)
REN #209

12" NOW 31" DIA. 18" HIGH PINE STUMP, POSSIBLE
LOWER BLAZE, NO SCRIBING FOUND. BEARS N43 1/4°W,
66.3 FT (REC N42°W, 66.3 FT REN #209) REN #209

#215x

RENEWAL

Monument Set (Procedure and Description)

A 1 1/2" OD. X 32" LONG IRON PIPE WITH BRASS CAP IS SET AT REFERENCED PLUMB POSITION OF FLANGES TO FOUND IRON PIPE. BC/IP SET FLUSH WITH GROUND. BRASS CAP FROM REN#209 AND 226 PLACED ALONG EAST EDGE OF NEW BC/IP AT BOTTOM OF HOLE.

Monument Detail

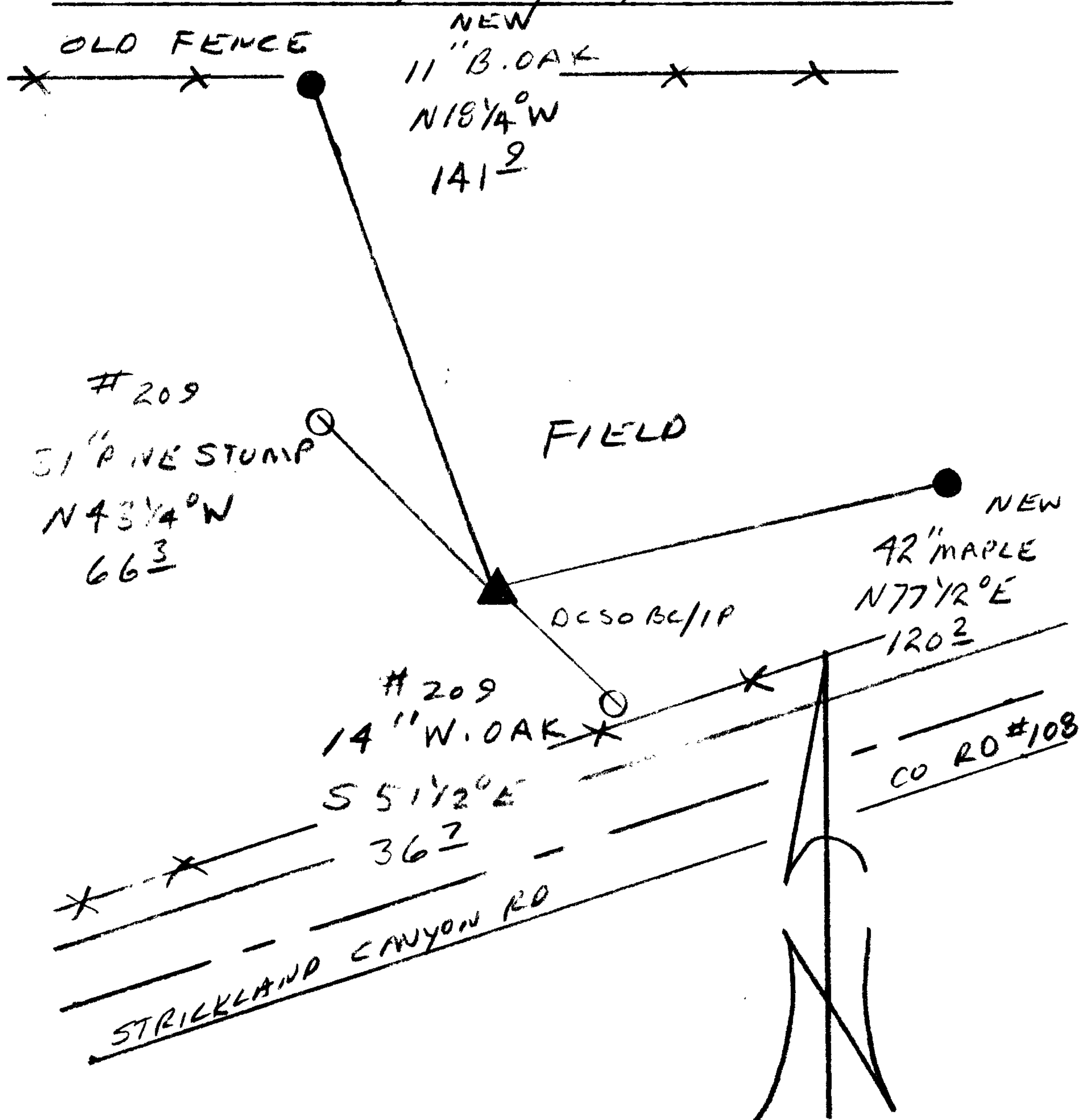
DOUGLAS COUNTY SURVEYORS
T285
1/4 S 22 R
7
S 27 W
1993
OFFICE

New Accessories

42" DIA MAPLE DOUBLE BLAZED AND SCRIBED, " 1/4 S 22 CS BT " BEARS N 77 1/2° E, 120.2 FT.

11" DIA. MULTI TRUNK B.OAK DOUBLE BLAZED AND SCRIBED " 1/4 S 22 CS BT " ON MOST SOUTHERLY TRUNK, BEARS N 18 1/4° W, 141.9 FT TO CENTER OF ROOT CROWN.

Sketch of Monument, Accessories, and General Area



Location & Comments

CORNER LIES IN A FIELD APPROX. 70 FT NORTHERLY OF CO. RD #108 (STRICKLAND CANYON RD) AND 100 FT WEST OF MILE POST 6.

Comp. Declin. 18° E
Agency DCSO
Party Chief RANDALL W SMITH
Notekeeper Randall W Smith
Witnesses STEPHEN J FLAUSE

Address

Surveyor's Seal
PROFESSIONAL
LAND SURVEYOR
Randall W Smith
OREGON
RANDALL W SMITH
EXPIRES 12-31-94