

GOVERNMENT CORNER RESTORATION FORM

Township 23S Range 5W Sec. 10 County DOUGLAS

State OR Date 1-5-93 No. _____

Corner Designation

1/4 S10 | S11

- Condition Report Only
- Not Found
- Renewed
- Unrecorded
- Surveyed In
- Referenced Out

Previous Renewals #65

MONUMENT DETAIL

Monument(s) Found: (Condition and Source)

FLANGES OF I.P. 18" BELOW
GROUND. I.P AND BRASS CAP FOUND
BY COUNTY ENGINEERING OUT OF
GROUND NEAR CORNER. REN #65

FILED JP

N/A

JAN 14 1993

COUNTY SURVEYOR
DOUGLAS COUNTY, ORE.

Accessories Found:

- 10" NOW 20" DIA. 2' HIGH ROTTED OAK STUMP WITH A
SCRIBE MARK VISIBLE "S" BEARS N 22° W, 448.4 FT
(REC N 22° W, 447.5 FT, DIST POSSIBLE FACE MEASUREMENT) ORIG. BT
- 20" NOW 38" DIA 3' HIGH ROTTED OAK STUMP WE OPENED
NO SCRIBING FOUND BEARS N 1° E 448.3 FT
(REC N 1 1/2° E, 450.8 FT) ORIG. BT STUMP IS TILTED TOWARDS
CORNER.
- 6" NOW 20" DIA 1' HIGH ROTTED D. FIR STUMP WE OPENED
LOWER BLAZE, SCRIBE MARK FOUND "T" BEARS S 11° W,
198.4 FT AGREES WITH REC. REN #65
- 20" NOW 26" DIA 1' HIGH ROTTED D. FIR STUMP NO BLAZES
OR SCRIBING VISIBLE, BEARS S 26 1/2° E, 111.0 FT, AGREES
WITH REC REN #65

X
#138 C

RENEWAL

Monument Set (Procedure and Description)

SET A 1 1/2" DIA BY 32" LONG IRON PIPE WITH BRASS CAP IN MIDDLE OF FOUND FLANGES. BC/IP PROTRUDES 2" ABOVE GROUND. FLANGES LEFT UNDER BC/IP.

Monument Detail

DOUGLAS COUNTY SURVEYORS

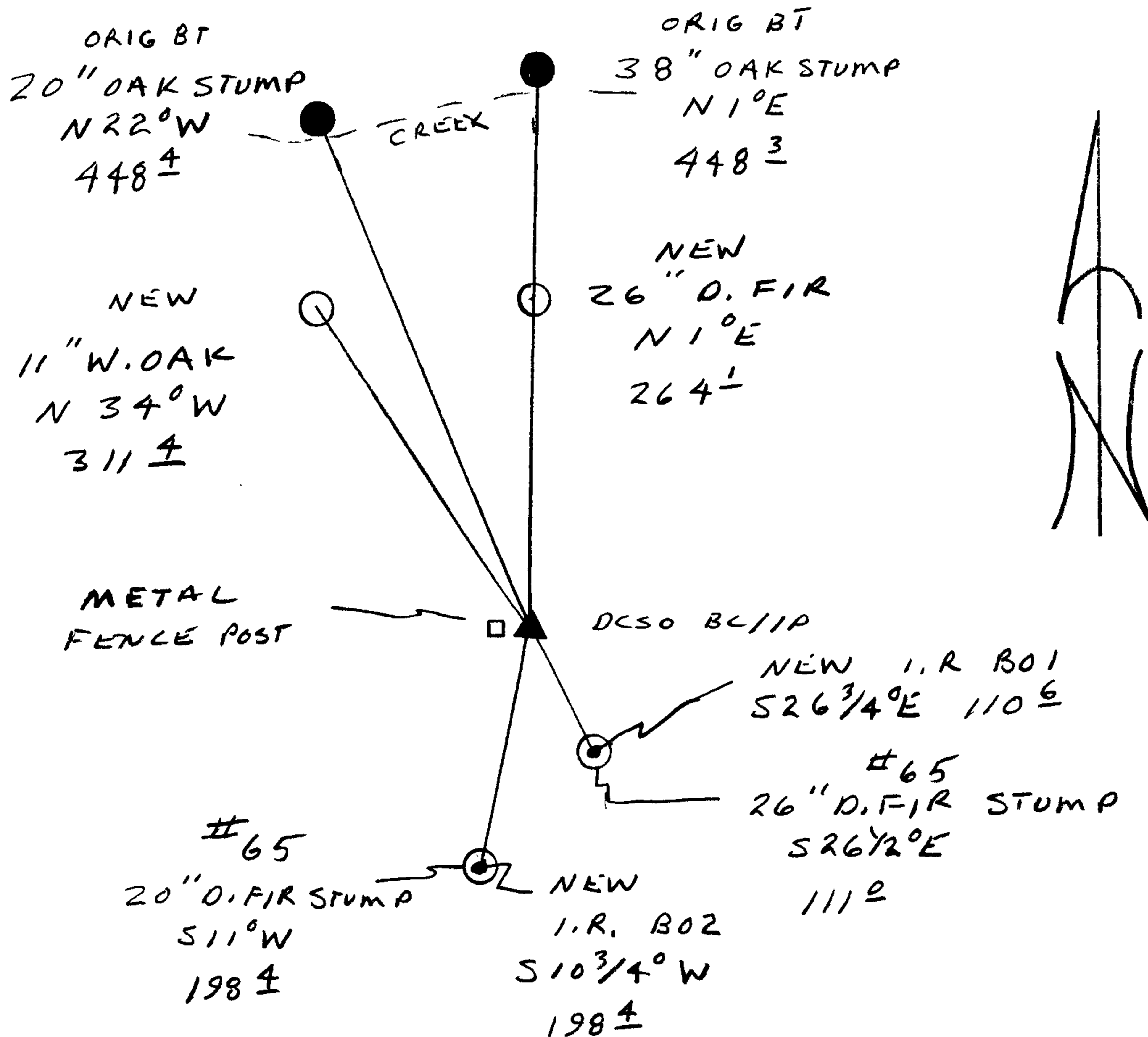
T 23 S
R
1/4 S10 | S11 5
W

1993
OFFICE

New Accessories

5/8" x 30" LONG IRON ROD WITH DCSO ALUM. CAP STAMPED "B01" IS SET NEAR CENTER OF BT STUMP FROM REN #65, I.R. BEARS S 26 3/4° E, 110.6 FT.
 5/8" x 30" LONG IRON ROD WITH DCSO ALUM. CAP STAMPED "B02" IS SET NEAR CENTER OF BT STUMP FROM REN #65, I.R. BEARS S 10 3/4° W, 198.4 FT
 26" DIA. D.FIR DOUBLE BLAZED AND SCRIBED "1/4 S11 CS BT" BEARS N 01° E, 264.1 FT
 11" DIA. W. OAK DOUBLE BLAZED AND SCRIBED "1/4 S10 CS BT" BEARS N 34° W, 311.4 FT

Sketch of Monument, Accessories, and General Area



Location & Comments

Comp. Declin. 18° E
 Agency DCSO
 Party Chief RANDALL W SMITH
 Notekeeper Randall W Smith
 Witnesses STEPHEN J FLAUSE

Address

Surveyor's Seal

Randall W Smith
 Surveyor
 No. 1112
 Expires 12-31-94