

Township 32 S Range 8 W Sec. 29 County DOUGLAS

State OREGON Date 10/21/92 No. _____

OCT 30 1992

Corner Designation

WITNESS TO S30 | S29 (ABEARING OBJECT)
S31 | S32

COUNTY SURVEYOR
DOUGLAS COUNTY, ORE.

- Condition Report Only
- Not Found
- Renewed
- Unrecorded
- Surveyed In
- Referred Out

Previous Renewals #90, #107

Monument(s) Found: (Condition and Source)

2 1/2" DIA DC50 BRASS CAP ON A
1 1/2" O.D. IRON PIPE PROTRUDING
8" ABOVE GROUND. (REN #107)

MONUMENT DETAIL

DOUGLAS CO. SURVEYOR
WITNESS CORNER

S30 | S29

S31 | S32

T32 S RBW

S37°E 89.3'

1976

Accessories Found:

UNMONUMENTED CORNER POSITION INSIDE, IS DETERMINED AT RECORD BRG. AND DIST.
(S37°E, 89.3') FROM REN #107 BCI/P. A CHECK OF BRG + DIST TO 3" DIA.
D. FIR BT FROM REN #90 IS MADE AND CHECKS WELL WITH RECORD
(S56 1/2°W, 69.2') IN REN #90. THE DIST. 62.9 FT IN REN #107 IS
PROBABLY A TRANSPOSED NUMBER PROBLEM. THE PROPER DISTANCE OF
69.2 FT APPEARS TO HAVE BEEN USED IN REN #107 CORNER RENEWING
FIELD WORK.

FROM DC50 BCI/P (WITNESS CORNER) REN #107

10" NOW 13" DIA. D. FIR WITH A FULLY HEALED DOUBLE
BLAZE, BEARS S 2°W, 15.4 FT (AGREES WITH REC).

11" CHINQUAPIN NOW ROOT HOLE, BEARS N 2°W, 41.0 FT
(AGREES WITH REC)

18" NOW 19" DIA. D. FIR WITH A FULLY HEALED DOUBLE
BLAZE, BEARS N 50°E, 7.3 FT (REC. N 53°E, 8.0 FT)
BT NOT PLACED IN REN #107, FOUND IN FIELD
NOTES OF CORNER RENEWAL S.S. 59/18.

#121 x

Monument Set (Procedure and Description)

Monument Detail

NONE

N/A

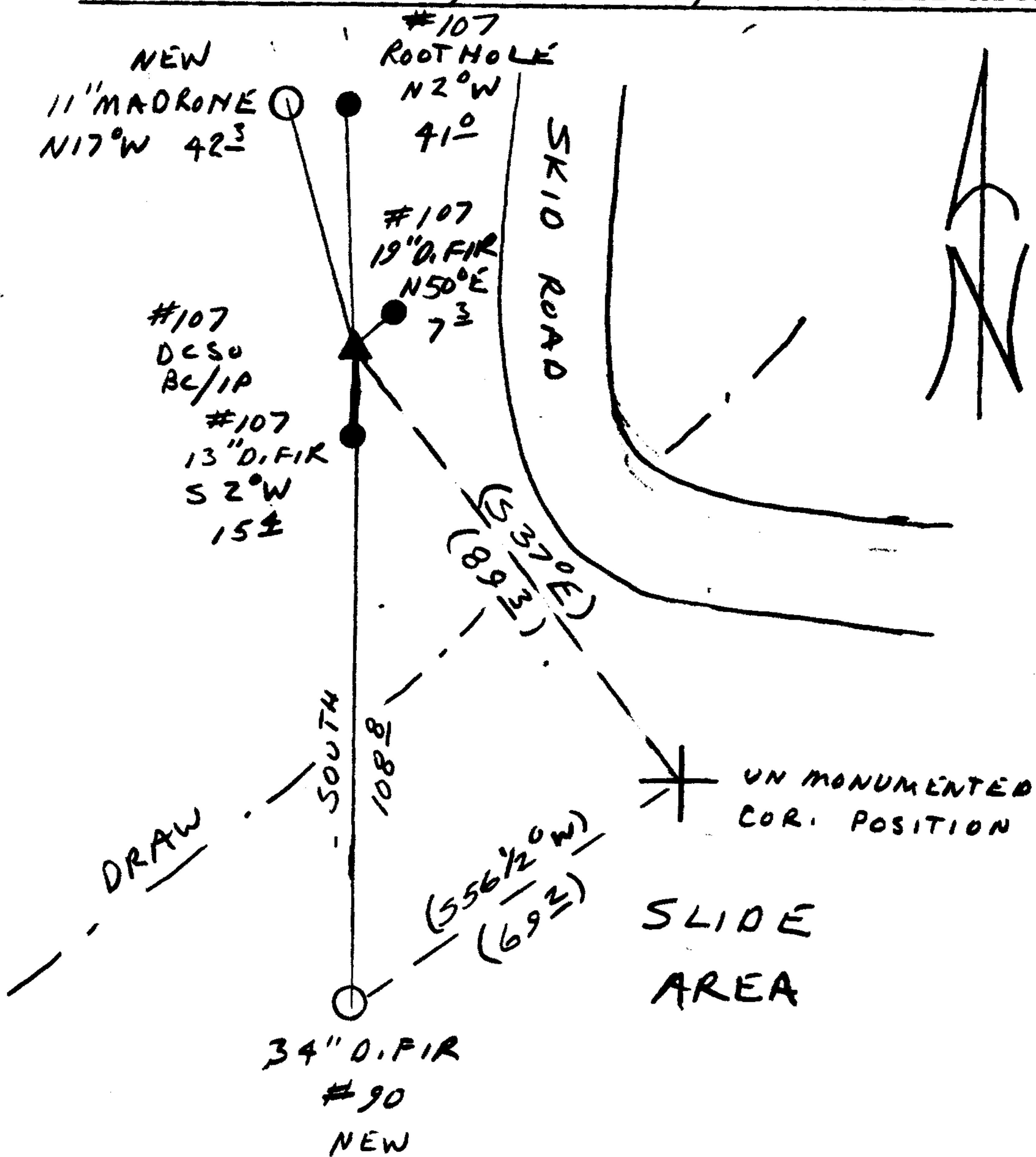
FROM 1976 OCSO BC/IP
New Accessories

34" DIA D. FIR WITH A FULLY HEALED DOUBLE BLAZE
FACING NORTHEAST, BT SCRIBED IN REN #90, BEARS
SOUTH, 108.8 FT.

11" DIA. MADRONE BARK SCRIBED "WC (T30) RBW S 30 CS BT"
BEARS N 17° W 42.3 FT

T325

Sketch of Monument, Accessories, and General Area



Location & Comments

Comp. Declin. 18° E
 Agency D C S G
 Party Chief RANDALL W SMITH
 Notekeeper Randall W Smith
 Witnesses STEPHEN J FLAUSK

Address

