

Township 32S Range 7W Sec. 19 County DOUGLAS

State OREGON Date OCT. 22, 1992 No. \_\_\_\_\_

OCT 30 1992

Corner Designation

$\frac{1}{4}$   $\frac{519}{530}$

COUNTY SURVEYOR  
DOUGLAS COUNTY, ORE.

- \_\_\_\_\_ Condition Report Only
- \_\_\_\_\_ Not Found
- Renewed
- \_\_\_\_\_ Unrecorded
- \_\_\_\_\_ Surveyed In
- \_\_\_\_\_ Referenced Out

Previous Renewals #121

MONUMENT DETAIL

Monument(s) Found: (Condition and Source)

FROM RENEWAL #121 A 5/8 INCH DIAMETER IRON ROD WITH A YELLOW PLASTIC CAP (MARKED AS AT RIGHT) IS FIRMLY SET AND PROTRUDES 8 INCHES ABOVE GROUND (IRON ROD IS FOUND TO BE 30 INCHES LONG WHEN REPLACED WITH BC MONUMENT).

HULL  
RS 901

Accessories Found:

RENEWAL #121 HAS PROPORTIONED IN THE CORNER POSITION. THE AREA OF THE CORNER POSITION WAS BURNED IN THE PAST, WHEN AREA IS SEARCHED NO EVIDENCE OF ORIGINAL BEARING TREES IS FOUND.

ALL BEARING TREES FROM RENEWAL #121 ARE FOUND. A 12" KNOB CONE PINE NOW A 14" INCH D.B.H. KNOB CONE PINE WITH A PARTIALLY HEALED PITCHED OVER DOUBLE BLAZE BEARS N79°E, 23<sup>4</sup>/<sub>10</sub> FEET DISTANT (RECORD N79°E, 23.40 FT.).

A 5" LIVE OAK NOW A 6" INCH D.B.H. LIVE OAK WITH ILLEGIBLE SCRIBING IN A PARTIALLY HEALED DOUBLE BLAZE BEARS S51°E, 26<sup>3</sup>/<sub>10</sub> FEET DISTANT (RECORD S50°E, 26.30 FT.).

A 5" LIVE OAK NOW A 5" INCH D.B.H. LIVE OAK WITH ILLEGIBLE SCRIBING VISIBLE IN A PARTIALLY HEALED DOUBLE BLAZE BEARS S65°W, 12.20 FT. (RECORD S65°W, 12.20 FT.).

AN 8" MADRONE NOW A 9" INCH D.B.H. MADRONE WITH A HEALED DOUBLE BLAZE BEARS N71°W, 12.6 FEET DISTANT (RECORD N71°W 12.20 FT.).

RECORD DISTANCES TO BEARING TREES AGREE WHEN MEASURED TO LARGE NAILS IN BEARING TREE TRUNKS BUT NOT WHEN MEASURED TO CENTER OF ROOT CROWN (AS PER MANUAL OF INSTRUCTIONS)

#122

Monument Set (Procedure and Description)

POSITION OF FOUND IRON ROD AND PLASTIC CAP IS REFERENCED OUT, THE MONUMENT IS REMOVED FROM THE GROUND AND REPLACED WITH A 2 3/8 INCH DIAMETER BRASS CAP (MARKED AS AT RIGHT) ON A 1 1/4 INCH O.D. 32 INCH LONG IRON PIPE.

NEW BRASS CAP MONUMENT IS FIRMLY SET AND PROTRUDES APPROXIMATELY 7 INCHES ABOVE GROUND. FOUND IRON ROD AND PLASTIC CAP MONUMENT IS RESET ON WEST EDGE OF B.C./I.P. MONUMENT AND PROTRUDES APPROXIMATELY 6 INCHES ABOVE GROUND.

DOUGLAS COUNTY SURVEYORS OFFICE

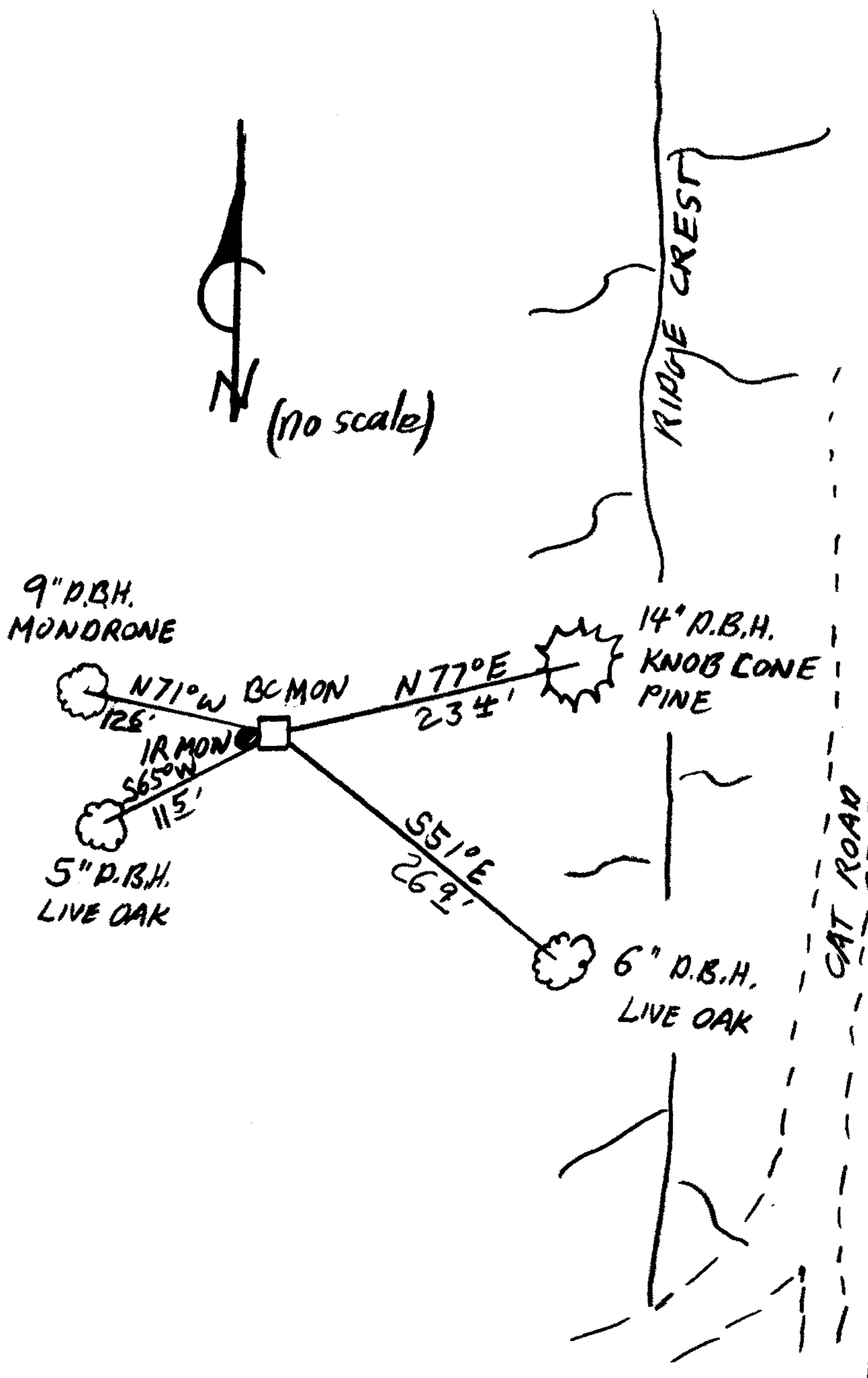
T325  
1/4 519 R  
530 W  
1992

New Accessories

NO NEW ACCESSORIES. BT TAGS CHANGED TO REFLECT DIFFERENCE IN MEASURED BEARINGS AND DISTANCES FROM RECORD.

Sketch of Monument, Accessories, and General Area

SKULL CREEK DRAINAGE



Location & Comments

MONUMENT IS 20 FEET LOWER THAN AND ON THE WESTERN SLOPE OF A HIGH NORTH-SOUTH RUNNING RUNNING RIDGE FORMING THE EAST SLOPE OF THE SKULL CREEK DRAINAGE.

Comp. Declin. 17 3/4° E  
Agency DCSD  
Party Chief R.W. SMITH  
Notekeeper Stephen John Thum  
Witnesses T.R. FRANSSSEN

Address

Surveyor's Seal  
REGISTERED PROFESSIONAL LAND SURVEYOR  
Randall W. Smith  
OREGON JULY 25, 1990  
RANDALL W. SMITH  
2469