

GOVERNMENT CORNER RESTORATION FORM

Township 29S Range 6W Sec. 9 County DOUGLAS

FILED  
jh

State OR Date 8/11/92 No. \_\_\_\_\_

SEP 8 1992

Corner Designation

S9 | S10  
---  
S16 | S15

COUNTY SURVEYOR  
DOUGLAS COUNTY, ORE.  
Condition Report Only

- Not Found
- Renewed
- Unrecorded
- Surveyed In
- Referenced Out

Previous Renewals # 218 1971 BLM

Monument(s) Found: (Condition and Source)

3/4" BLM BRASS CAP ON A 2 1/2"  
O.D. IRON PIPE PROTRUDES 8"  
ABOVE GROUND 1971 BLM

U.S. DEPT OF THE INTERIOR

3/4" I.R. PROTRUDES 10" ABOVE  
GROUND ALONG WEST EDGE OF  
BLM BC/IP. CSET BY RLS #934  
IN 1971) V.M. MCLIND #218

S9 | S10  
---  
S16 | S15

T29S R6W  
1971

BUR. OF LAND MANAGEMENT

Accessories Found:

REN # 218 BT'S  
13" NOW 15" DIA 3 FT HIGH SPLIT ALDER STUMP  
WITH A PARTIALLY HEALED DOUBLE BLAZE, SCRIBING VISIBLE "29S R6W S10"  
BEARS N 49° E, 158.4 FT (AGREES WITH REC)

24" NOW 29" DIA B. OAK WITH A FULLY HEALED DOUBLE BLAZE,  
BEARS S 41° E, 254.1 FT. (AGREES WITH REC)

27" NOW 40" DIA DOWN OAK WITH A PARTIALLY HEALED  
DOUBLE BLAZE, SCRIBING VISIBLE "T29S R6W S9" BEARS  
N 73° W, 755.6 FT (REC N 73° W, 158.4 FT POSSIBLE SLOPE  
MEASUREMENT).

#2754

U.S. FILE NO. 69/32-4

Monument Set (Procedure and Description)

Monument Detail

NONE

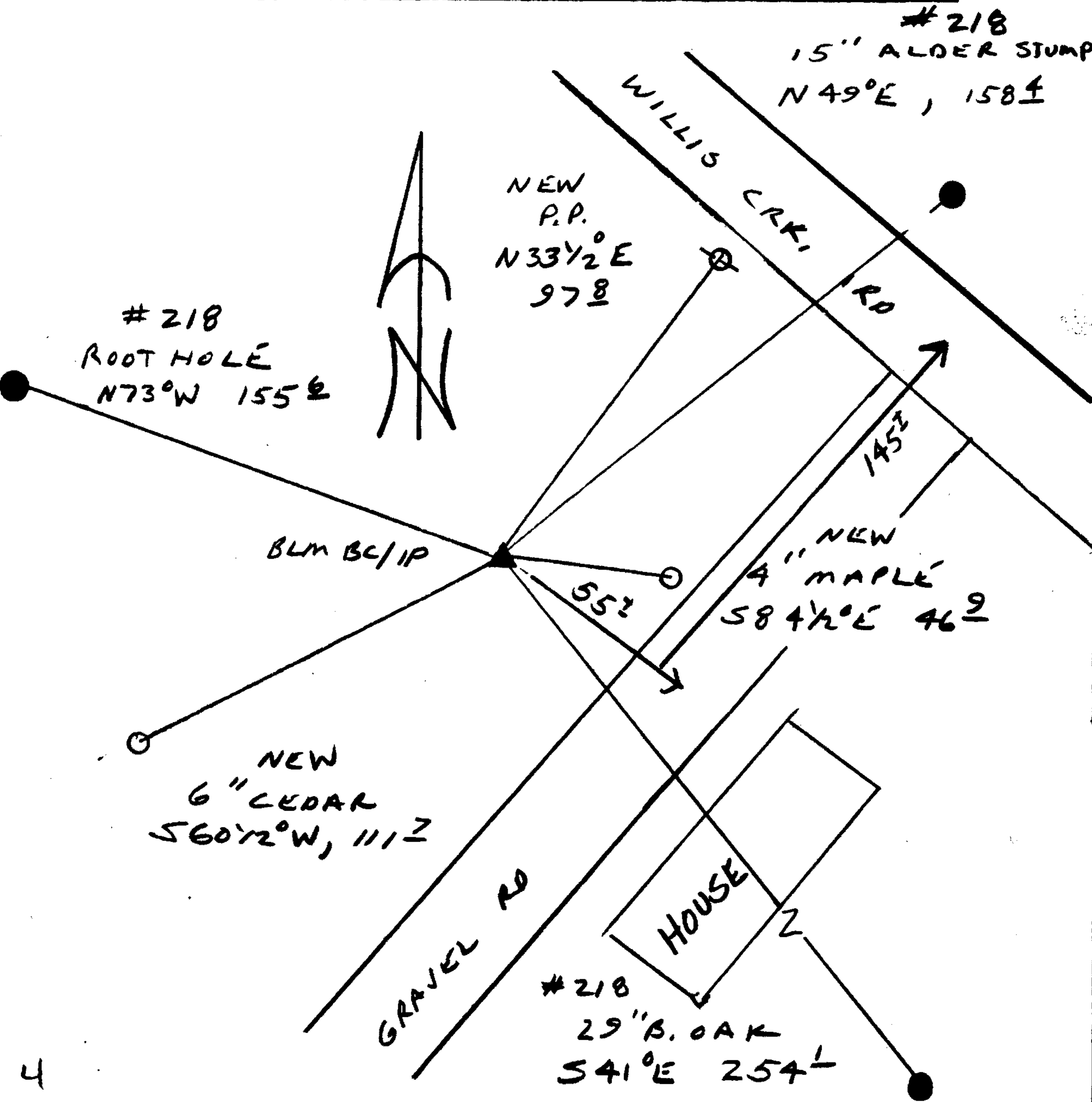
N/A

New Accessories

PPL POWER POLE WITH TAGS "PPL 40T", "PPL SW97", "PPL B7909"  
 BEARS N 33 1/2° E 97.8 FT  
 4" MAPLE DOUBLE BLAZED AND SCRIBED "X BT" BEARS S 84 1/2° E, 46.2 FT  
 6" CEDAR DOUBLE BLAZED AND SCRIBED "X BT" BEARS S 60 1/2° W, 111.7 FT

Sketch of Monument, Accessories, and General Area

Location & Comments



Comp. Declin. 173/4° E  
 Agency DCSO  
 Party Chief RANDALL W SMITH  
 Notekeeper Randall W Smith  
 Witnesses STEPHEN J FLAUSK

Address \_\_\_\_\_

Surveyor's Seal

REGISTERED  
 PROFESSIONAL  
 LAND SURVEYOR

*Randall W Smith*

OREGON  
 JULY 25, 1990  
 RANDALL W. SMITH  
 2489